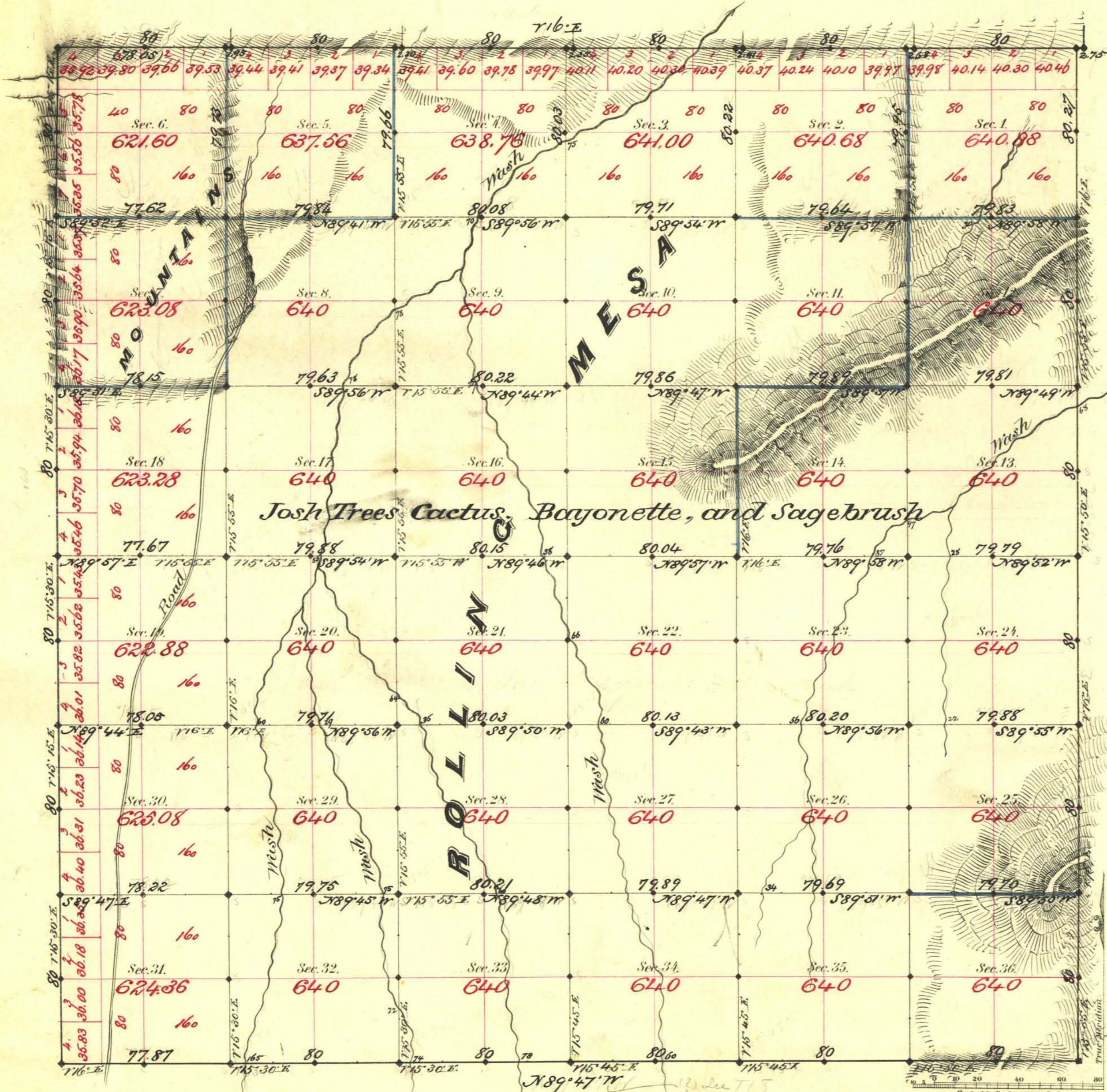


TOWNSHIP N^o 17 SOUTH RANGE N^o 56 EAST MOUNT DIABLO MERIDIAN



Aggregate Area of Public Land Surveyed 22,939.16 Ac.

Commenced July 25th 1881
Completed " 30th

Shades not noted run with Cor. of 15' 50" East

Surveys Designated	By Whom Surveyed	Date of Contract	Amount of Surveys	When Surveyed
N. Bdy.	Woodruff & Myrick	Jan. 20 th 1881	45 - 00 - 00	1881
"	"	Oct. 1 st 1869	6 - 00 - 00	1869
"	"	Feb. 7 th 1881	11 - 78 - 11	1881
"	"	"	46 - 72 - 61	July
"	"	"	12 - 74 - 01	"
"	"	"	11 - 59 - 00	"

109
19-31
145-114
"
"
"

The above Map of Township N^o 17 South of Range N^o 56 East
Mount Diablo Meridian is strictly conformable to the field
notes of the survey thereof on file in this Office, which have been examined and approved.
Surveyor General's Office, }
Virginia City Nev. }
October 14th 1881. }
C. L. Davis }
Sur. Gen. Nev.