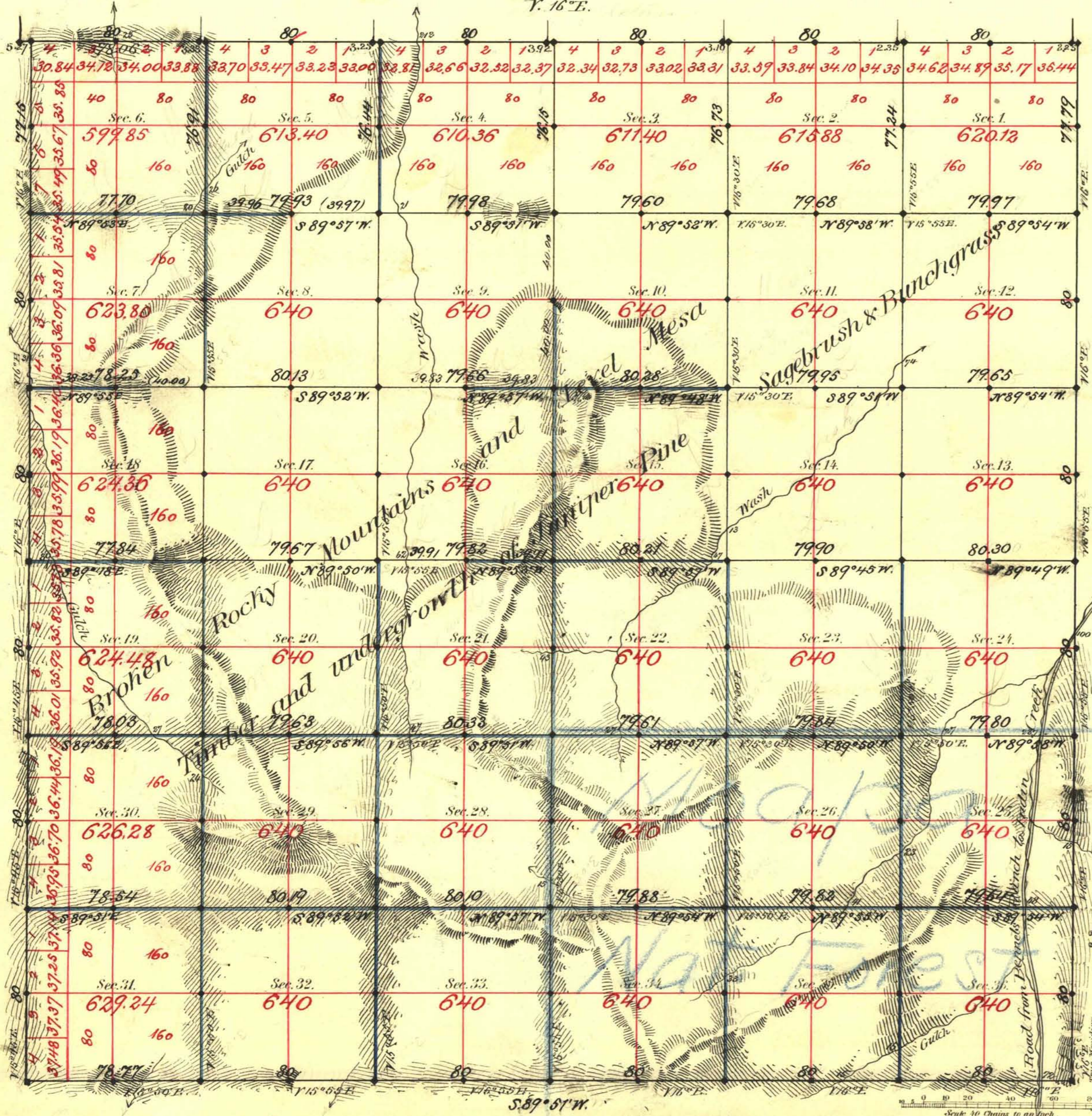


TOWNSHIP N^o 17 SOUTH RANGE N^o 54 EAST MOUNT DIABLO MERIDIAN

V. 16th E.



Aggregate Area of Public Lands Surveyed 22,798.17 Acres

Survey Commenced June 8th 1881
 " Completed " 14th "

Subdivisions not noted run with Var 16th East

Survey Designated	By Whom Surveyed	Date of Contract	Amount of Survey	When Surveyed
Tp. Lines	Theo. Birge	Feb'y 7 th 1881	23-73-91	1881
Subds. black 8 ⁰⁰	"	"	23-25-46	June "
" blue 10 ⁰⁰	"	"	34-22-94	" "
Conveyancy	"	"	15-45	" "

1144

The above Map of Township N^o 17 South of Range N^o 54 East Mount Diablo Meridian is strictly conformable to the field notes of the survey thereof on file in this Office, which have been examined and approved.

Surveyor General's Office,
 Virginia City Nevada
 October 14th 1881.

W. S. Davis, Sur. Genl.