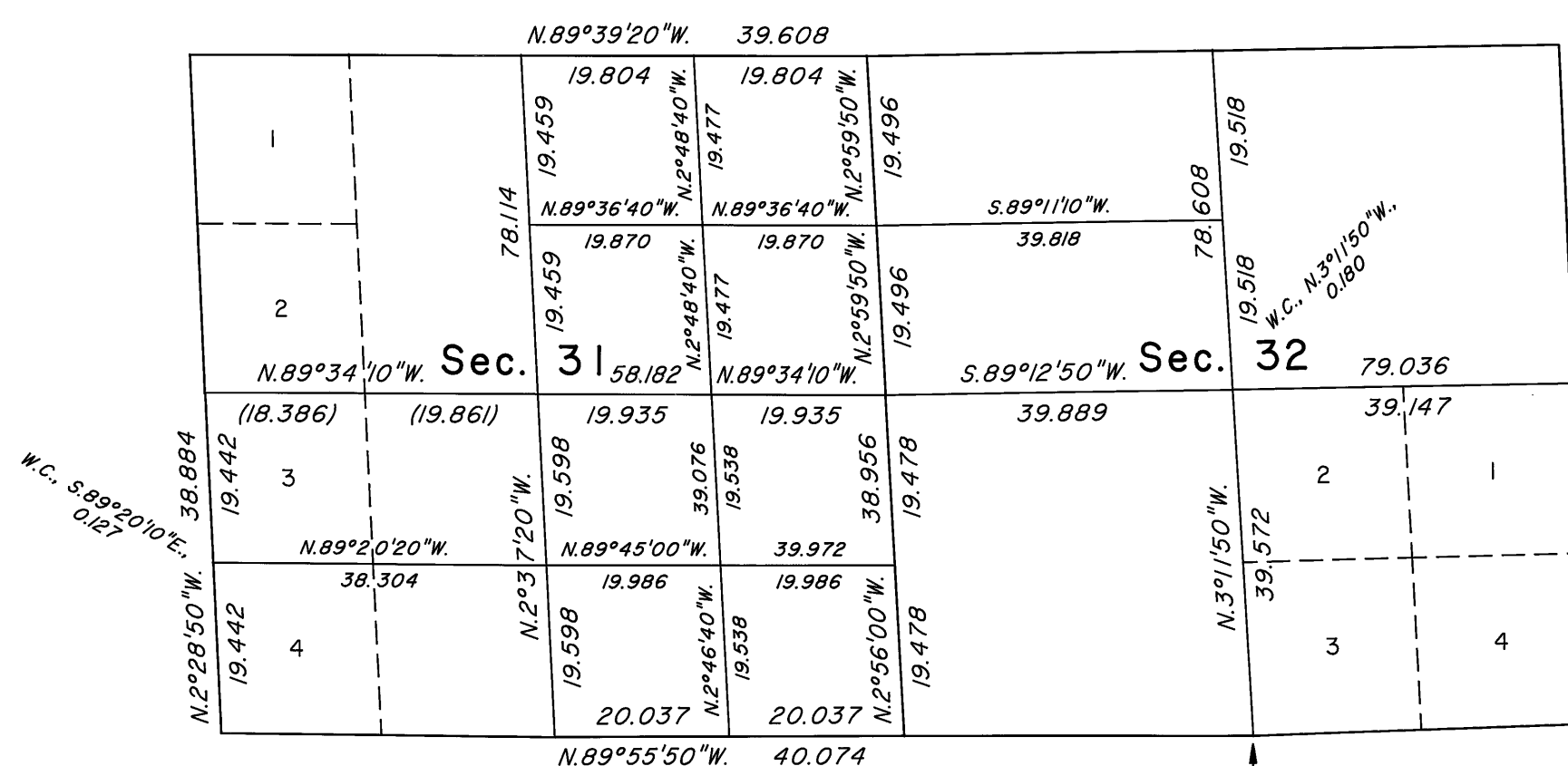
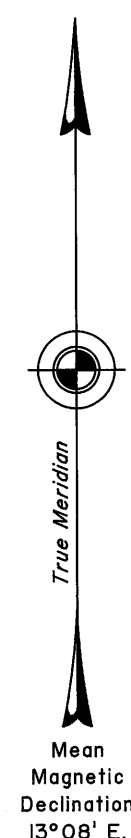


TOWNSHIP 17 SOUTH, RANGE 51 EAST, OF THE MOUNT DIABLO MERIDIAN, NEVADA
DEPENDENT RESURVEY AND SUBDIVISION

Resurveyed by

E. W. Sibley

in 1966



Latitude 36°25'27.683"N.
Longitude 116°15'25.113"W.
NAD 83

A history of surveys is contained in the field notes.

A dependent resurvey of portion of the west boundary was executed concurrently under T.17S., R.50E., of this same group.

This plat represents the dependent resurvey of a portion of the south boundary and a portion of the subdivisional lines designed to restore the corners in their true original locations according to the best available evidence, and the subdivision of sections 31 and 32, Township 17 South, Range 51 East, Mount Diablo Meridian, Nevada.

Except as indicated hereon, the lottings and areas are as shown on the plat approved February 18, 1882 and the plat accepted January 25, 1968.

For those surveyed lines not showing bearings and distances, refer to the official record of 1968.

Survey executed by Douglas A. Potts, Cadastral Surveyor, and Clay W. Morrow, Surveying Technician, beginning February 9, 2006, and completed July 26, 2007, pursuant to Special Instructions dated February 2, 2006, for Group No. 832, Nevada.

UNITED STATES DEPARTMENT OF THE INTERIOR
BUREAU OF LAND MANAGEMENT

Reno, Nevada August 2, 2007

This plat is strictly conformable to the approved field notes, and the survey, having been correctly executed in accordance with the requirements of law and the regulations of this Bureau, is hereby accepted.

For the Director

Chief Cadastral Surveyor, Nevada

