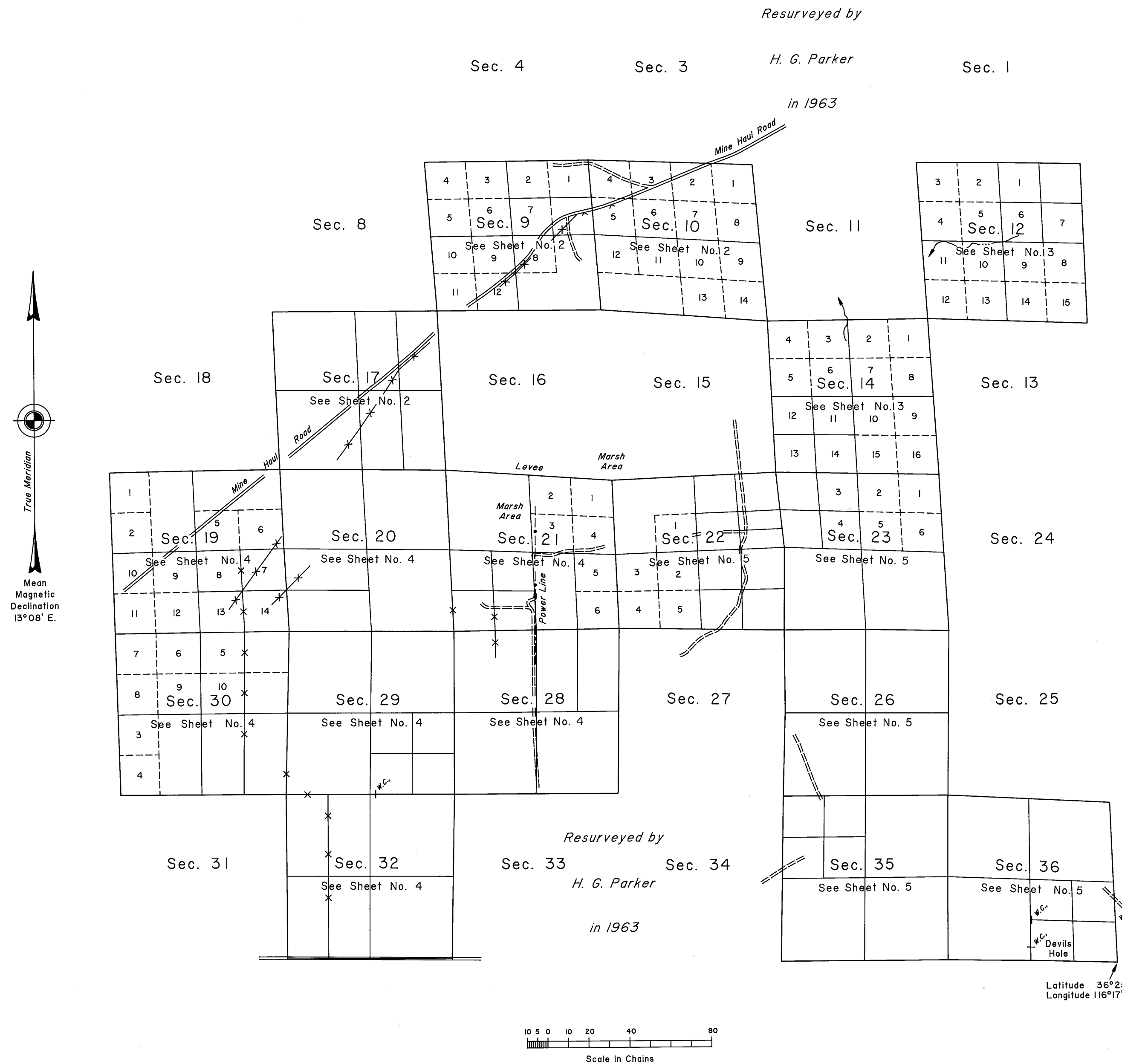


TOWNSHIP 17 SOUTH, RANGE 50 EAST, OF THE MOUNT DIABLO MERIDIAN, NEVADA

DEPENDENT RESURVEY AND SUBDIVISION

OFFICIALLY FILED
NEVADA STATE OFFICE
at 10:00 AM on August 7, 2007



A history of surveys is contained in the field notes.

This plat, in five sheets, represents the dependent re-survey of portions of the south and east boundaries and a portion of the subdivisional lines designed to restore the corners in their true original locations according to the best available evidence, and the subdivision of certain sections, Township 17 South, Range 50 East, Mount Diablo Meridian, Nevada.

Except as indicated hereon, the lottings and areas are as shown on the plat approved February 18, 1882 and the plat accepted August 25, 1965.

For those surveyed lines, on Sheets Nos. 2 through 5, not showing bearings and distances, refer to the official record of 1965.

Survey executed by Douglas A. Potts, Cadastral Surveyor, and Clay W. Morrow, Surveying Technician, beginning February 9, 2006, and completed July 26, 2007, pursuant to Special Instructions dated February 2, 2006, for Group No. 832, Nevada.

UNITED STATES DEPARTMENT OF THE INTERIOR
BUREAU OF LAND MANAGEMENT

Reno, Nevada August 2, 2007

This plat is strictly conformable to the approved field notes, and the survey, having been correctly executed in accordance with the requirements of law and the regulations of this Bureau, is hereby accepted.

For the Director

David A. Morrow

Chief Cadastral Surveyor, Nevada

T.17S., R.50E., M.D.M.