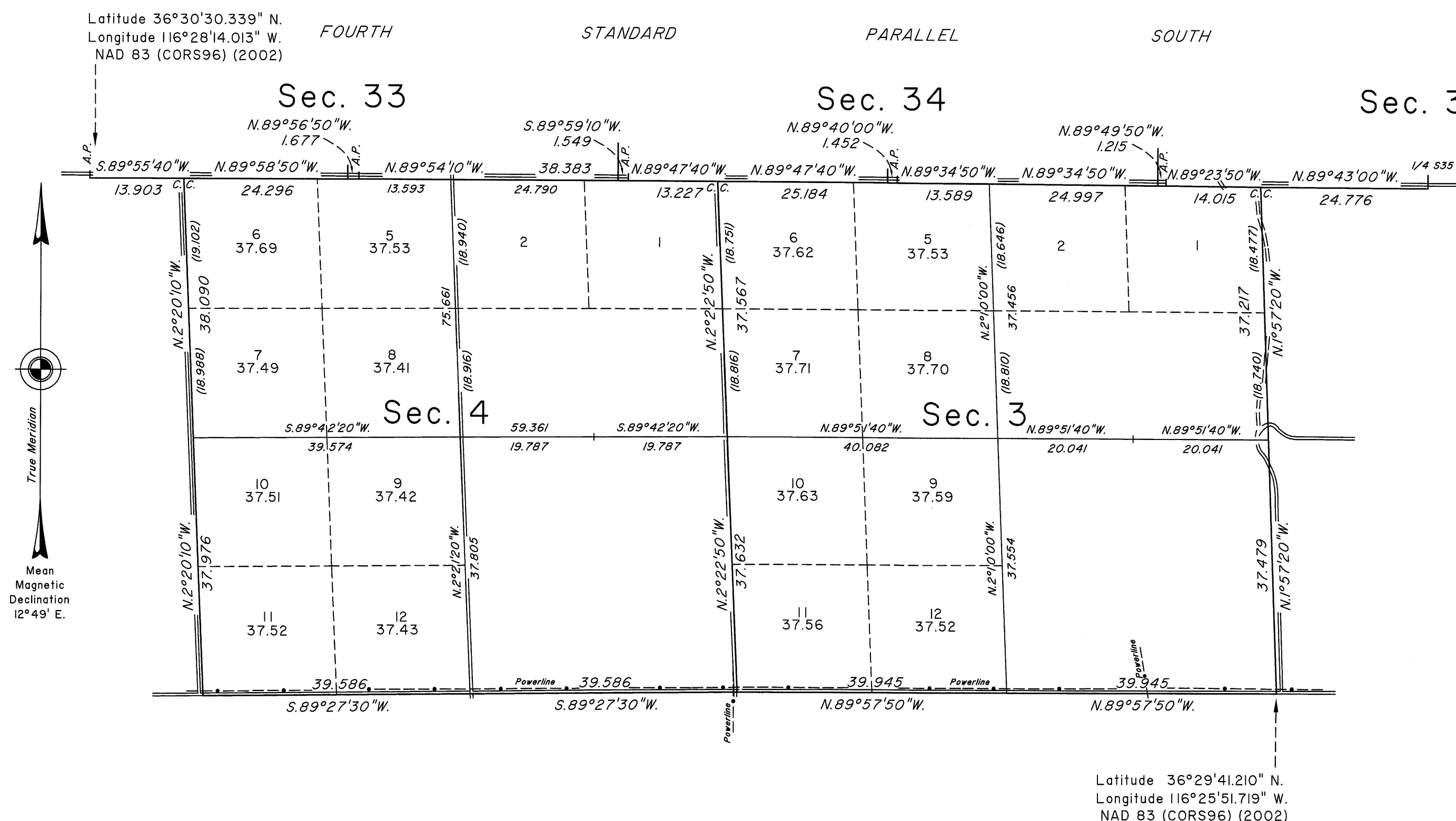


TOWNSHIP 17 SOUTH, RANGE 49 EAST, OF THE MOUNT DIABLO MERIDIAN, NEVADA

DEPENDENT RESURVEY AND SUBDIVISION



A history of surveys is contained in the field notes.

This plat represents the dependent resurvey of the Fourth Standard Parallel South, through a portion of Range 49 East and a portion of the subdivisional lines designed to restore the corners in their true original locations according to the best available evidence, and the subdivision of Sections 3 and 4, Township 17 South, Range 49 East, Mount Diablo Meridian, Nevada.

Except as indicated hereon, the lottings and areas are indicated on the plat approved May 4, 1882.

Survey executed by Joseph J. Johnson, Cadastral Surveyor, beginning June 25, 2010 and completed August 19, 2011, pursuant to Special Instructions for Group No. 900, Nevada, dated June 16, 2010.

UNITED STATES DEPARTMENT OF THE INTERIOR
BUREAU OF LAND MANAGEMENT

Reno, Nevada February 21, 2012

This plat is strictly conformable to the approved field notes, and the survey, having been correctly executed in accordance with the requirements of law and the regulations of this Bureau, is hereby accepted.

For the Director

David D. M. [Signature]

Chief Cadastral Surveyor for Nevada

TOTAL AREA OF FEDERAL INTEREST LAND RESURVEYED: 600.86 ACRES

