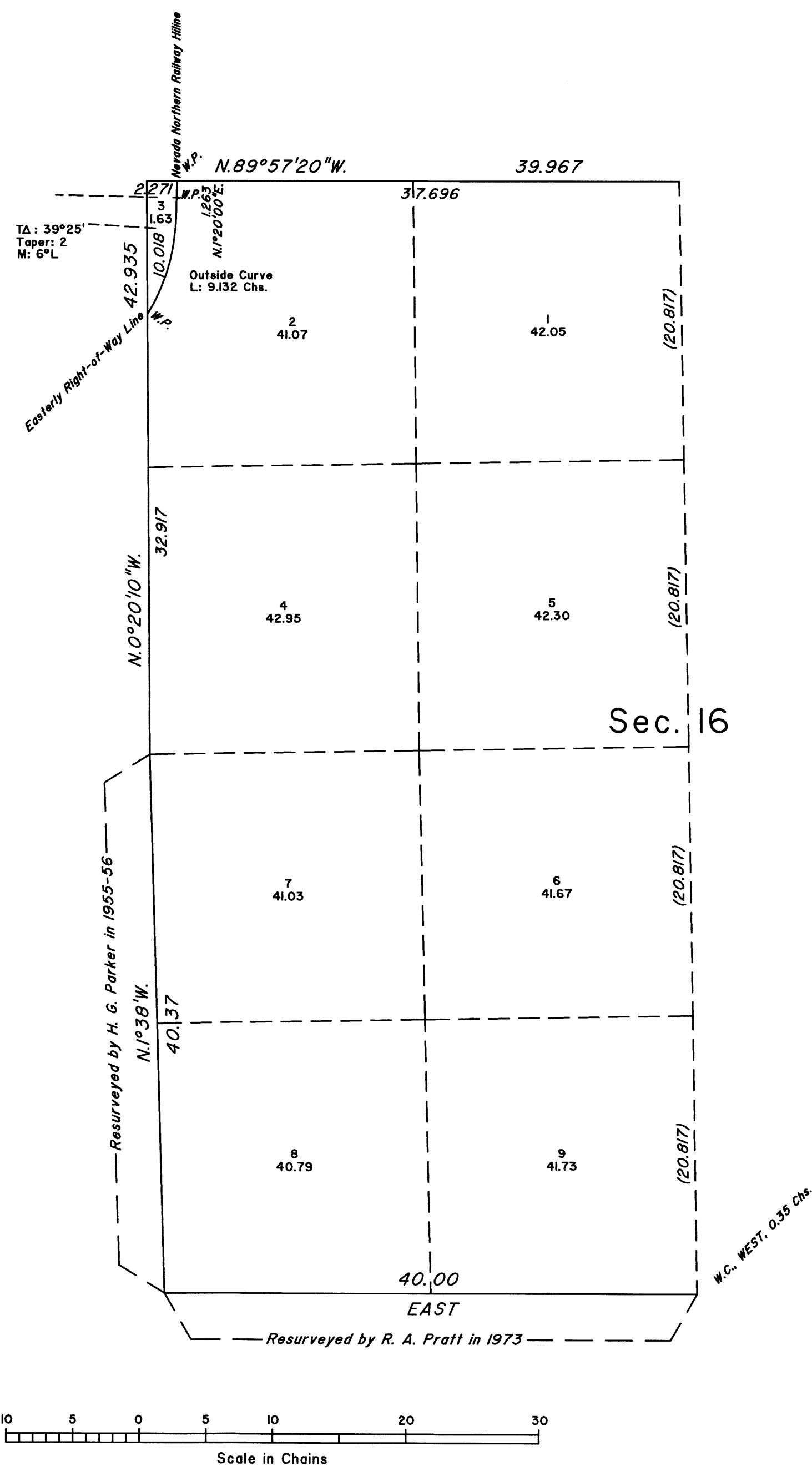


TOWNSHIP 17 NORTH, RANGE 64 EAST, OF THE MOUNT DIABLO MERIDIAN, NEVADA

ENLARGED DIAGRAM OF W 1/2 SECTION 16

OFFICIALLY FILED
NEVADA STATE OFFICE
at 10:00 AM on JAN 11 2018



Reference should be made to Sheet No. 1 for survey information.

UNITED STATES DEPARTMENT OF THE INTERIOR
BUREAU OF LAND MANAGEMENT

Reno, Nevada January 10, 2018

This plat is strictly conformable to the approved field notes, and the survey, having been correctly executed in accordance with the requirements of law and the regulations of this Bureau, is hereby accepted.

For the Director

Michael O. Hummer

Chief Cadastral Surveyor for Nevada

T.17N., R.64E., M.D.M.