

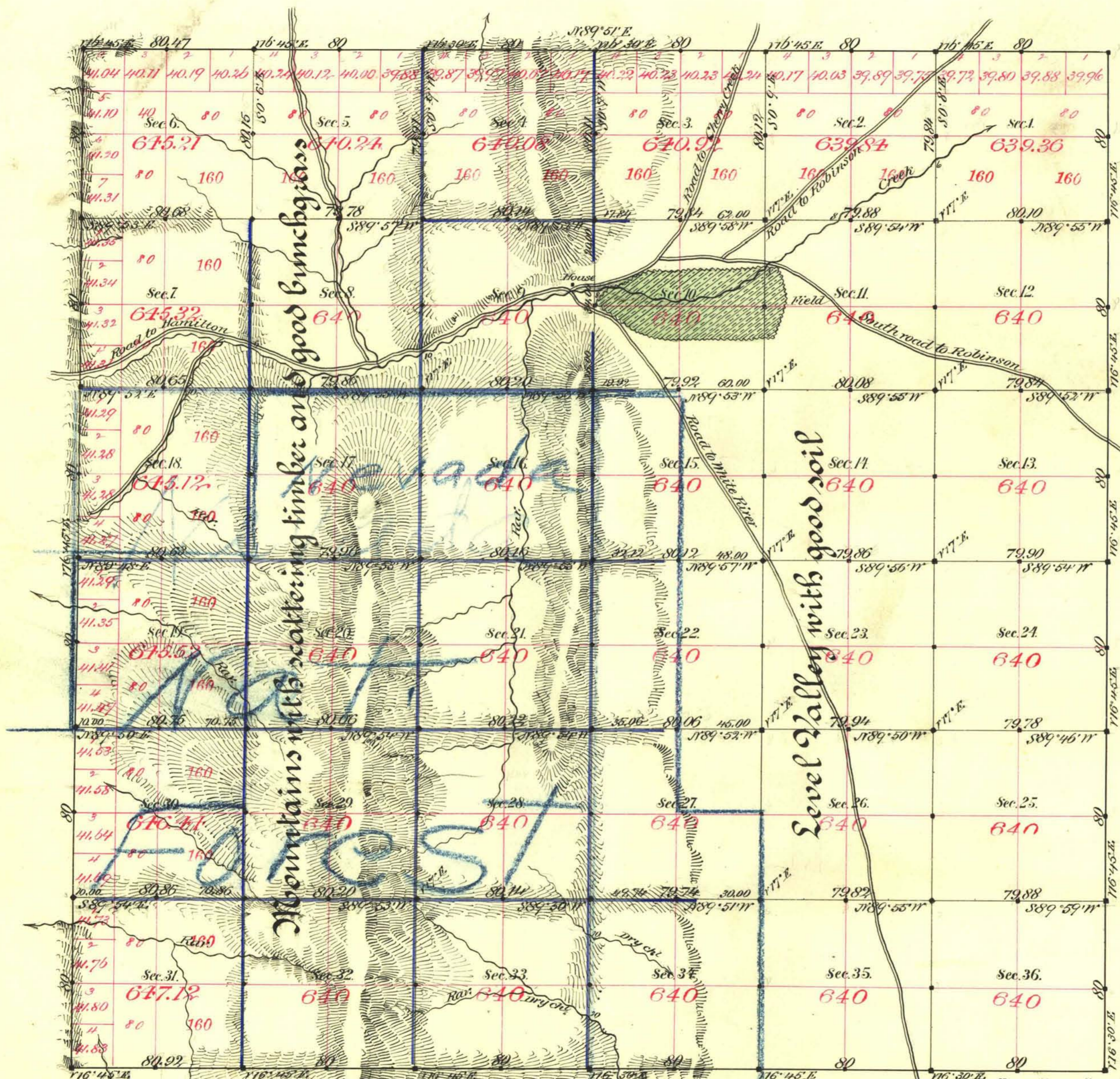
Survey by McClellan and Bridges rejected by Com. Gen.

Trans Office by Official Letter dated May 3^d 1888

Approved by Com. G. L. O. March 25th 1896

TOWNSHIP N^o 17 NORTH RANGE N^o 59 EAST

MOUNT DIABLO MERIDIAN



Aggregate Area of Public Land surveyed 23,075.17 Ac.

Commenced April 2nd 1885
Completed " 8th "

Variations not noted are 16' 45" East

Surveys Designated.	By Whom Surveyed.	Date of Contract.	Amount of Surveys.	When Surveyed.
Township lines	E. D. Moore	April 24 th 1869	24 - 27 - 32	1869
Subdivided black	McClellan & Bridges	Nov. 14 th 1884	28 - 58 - 66	April 1885
blue	"	"	31 - 24 - 53	"

The above Map of Township No. 17 North of Range No. 59 East Mount Diablo Meridian is strictly conformable to the field notes of the survey thereof on file in this Office, which have been examined and approved.

Surveyor General's Office, Reno, *C. C. Corning*
U.S. Surv. Gen'l of Nevada.
June 2nd 1885