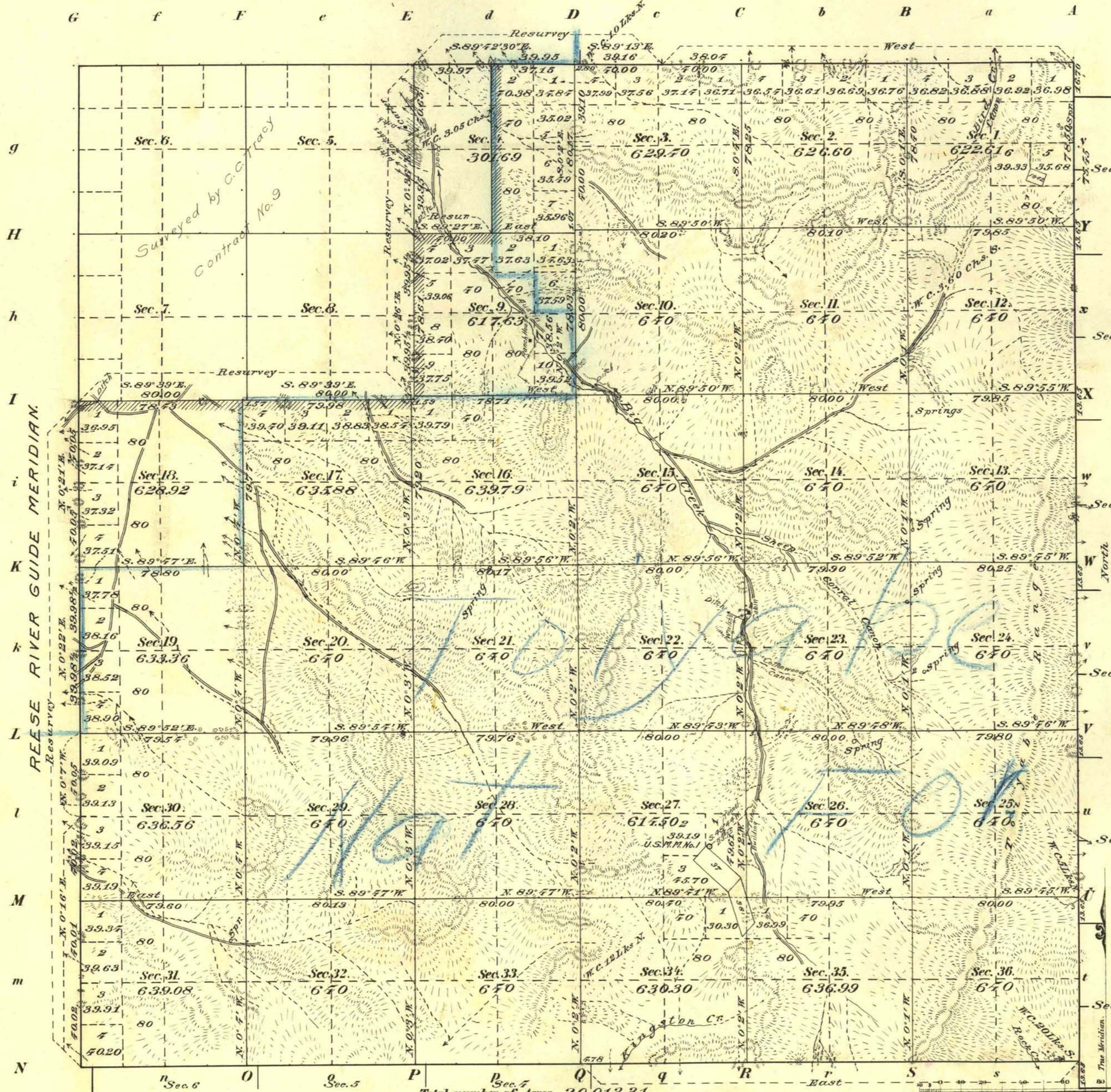


Township N<sup>o</sup> 17 N, Range N<sup>o</sup> 43 E. M<sup>t</sup> Diablo Meridian Nevada



Meanders of					
Posts	Courses	Ch: Lk <sup>s</sup>	Posts	Courses	Ch: Lk <sup>s</sup>
<b>BIG CREEK MINING DIST.</b>					
	No.	LODE			
	37	Beulah			
	38	Genesee Extension <sup>th</sup> , Beulah Mine			
<b>REESE RIVER M.D.</b>					
	No.	LODE			
	1942	Antimony Mill Site			
Note: Deputy reports mineral indications in Township.					
Latitude 39° 16' N					
Longitude 117° 6' W					
Mean Mag. Decl. 18° E					

Surveys Designated	By Whom Surveyed	No.	Contract Date	Amount of Surveys M. Ch. Lk.	When Surveyed
Township lines	Thurston & Kearney	259	Sept. 2, 1908	11-36-54	Mar. 4, 1909
Subdivisions	"	"	"	51-29-79	" 5-18, "
Resur. N. & W. Tp. lines	"	"	"	5-39-25	" 2-3, "
" Subdivisions	"	"	"	4-40-51	" 3 "
Connections Old Work	"	"	"	0-38-68	1867
"	C.C. Tracy Clinton Guinee	242	"	"	1905

The above Map of Township N<sup>o</sup> 17 N. of Range N<sup>o</sup> 43 E. Mt. Diablo Meridian, Nevada is strictly conformable to the field notes of the survey thereof on file in this office, which have been examined and approved.

Surveyor General's Office,  
Reno, Nevada, March 4, 1910.

*Matthew Lyle*  
Sur. Gen.

RWX