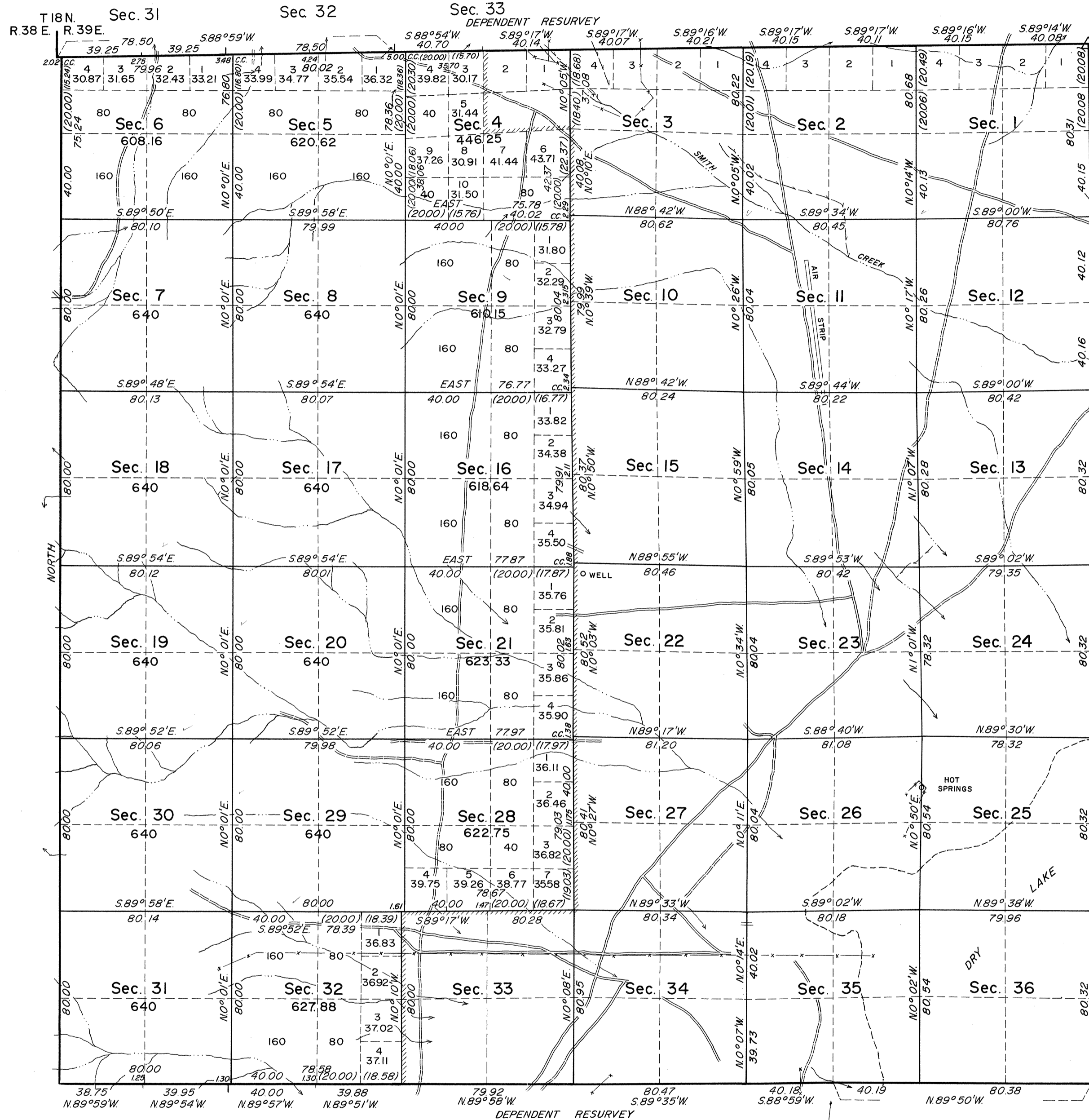


# TOWNSHIP 17 NORTH, RANGE 39 EAST, OF THE MOUNT DIABLO MERIDIAN, NEVADA

DEPENDENT RESURVEY AND COMPLETION SURVEY

OFFICIALLY FILED  
NEVADA LAND OFFICE  
10:00 A.M. APRIL 17, 1968

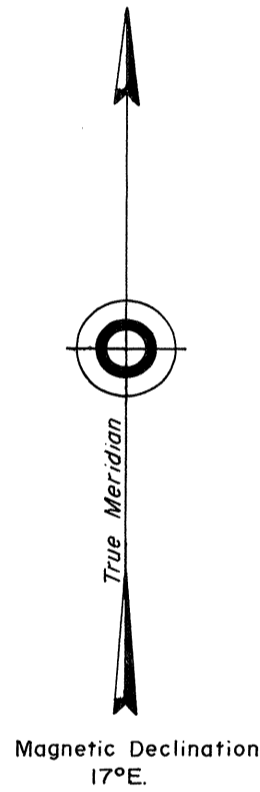


"CLAYTON"  
Nevada Planning Division  
Lat. 39°22'29.934"N  
Long. 117°31'54.351"W

History of the earlier surveys is contained in the field notes.

This plat represents a dependent resurvey of the north, south, and east boundaries, and a portion of the subdivisional lines, designed to restore the corners in their true original locations according to the best available evidence. It also represents the survey of the west boundary and the remaining portion of the subdivisional lines. Except as new or modified vacant subdivisions are shown hereon, the lottings and areas are as shown on the plat approved September 27, 1879.

Survey executed by Alburn D. Griffin, Cadastral Surveyor, on September 17, 1963, to April 13, 1965, under Special Instructions dated July 10, 1963, and Supplemental Special Instructions dated August 11, 1964, for Group No. 416, Nevada.



UNITED STATES DEPARTMENT OF THE INTERIOR  
BUREAU OF LAND MANAGEMENT  
Washington, D. C. May 12, 1966

This plat is strictly conformable to the approved field notes, and the survey, having been correctly executed in accordance with the requirements of law and the regulations of this Bureau, is hereby accepted.

For the Director

*R. B. Brown*

Acting Chief, Division of Engineering

Scale in Chains

0	5	10	20	40	80
---	---	----	----	----	----

Area Surveyed 10,537.78 Acres  
Area Resurveyed 12,327.20 Acres  
Total Area 22,864.98 Acres

BLM Tellurometer Station  
Lat. 39°17'15.908"N  
Long. 117°33'33.389"W

N. 89°38'E. 34/35  
320.95 312

80.32  
5.00  
16  
17

T. 17N., R. 39E.