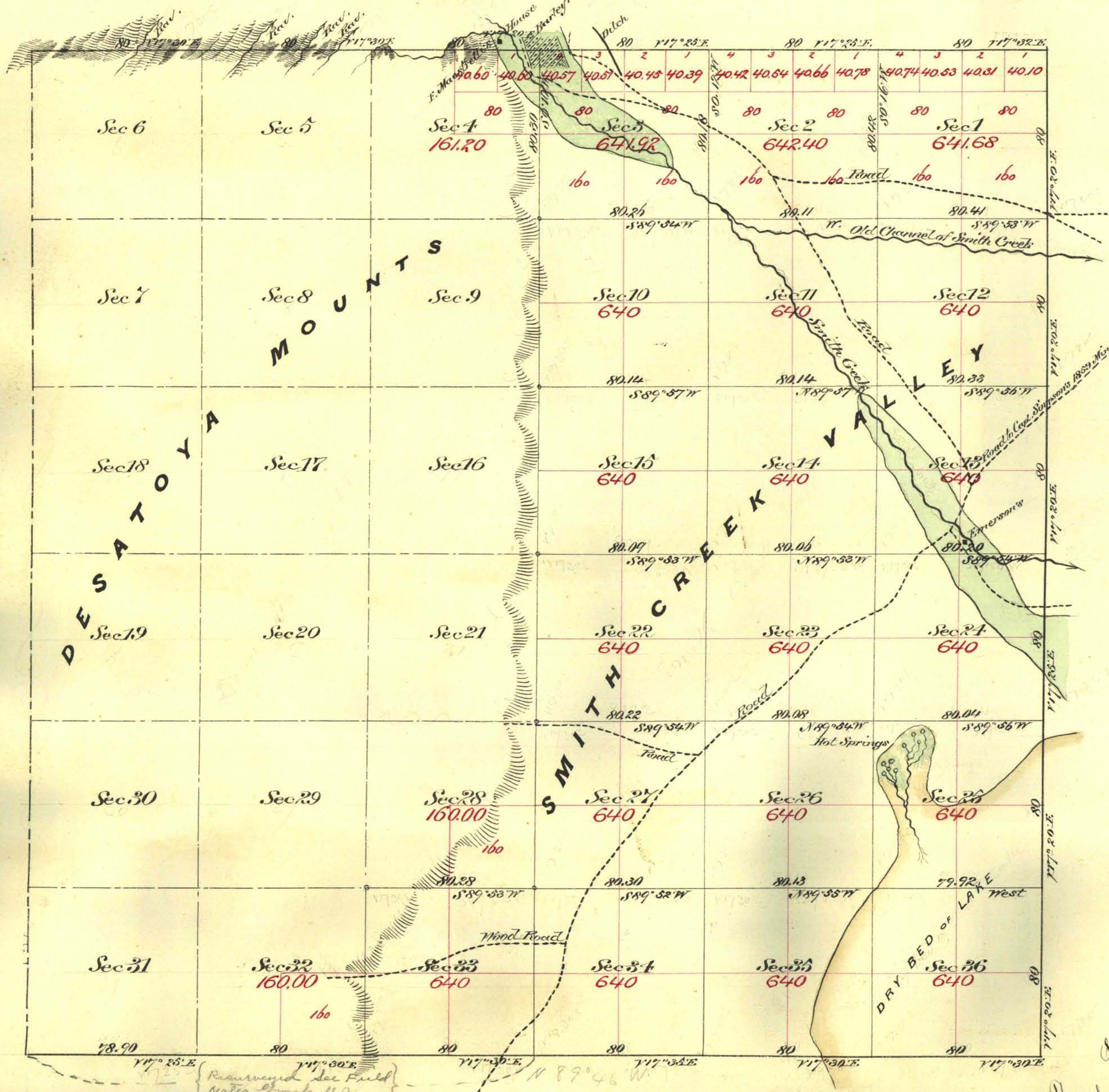


Township N<sup>o</sup> 17 North

Range N<sup>o</sup> 39 East

Mount Diablo Meridian



Aggregate Area of Public Land Surveyed 12,647.20 Ac.  
 Estimated " " Mountains Unsurveyed 10,374.80 "  
 Aggregate 23,022.00 "

Commenced August 18<sup>th</sup> 1879  
 Completed " 21<sup>st</sup> "

Subdivision lines not otherwise noted run with Variation 17° 30' East

Survey designated	By whom Surveyed	Date of Contact	Ant. of Survey	When Surveyed	Sec Con.
Township lines	Barker + Mc. Gillan	July 15 <sup>th</sup> 1879	17 - 28 - 30	August 1879	89
Subdivisions	" "	" "	35 - 03 - 61	" "	"

The above plat of Township N<sup>o</sup> 17 North & Range N<sup>o</sup> 39 East Mount Diablo Meridian is strictly conformable to the field notes of the survey thereof on file in this office which have been examined and approved  
 U. S. Surv. Genl. Office  
 Virginia City Nev.  
 September 29<sup>th</sup> 1879

L. S. Paris  
 U. S. Surv. Genl. Nev.