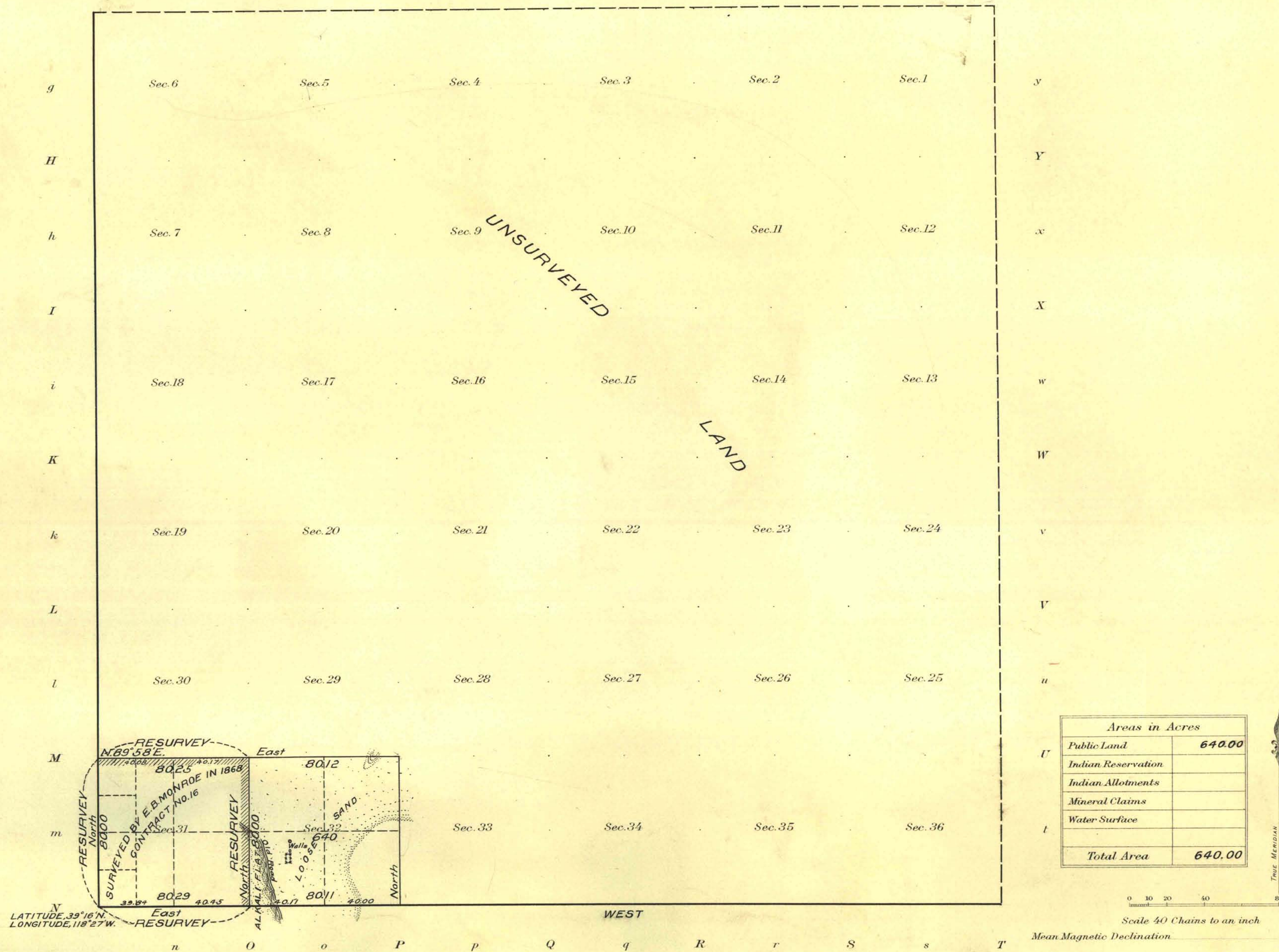


Survey Accepted March 20, 1918 - G.L.O.

<i>G</i>	<i>f</i>	<i>F</i>	<i>e</i>	<i>E</i>	<i>d</i>	<i>D</i>	<i>c</i>	<i>C</i>	<i>b</i>	<i>B</i>	<i>a</i>	<i>A</i>
----------	----------	----------	----------	----------	----------	----------	----------	----------	----------	----------	----------	----------

[illegible]

The above map of Township No. 17 North, Range No. 32 East of the Mt. Diablo Meridian Nevada is strictly conformable to the field notes of the survey thereof on file in this office, which have been examined and approved

U. S. Surveyor General's Office.

Feno, Nevada, Aug. 29, 1917

John B. Sullivan

John B. Sullivan
"Surveyor General."

T. 17 N. R. 32 E