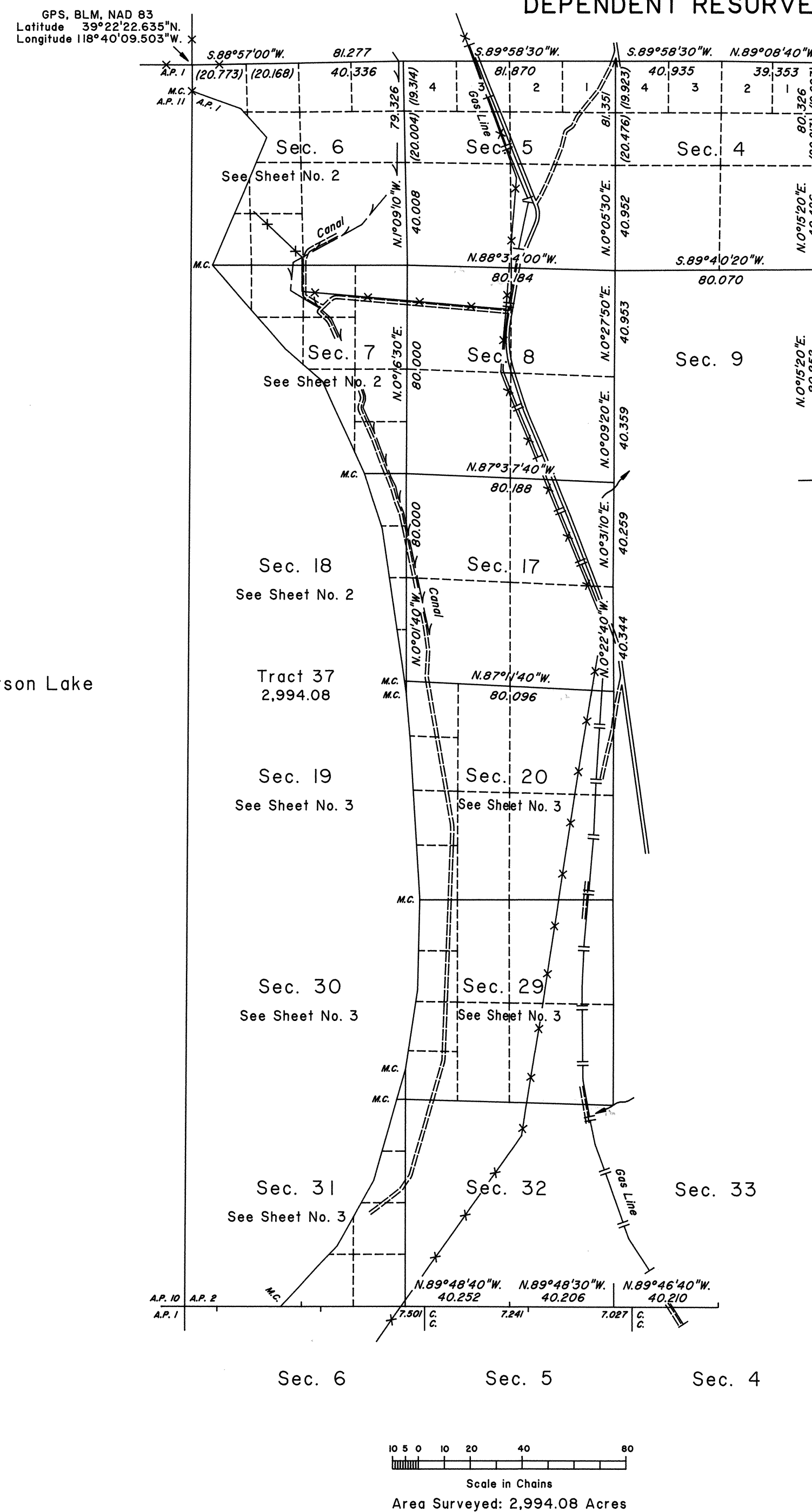


TOWNSHIP 17 NORTH, RANGE 30 EAST, OF THE MOUNT DIABLO MERIDIAN, NEVADA

DEPENDENT RESURVEY AND SURVEY



A history of surveys is contained in the field notes.

The survey of a portion of the subdivisional lines of T.16N., R.30E., and the completion survey of the east boundary of T.17N., R.29E., were executed concurrently under this same group.

This plat, in three sheets, represents the dependent resurvey of portions of the south, west and north boundaries, a portion of the subdivisional lines, and the meanders of Carson Lake designed to restore the corners in their true original locations according to the best available evidence, and the completion survey of the south boundary, and the survey of Tract 37, Township 17 North, Range 30 East, Mount Diablo Meridian, Nevada.

Except as indicated hereon, the lottings and areas are as shown on the plat approved March 26, 1881.

Survey executed by Brock R. Clifford and Thomas E. Casinger, Cadastral Surveyors, beginning May 31, 1996, and completed July 2, 1998, pursuant to Special Instructions dated June 10, 1996, and Supplemental Special Instructions dated April 30, 1998, for Group No. 763, Nevada.

For enlargement of fractional sections 6, 7 and 18, and a portion of Tract 37; and fractional sections 19, 20, 29, 30 and 31, and a portion of Tract 37, see Sheet No. 2 and Sheet No. 3, respectively.

UNITED STATES DEPARTMENT OF THE INTERIOR
BUREAU OF LAND MANAGEMENT

Reno, Nevada November 23, 1998

This plat is strictly conformable to the approved field notes, and the survey, having been correctly executed in accordance with the requirements of law and the regulations of this Bureau, is hereby accepted.

For the Director

David J. Clark

Chief Cadastral Surveyor, Nevada