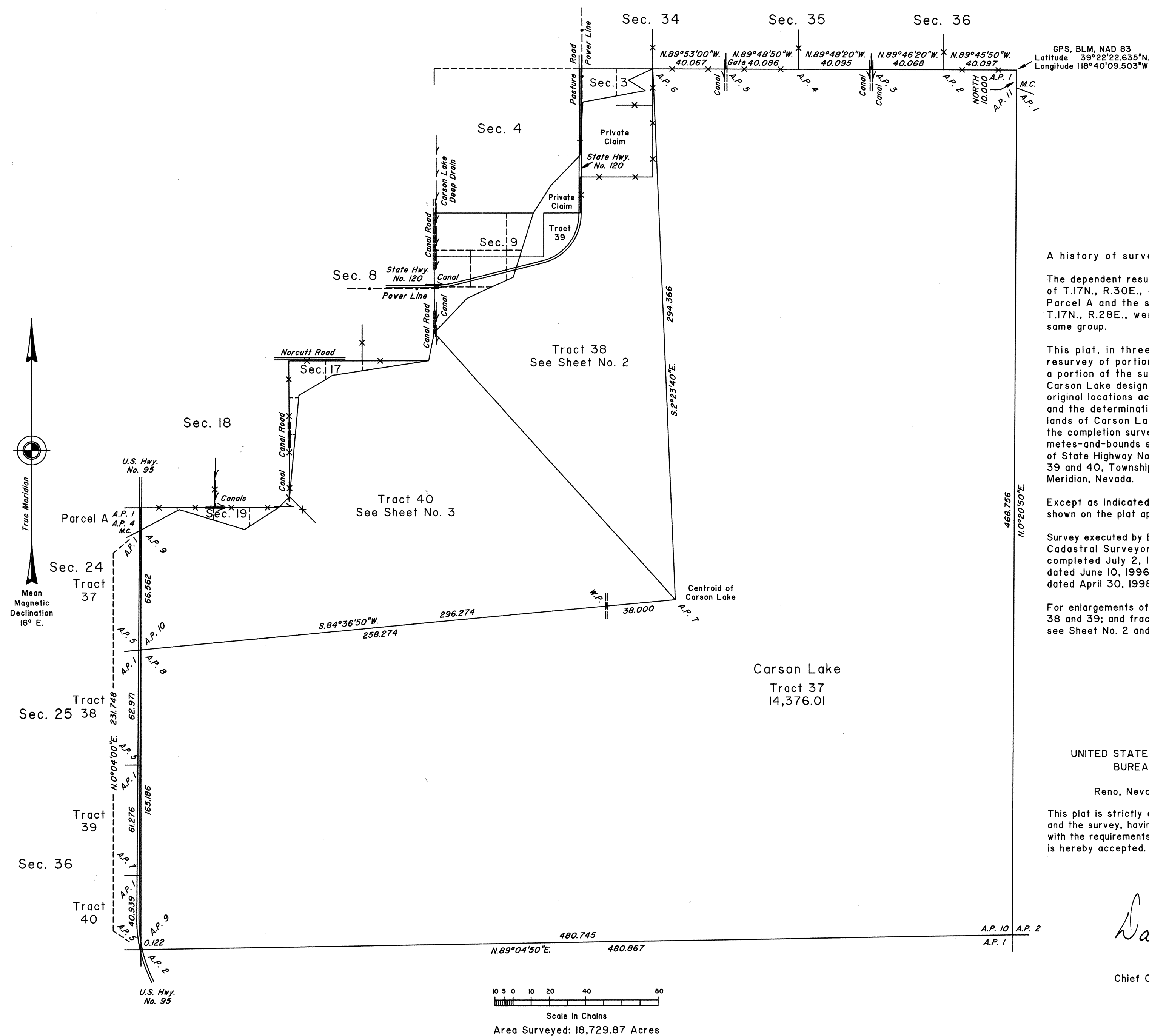


DEPENDENT RESURVEY AND SURVEY



A history of surveys is contained in the field notes.

The dependent resurvey of a portion of the west boundary of T.17N., R.30E., and the metes-and-bounds survey of Parcel A and the survey of Tracts 37, 38, 39 and 40, T.17N., R.28E., were executed concurrently under this same group.

This plat, in three sheets, represents the dependent resurvey of portions of the west and north boundaries, a portion of the subdivisional lines, and the meanders of Carson Lake designed to restore the corners in their true original locations according to the best available evidence, and the determination of the partition lines in the relicited lands of Carson Lake, the survey of the south boundary, the completion survey of the east and west boundaries, the metes-and-bounds surveys of a private claim and a portion of State Highway No. 120, and the survey of Tracts 37, 38, 39 and 40, Township 17 North, Range 29 East, Mount Diablo Meridian, Nevada.

Except as indicated hereon, the lottings and areas are as shown on the plat approved February 1, 1881.

Survey executed by Brock R. Clifford and Thomas E. Casinger, Cadastral Surveyors, beginning September 9, 1996, and completed July 2, 1998, pursuant to Special Instructions dated June 10, 1996, and Supplemental Special Instructions dated April 30, 1998, for Group No. 763, Nevada.

For enlargements of fractional sections 3 and 9, and Tracts 38 and 39; and fractional sections 17 and 19, and Tract 40, see Sheet No. 2 and Sheet No. 3, respectively.

UNITED STATES DEPARTMENT OF THE INTERIOR
BUREAU OF LAND MANAGEMENT

Reno, Nevada November 23, 1998

This plat is strictly conformable to the approved field notes, and the survey, having been correctly executed in accordance with the requirements of law and the regulations of this Bureau, is hereby accepted.

For the Director

David J. Clark

Chief Cadastral Surveyor, Nevada

T.17N., R.29E., M.D.M.