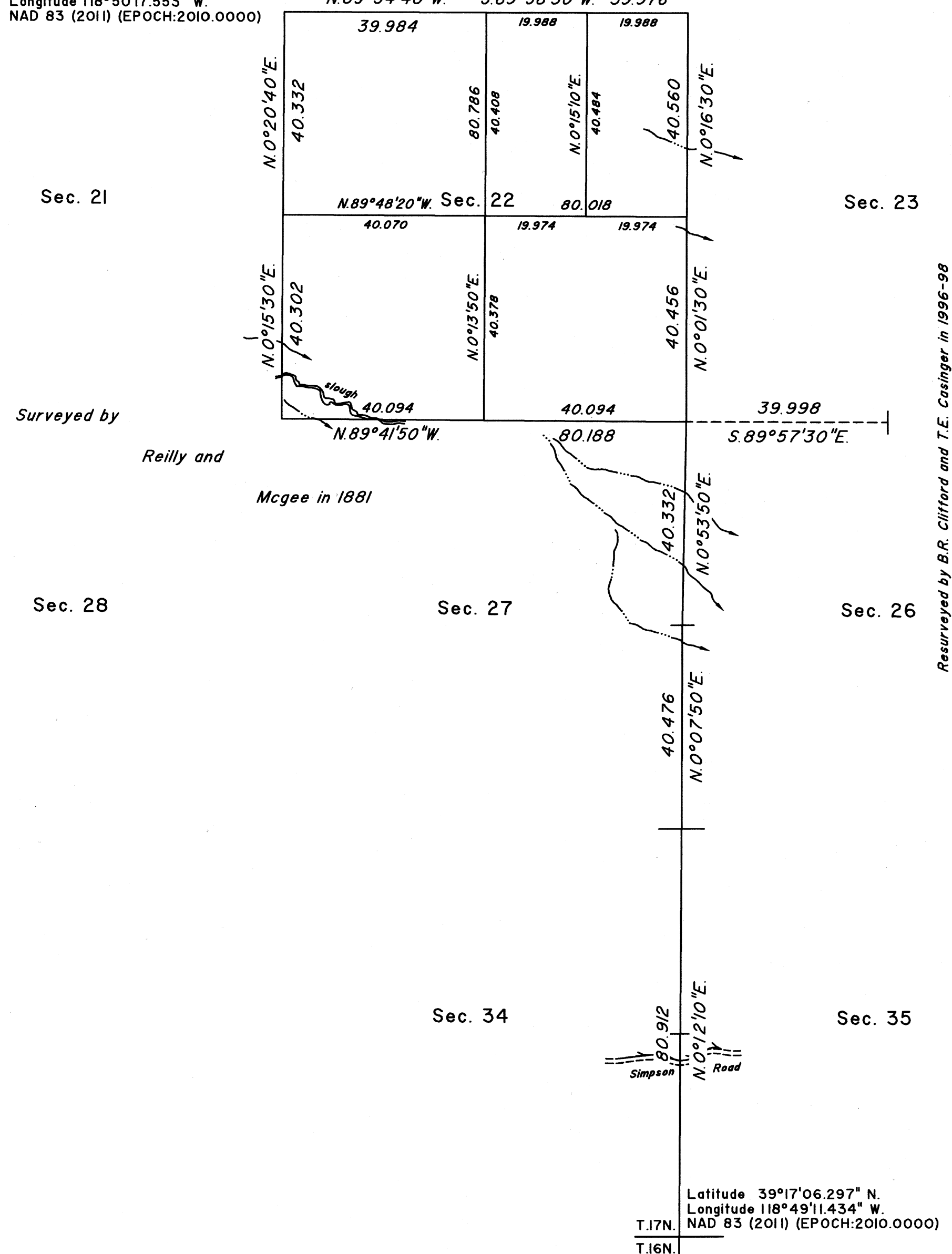


DEPENDENT RESURVEY AND SUBDIVISION

N. 89°54'40"W. S. 89°58'30"W. 39.976



Survey executed by Kelly R. Totten, Cadastral Surveyor,
beginning February 12, 2024, and completed March 12,
2024, pursuant to Special Instructions dated February 7,
2024, for Group No. 1013, Nevada.

This plat is strictly conformable to the approved field notes, and the survey, having been correctly executed in accordance with the requirements of law and the regulations of this Bureau, is hereby accepted.

Clarence Strickland

Chief Cadastral Surveyor for Nevada

T.17N., R.28E., M.D.M.