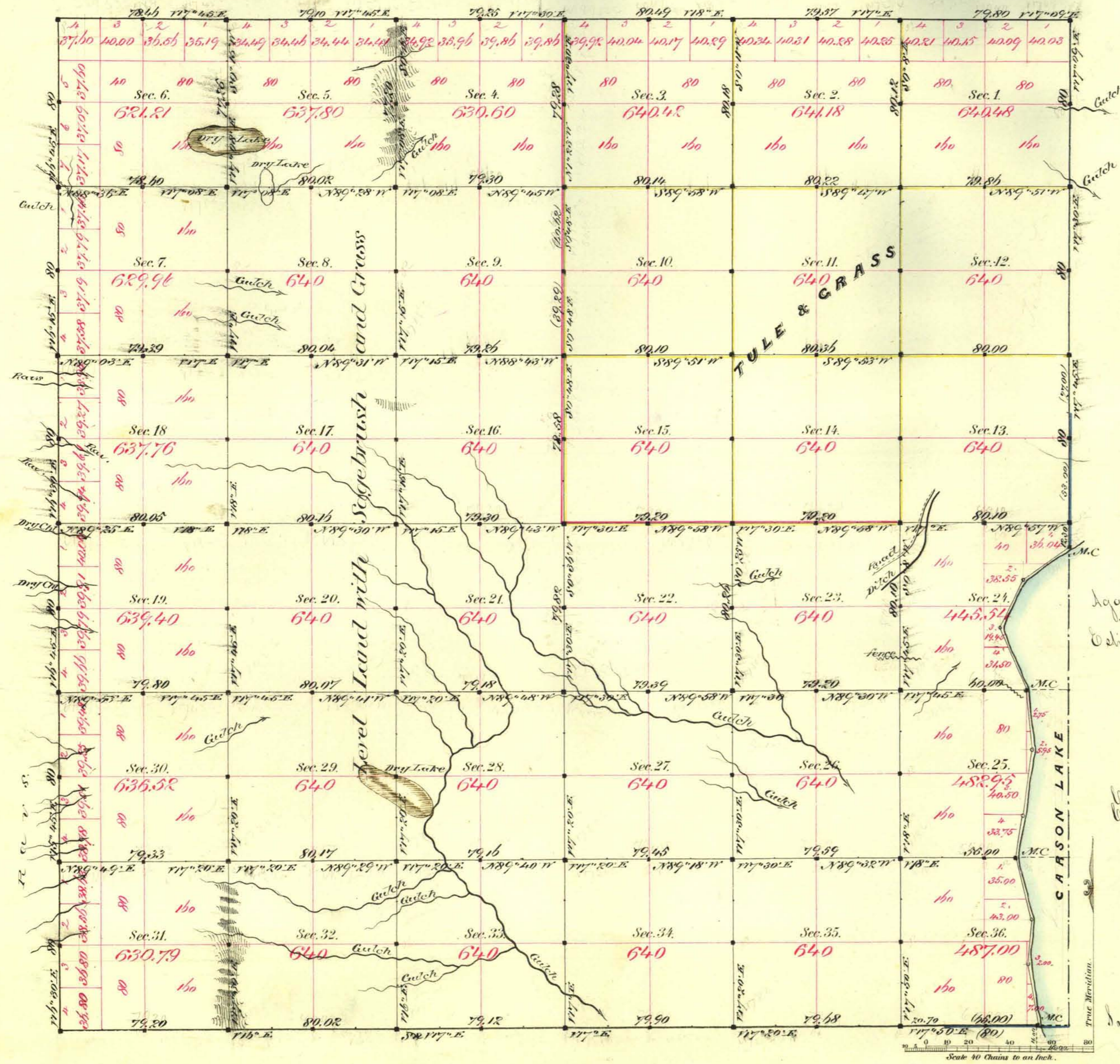


TOWNSHIP N^o 17 NORTH RANGE N^o 28 EAST MOUNT DIABLO MERIDIAN



Meanders of Carson Lake

Sec.	Course	Distance
Begin at Meander Corner on S. line of Sec. 36 thence		
36	N 9° 11'	30.90
"	N 5° E	19.80
"	N 45° 11'	30.73
35	S 10° 22' E	20.00
"	N 9° E	33.00
"	N 53 1/2° 11'	28.50
24	N 23 1/2° 11'	25.00
"	N 38° E	24.00
"	N 34° E	25.40
Aggregate 3-17-53		

Aggregate Area of Public Land surveyed by Munroe & Balmann (July 24th 1874) 5,830.10
 Estimated " Carson Lake Reilly & Magee (Dec 21st 1880) 16,651.01
 Aggregate 22,481.11

Commenced January 13th 1881
 Completed " 15th "

Subdivision line not noted from Variation 16' 30" East

Survey Designated	By Whom Surveyed	Date of Contract	Amount of Survey	When Surveyed	Acres
Township Black	Munroe	November 23 rd 1874	29-02-40	1874	10
" Blue	Reilly & Magee	Dec. 21 st 1880	1-44-00	1881	103
N.S. & Co. by Black (partial)	"	"	13-42-29	"	63
Subdivision yellow	Munroe & Balmann	July 24 th 1874	17-00-91	Octbr 1874	63
" full subdivision	Reilly & Magee	Dec. 21 st 1880	4-75-17	January 1881	103
Black	"	"	42-21-19	"	"
Meander line	"	"	3-07-53	"	"

The above Map of Township N^o 17 North of Range N^o 28 East Mt. Diablo Meridian is strictly conformable to the field notes of the survey thereof on file in this Office, which have been examined and approved.

Surveyor General's Office,
 Virginia City Nev.
 February 1st 1881

D. J. Davis
 Sur. Gen.