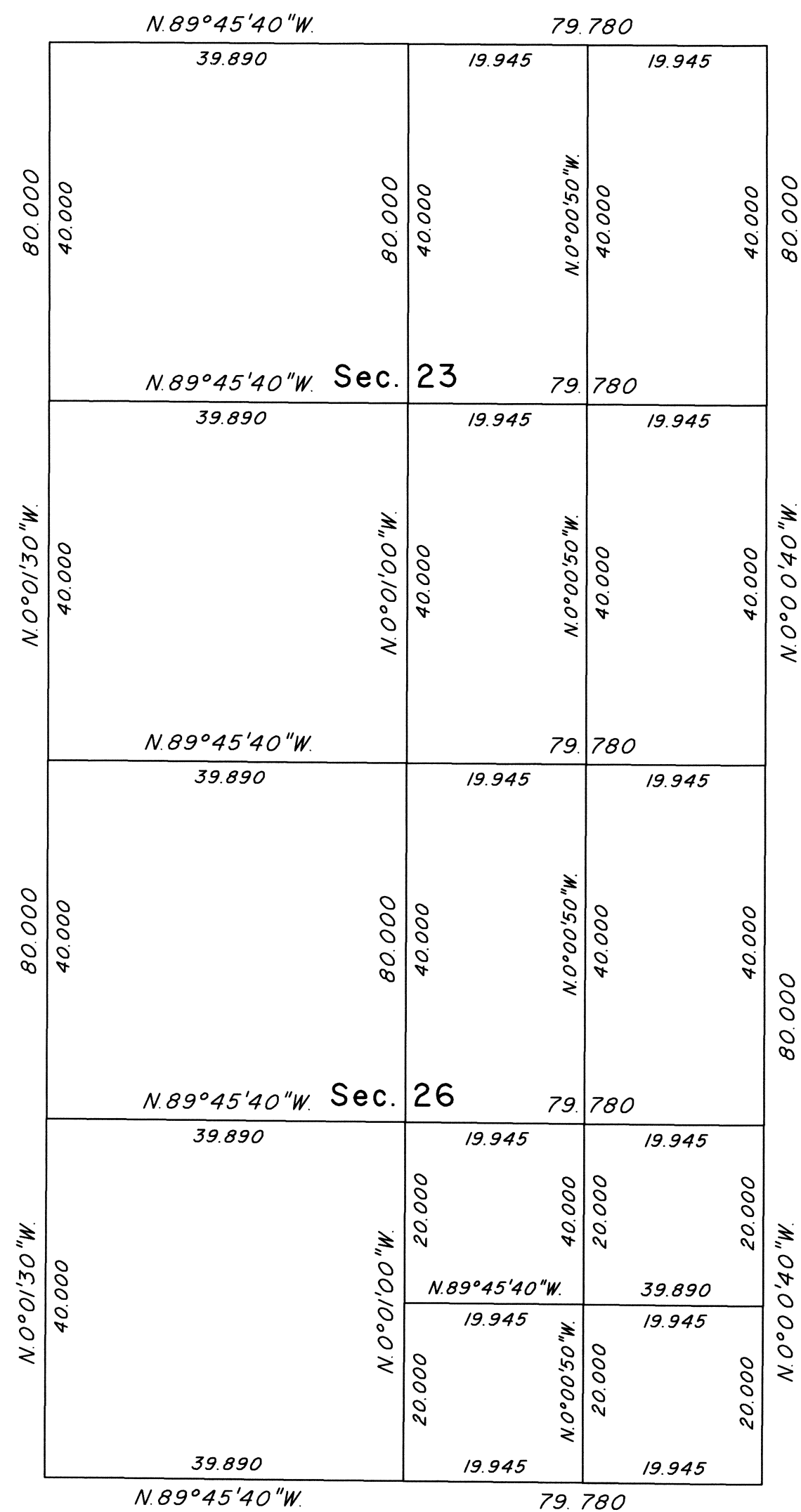


TOWNSHIP 17 NORTH, RANGE 26 EAST, OF THE MOUNT DIABLO MERIDIAN, NEVADA

ENLARGED DIAGRAM OF SECTIONS 23 AND 26

OFFICIALLY FILED
NEVADA STATE OFFICE
at 10:00 AM on SEP 25 2024



Reference should be made to Sheet No. 1 for survey information.

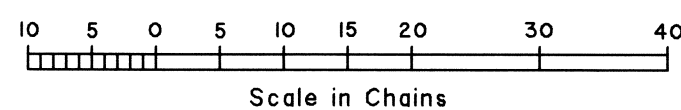
UNITED STATES DEPARTMENT OF THE INTERIOR
BUREAU OF LAND MANAGEMENT

Reno, Nevada September 23, 2024

This plat is strictly conformable to the approved field notes, and the survey, having been correctly executed in accordance with the requirements of law and the regulations of this Bureau, is hereby accepted.

For the Director

Clarence D. Stickland
Chief Cadastral Surveyor for Nevada



RPM

T.17N., R.26E., M.D.M.