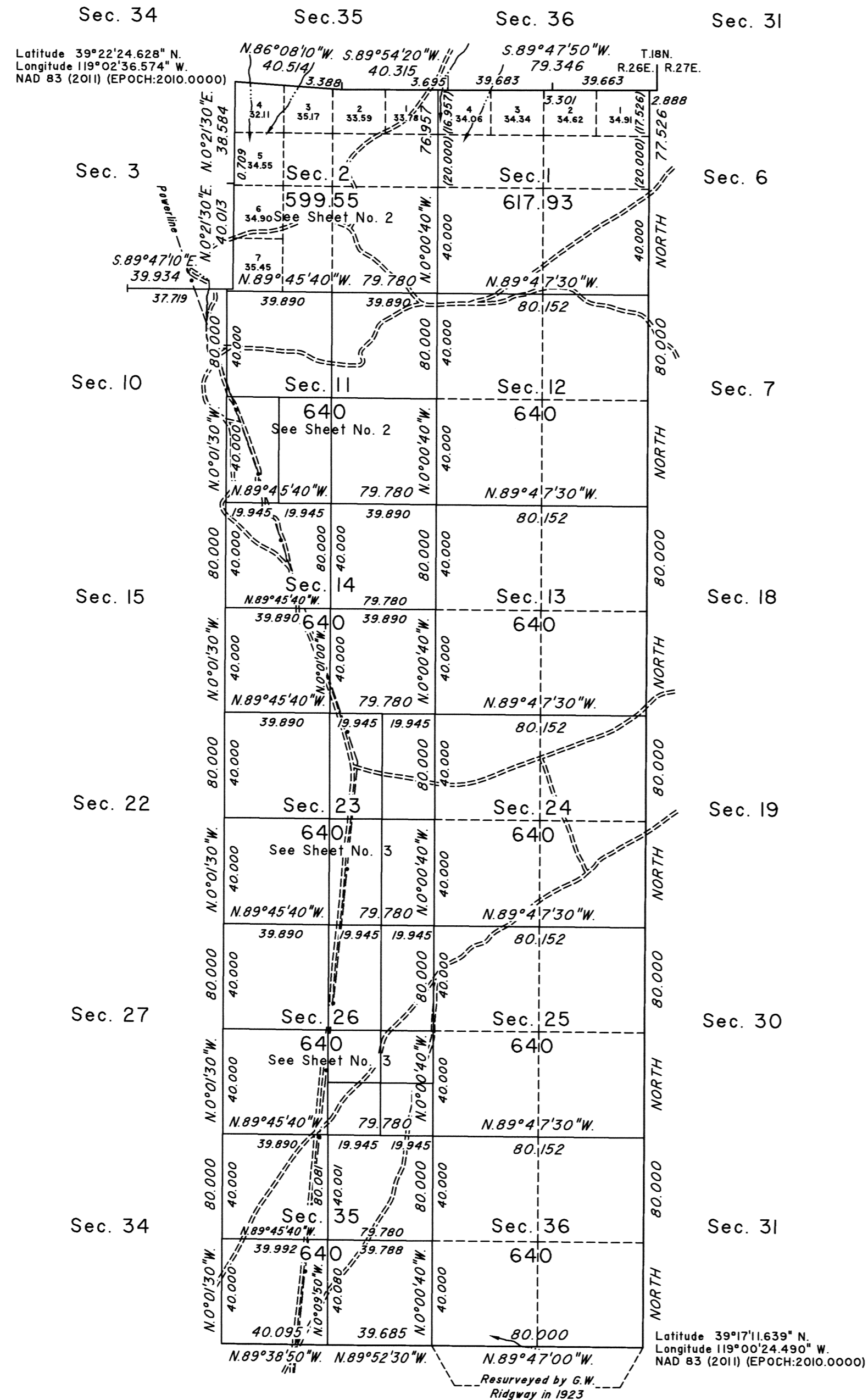


TOWNSHIP 17 NORTH, RANGE 26 EAST, OF THE MOUNT DIABLO MERIDIAN, NEVADA

DEPENDENT RESURVEY, SURVEY AND SUBDIVISIONS



A history of surveys is contained in the field notes.

The dependent resurvey of a portion of the north boundary of Township 16 North, Range 26 East was executed concurrently under Group No. 1006.

This plat, in three sheets, represents the dependent resurvey of a portion of the south boundary of Township 18 North, Range 26 East and a portion of the subdivisional lines, designed to restore the corners in their true original locations according to the best available evidence, and the survey of the east boundary, a portion of the subdivisional lines and the subdivision of sections 11, 14, 23, 26 and 35, Township 17 North, Range 26 East, Mount Diablo Meridian, Nevada.

Survey executed by Richard J. Dieckmann, Cadastral Surveyor, beginning September 26, 2023 and completed April 16, 2024, pursuant to Special Instructions dated September 21, 2023, for Group No. 1008, Nevada.

UNITED STATES DEPARTMENT OF THE INTERIOR
BUREAU OF LAND MANAGEMENT

Reno, Nevada September 23, 2024

This plat is strictly conformable to the approved field notes, and the survey, having been correctly executed in accordance with the requirements of law and the regulations of this Bureau, is hereby accepted.

For the Director

Clarence D. Stinchland
Chief Cadastral Surveyor for Nevada

