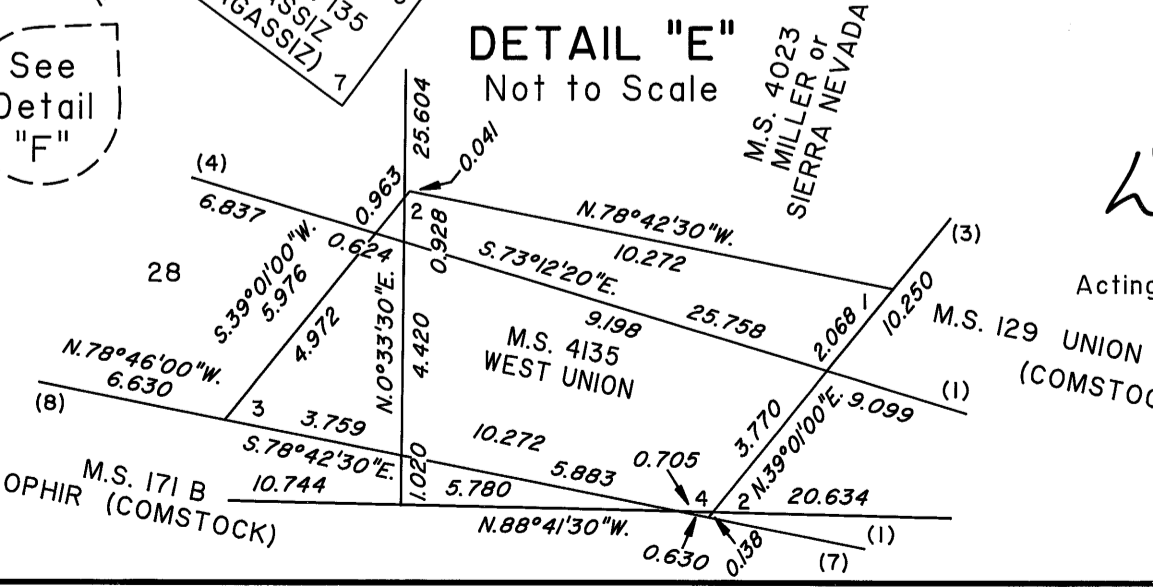
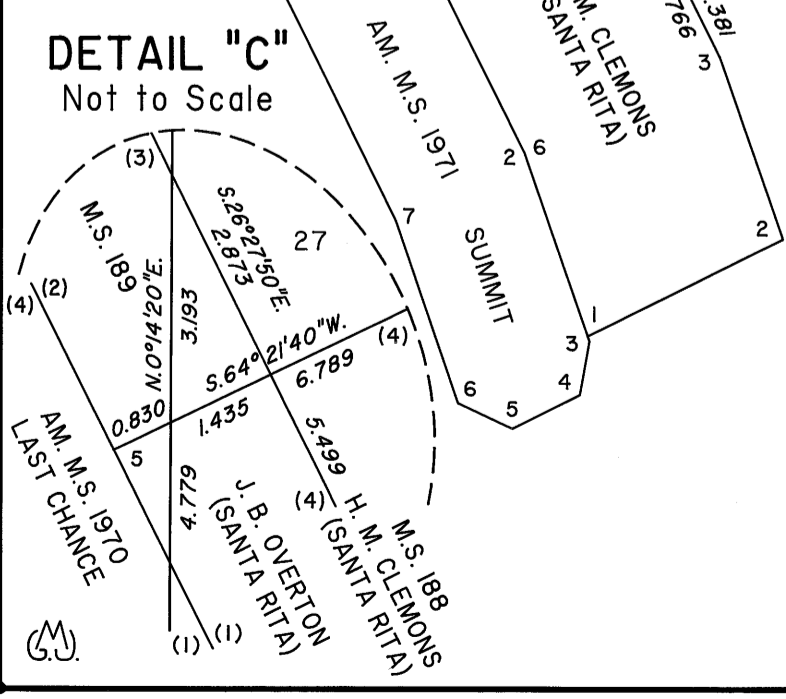
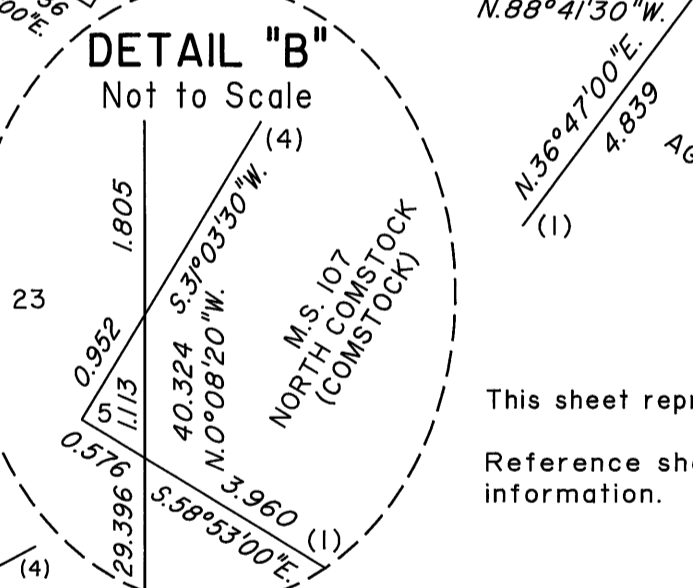
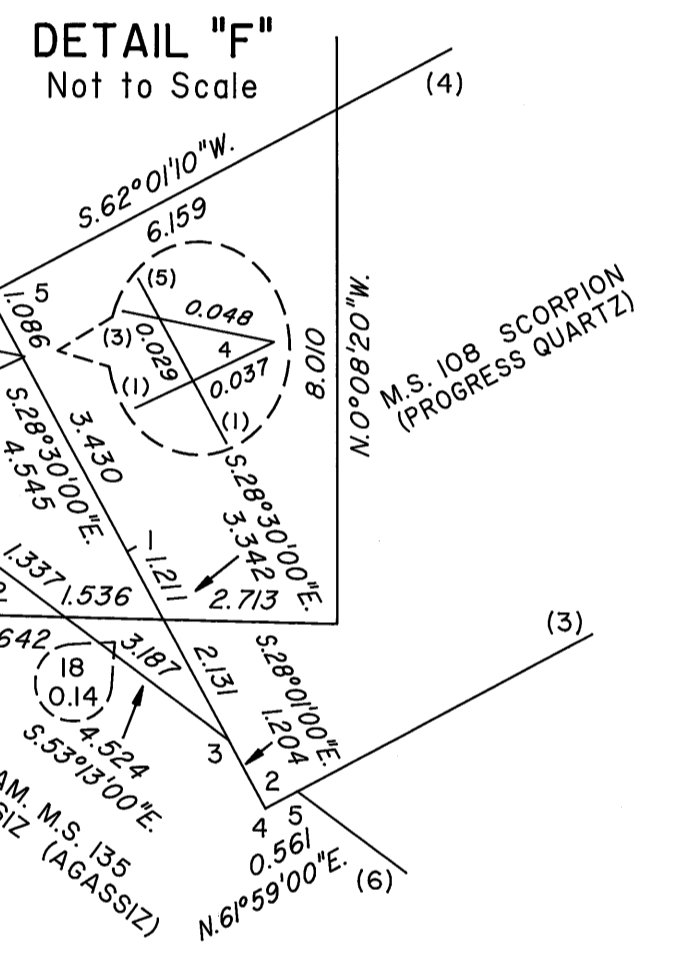
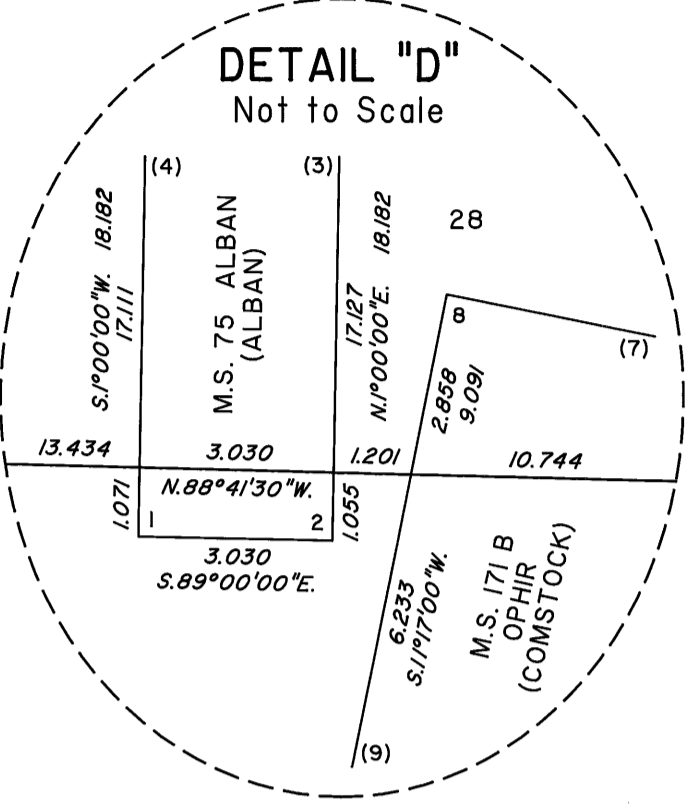
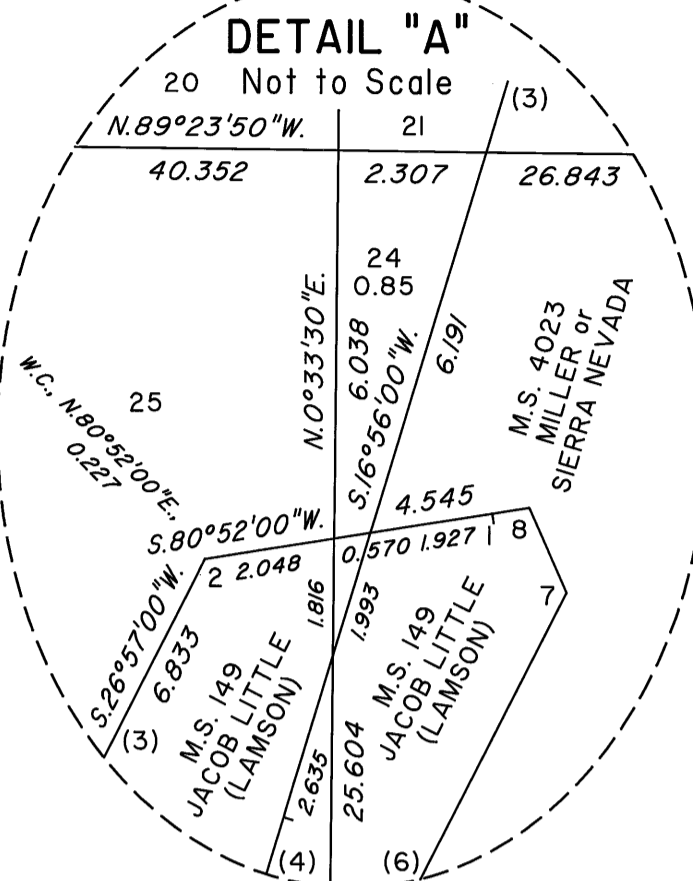
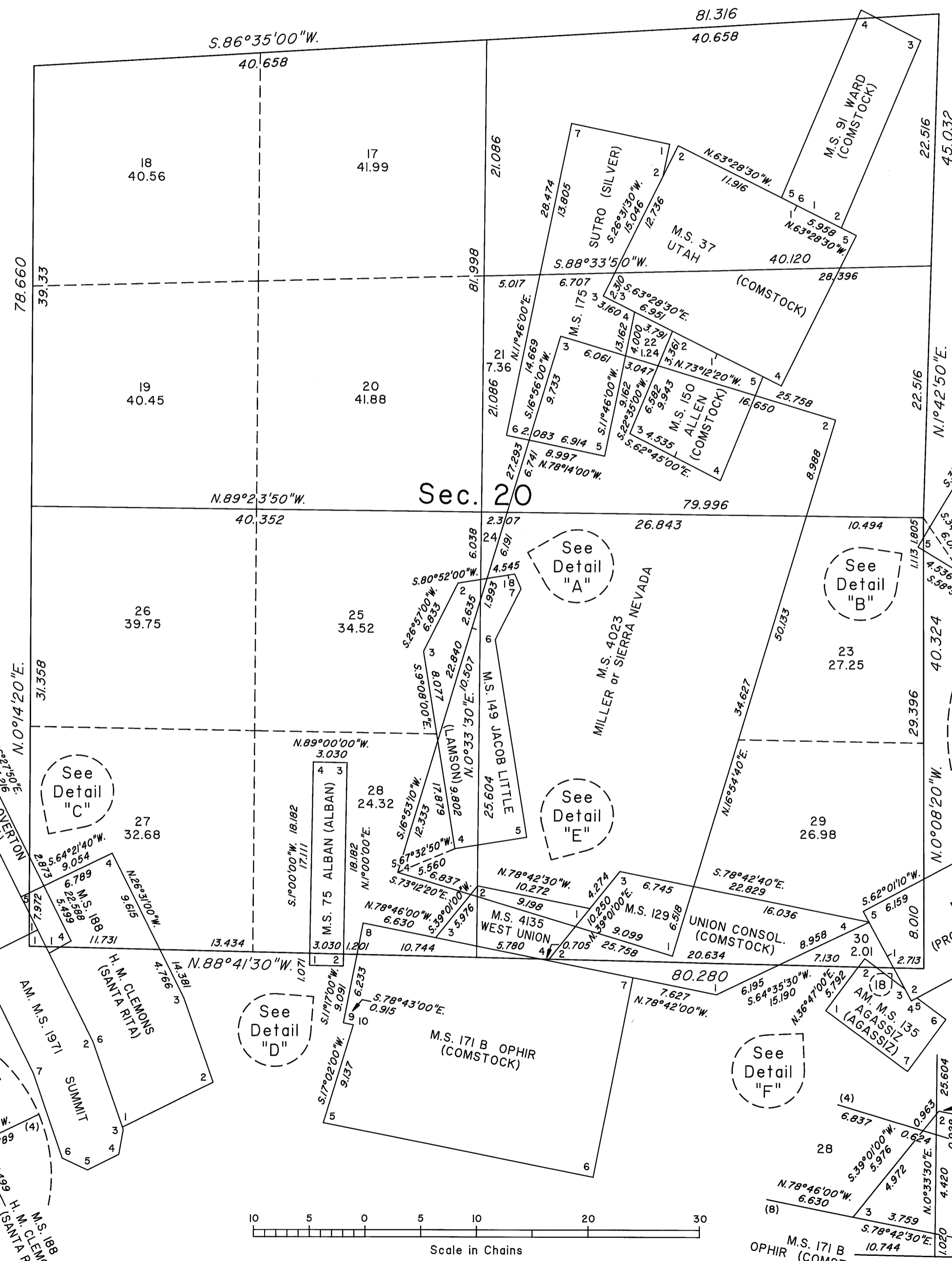


TOWNSHIP 17 NORTH, RANGE 21 EAST, OF THE MOUNT DIABLO MERIDIAN, NEVADA

ENLARGED DIAGRAM

OFFICIALLY FILED
NEVADA STATE OFFICE
at 10:00 AM on July 31, 2008



This sheet represents an enlarged diagram of section 20. Reference should be made to Sheet No. 1 for survey information.

UNITED STATES DEPARTMENT OF THE INTERIOR
BUREAU OF LAND MANAGEMENT
Reno, Nevada July 29, 2008

This plat is strictly conformable to the approved field notes, and the survey, having been correctly executed in accordance with the requirements of law and the regulations of this Bureau, is hereby accepted.

For the Director

David J. Clark

Acting Chief Cadastral Surveyor, Nevada

