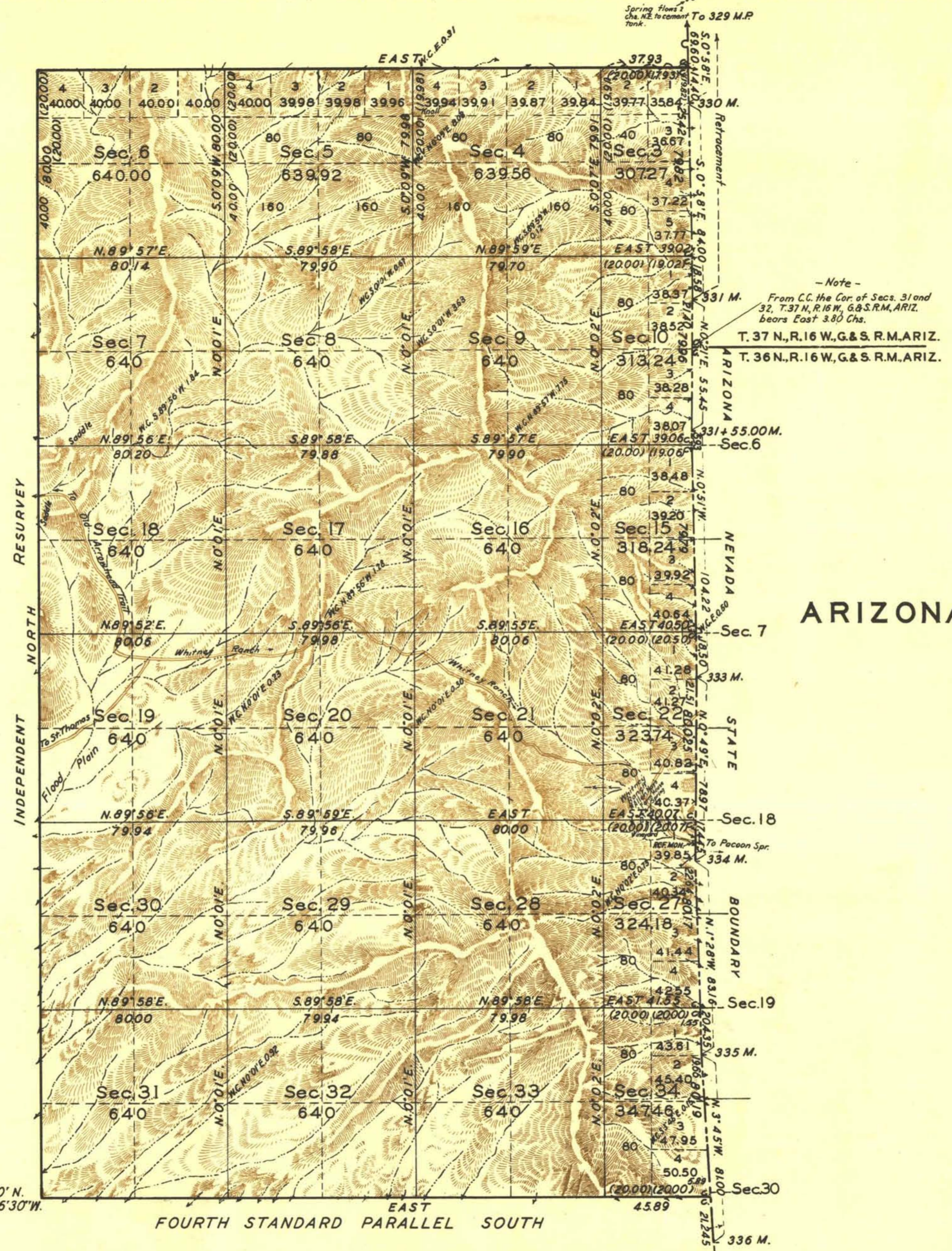


TOWNSHIP N°16 SOUTH, RANGE N°71 EAST, OF THE MOUNT DIABLO MERIDIAN, NEVADA.



Latitude: 36°30' N.
Longitude: 114°06'30" W.

Scale: 40 Chains to an Inch
Area Surveyed 13,453.61 Acres.

LINES DESIGNATED	BY WHOM SURVEYED	GROUP		WHEN SURVEYED	
		N°	DATE	MILEAGE MLS CHS	BEGUN COMPLETED
Subdivisional	Carl S. Swanholm	160	July 17, 29, Dec. 22, 32	35 3973	April 20, 1932 May 13, 1933
W nd N. bdrs.	" " " "	"	" " " "	9 3793	" " " "
S. boundary	Swanholm & Yundt	"	" " " "	3 4589	" " " "
State Bdy. (Retr.)	" " " "	"	" " " "	8 1121	" " " "
Miscellaneous	Carl S. Swanholm	"	" " " "	1 3653	" " " "

Office of U.S. Supervisor of Surveys
Denver, Colorado, Jan. 27, 1940
The above plot of Township No. 16 South, Range No. 71 East, of the Mount Diablo Meridian, Nevada, is strictly conformable to the field notes of the survey thereof which have been examined and approved.

Wm. Johnson
U.S. Supervisor of Surveys.

DEPARTMENT OF THE INTERIOR
GENERAL LAND OFFICE
Washington, D.C., Feb. 5, 1940
The survey represented by this plat having been correctly executed in accordance with the requirements of law and the regulations of this office, is hereby accepted.

John David Wolfson
Acting Assistant Commissioner.