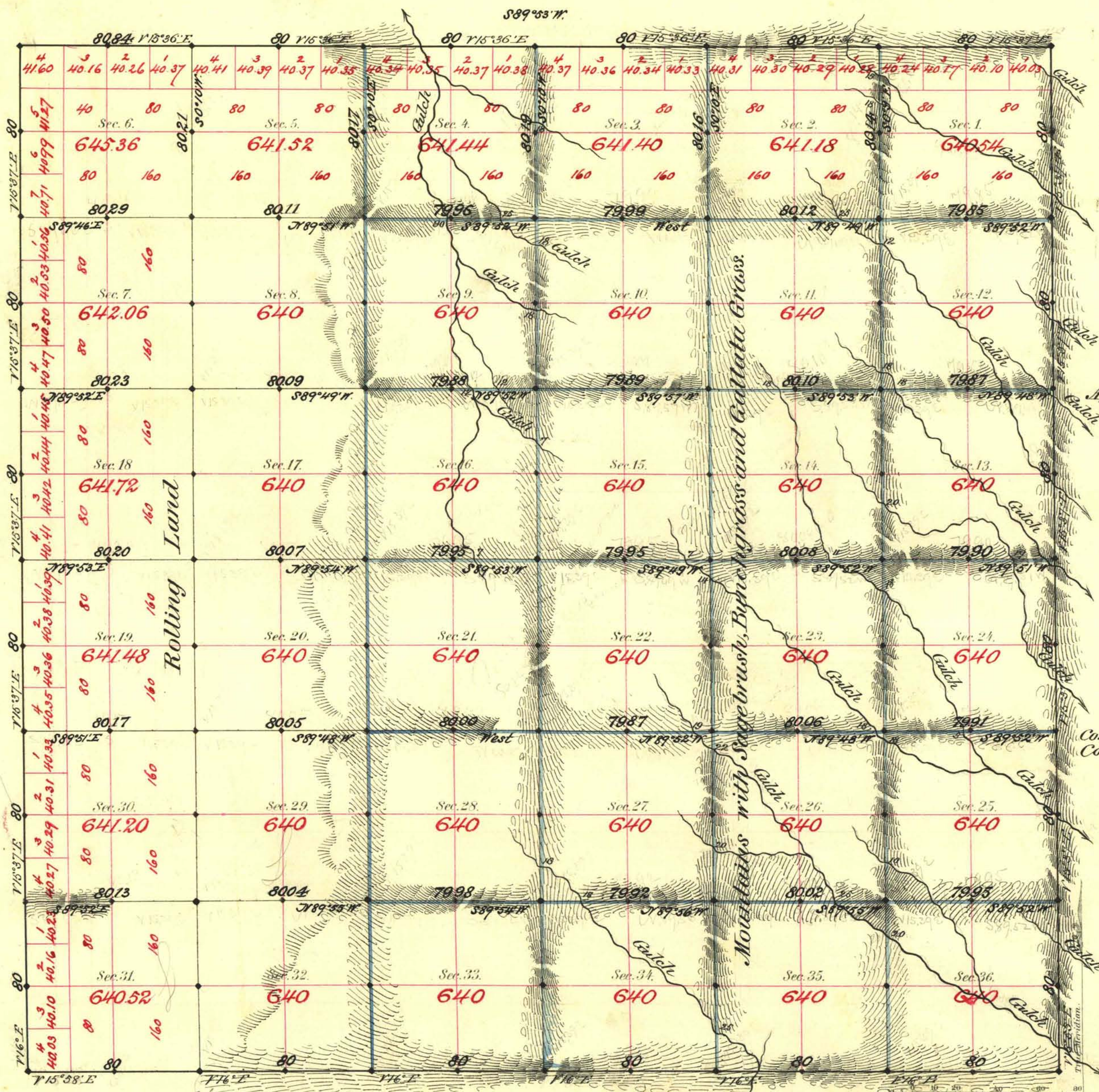


TOWNSHIP N^o 16 SOUTH RANGE N^o 66 EAST MOUNT DIABLO MERIDIAN



Aggregate Area of Public Land surveyed 23058.42 Acres

Commenced October 8th 1881.
Completed " 15th "

Subdivisions run with a Variation of 15°39' East.

For connections see T 17

Survey Designated	By Whom Surveyed	Date of Contract	Amount of Surveys	When Surveyed
Township lines	Woods & Myrick	Jan. 20 th 1881	24 ⁰⁰ - 00 ⁰⁰ - 84 ⁰⁰ 1/2 ⁰⁰	1881
Subdiv ^{ns} black	R. H. Woods	April 10 th "	16 - 01 - 59	October
" blue	"	" " "	43 - 79 - 91	"

7th Con
109
184

The above Map of Township N. 16 South of Range N. 66 East of Mount Diablo Meridian is strictly conformable to the field notes of the survey thereof on file in this Office, which have been examined and approved.

Surveyor General's Office,
Virginia City, Nevada
December 24, 1881

A. S. Packer
Sur. Gen. Nev.