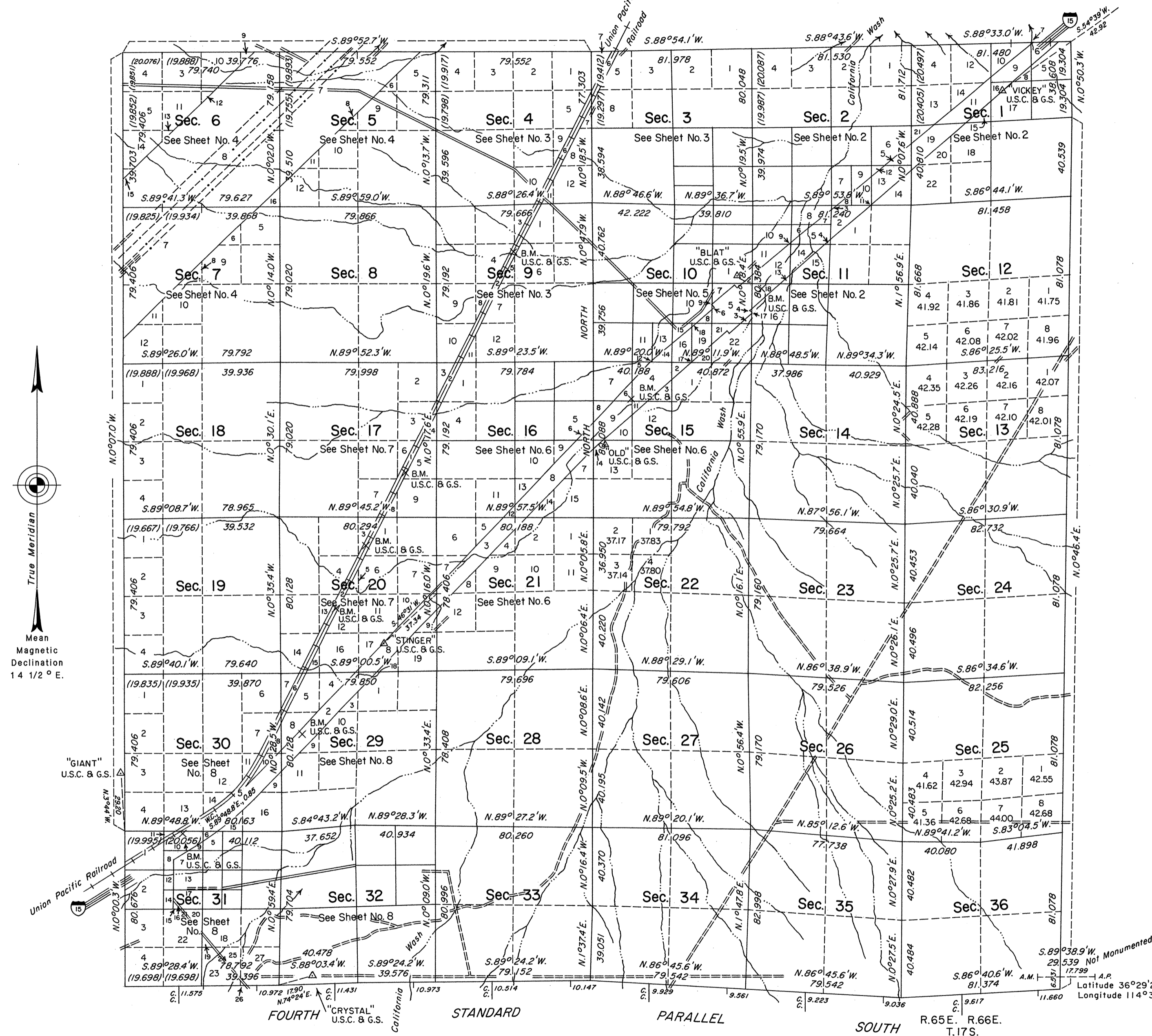


TOWNSHIP 16 SOUTH, RANGE 65 EAST, OF THE MOUNT DIABLO MERIDIAN, NEVADA

DEPENDENT RESURVEY AND SUBDIVISION OF SECTIONS



True Meridian
Mean
Magnetic
Declination
14 1/2° E.

History of the earlier surveys is contained in the field notes.

This plat, in 8 sheets, represents a dependent resurvey of the Fourth Standard Parallel South, through R. 65 E., and the east, west and north boundaries and the subdivisional lines of T. 16 S., R. 65 E., designed to restore the corners in their true original locations according to the best available evidence; and the survey of the subdivision of certain sections. See Sheet Nos. 2 through 8 for enlargements of sections 1, 2, 3, 4, 5, 6, 7, 9, 10, 11, 15, 16, 17, 20, 21, 29, 30, 31 and 32.

Lottings and areas, except as indicated hereon, are as shown on the plat approved December 1, 1881.

Survey executed by James A. Mack and Stephen R. Lambeth, Cadastral Surveyors, beginning August 21, 1986, and completed September 8, 1988, under Special Instructions dated August 19, 1986 for Group No. 638, Nevada.

UNITED STATES DEPARTMENT OF THE INTERIOR
BUREAU OF LAND MANAGEMENT

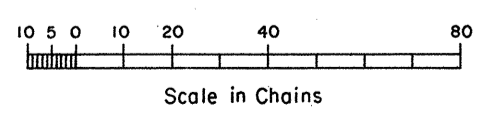
Reno, Nevada May 30, 1989

This plat is strictly conformable to the approved field notes, and the survey, having been correctly executed in accordance with the requirements of law and the regulations of this Bureau, is hereby accepted.

For the Director

Larel E. Bland

Chief Cadastral Surveyor



Sec. 7 Sec. 8 Sec. 9 Sec. 10 Sec. 11 Sec. 12 Sec. 7