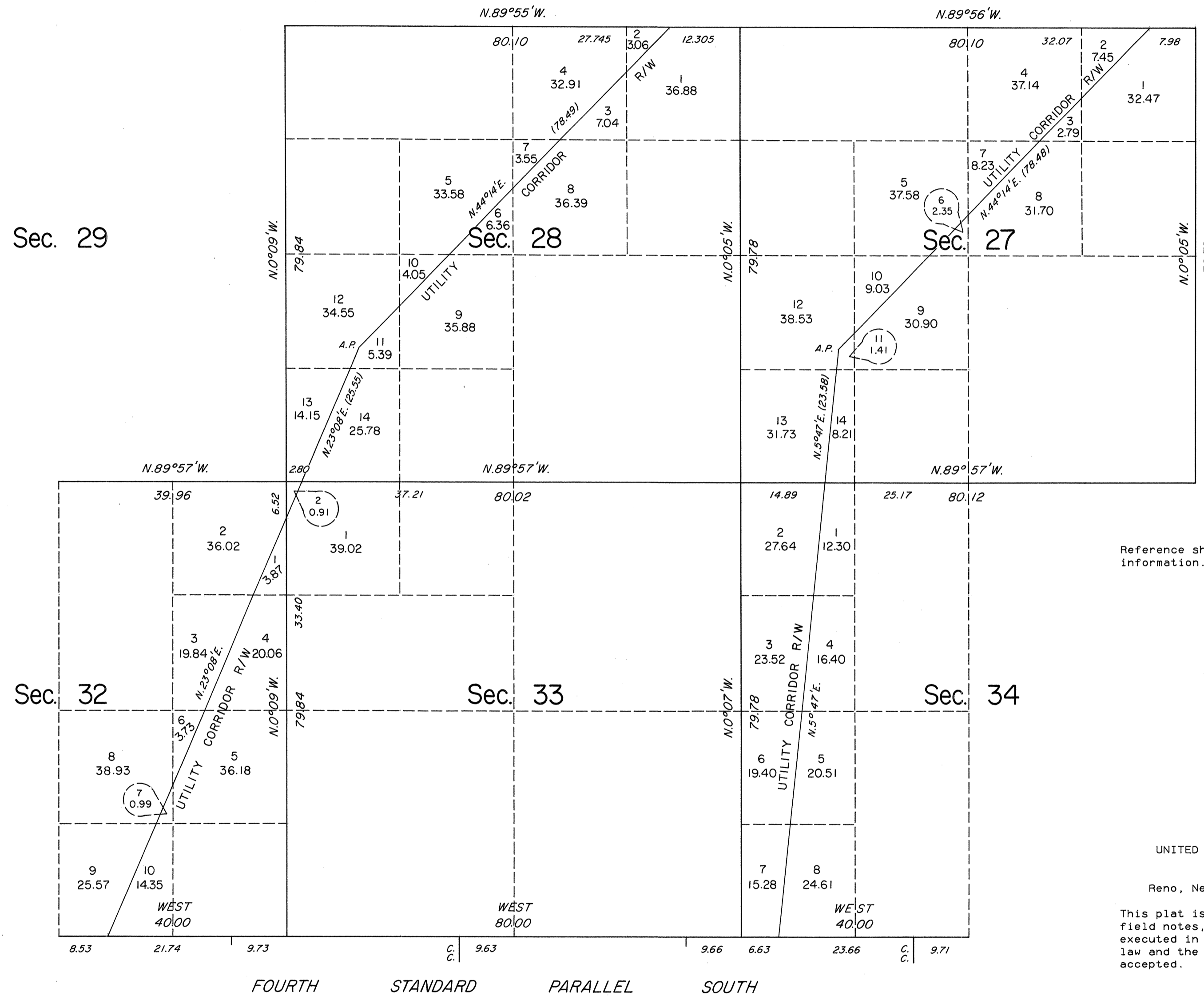


TOWNSHIP 16 SOUTH, RANGE 64 EAST, OF THE MOUNT DIABLO MERIDIAN, NEVADA

ENLARGED DIAGRAM OF SECS. 27, 28, E1/2 32, 33 AND W1/2 34



Reference should be made to Sheet No. 1 for survey information.

UNITED STATES DEPARTMENT OF THE INTERIOR
BUREAU OF LAND MANAGEMENT
Reno, Nevada August 13, 1990

This plat is strictly conformable to the approved field notes, and the survey, having been correctly executed in accordance with the requirements of law and the regulations of this Bureau, is hereby accepted.

For the Director
John D. Parrish
Chief Cadastral Surveyor

Sec. 9 Sec. 10

