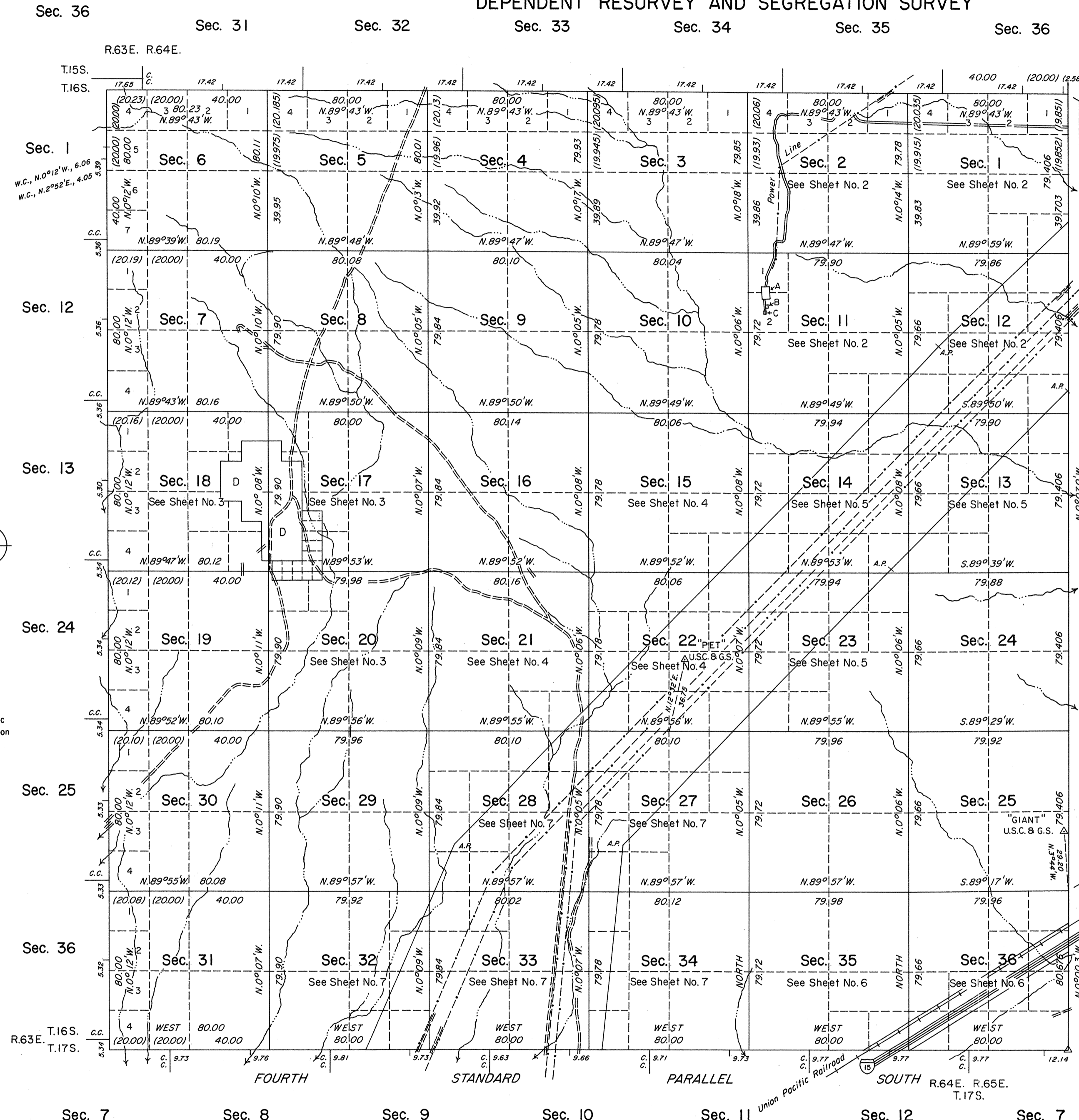


TOWNSHIP 16 SOUTH, RANGE 64 EAST, OF THE MOUNT DIABLO MERIDIAN, NEVADA

DEPENDENT RESURVEY AND SEGREGATION SURVEY



History of the earlier surveys is contained in the field notes.

This plat, in seven sheets, represents a dependent resurvey of the Fourth Standard Parallel South, through Range 64 East, the north and west boundaries and the subdivisional lines, designed to restore the corners in their original locations according to the best available evidence; and the survey of Parcels A, B, C, D, and the mineral segregation of the Jordan Millsites 1 through 10 of T. 16 S., R. 64 E. See Sheet Nos. 2 through 7 for enlargements of sections 1, 2, 11, 12, 13, 14, 15, 17, 18, 20, 21, 22, 23, 27, 28, 32, 33, 34, 35, 36, Parcels A, B, C, D, and the mineral segregation of the Jordan Millsites.

Lottings and areas, except as indicated hereon, are as shown on the plat approved December 24, 1881.

Survey executed by Stephen R. Lambeth, Cadastral Surveyor, beginning January 13, 1987 and completed August 21, 1989, under Special Instructions dated January 8, 1987, and Supplemental Special Instructions dated February 11, 1987 and June 15, 1989, for Group No. 641, Nevada.

UNITED STATES DEPARTMENT OF THE INTERIOR
BUREAU OF LAND MANAGEMENT

Reno, Nevada August 13, 1990

This plat is strictly conformable to the approved field notes, and the survey, having been correctly executed in accordance with the requirements of law and the regulations of this Bureau, is hereby accepted.

For the Director

Chief Cadastral Surveyor

Tellurometer Traverse Station
Latitude 36°29'25.770"N.
Longitude 114°45'52.135"W.
NAD 27

Resurveyed by J. A. Mack and S. R. Lambeth in 1966-68