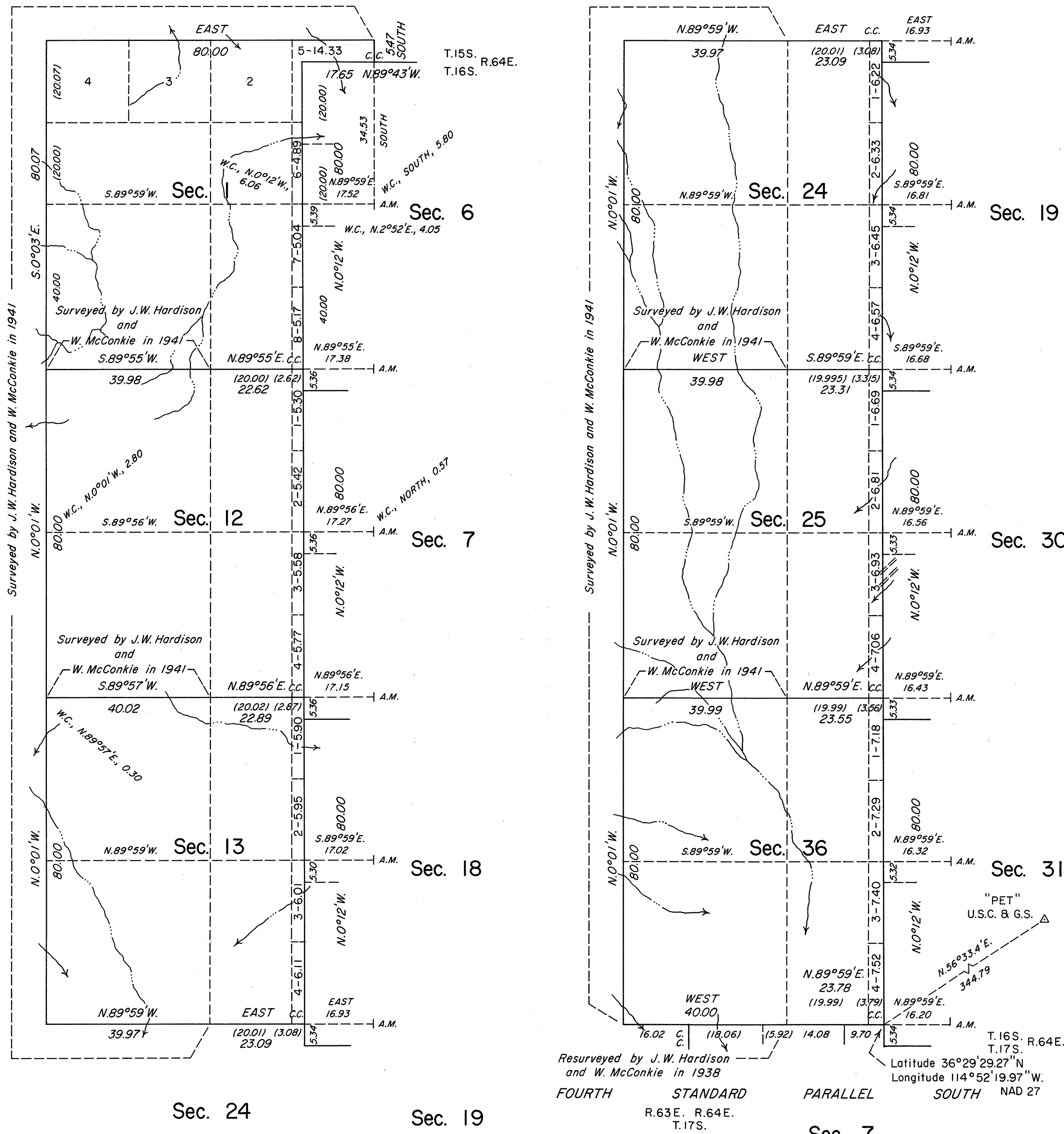


TOWNSHIP 16 SOUTH, RANGE 63 EAST, OF THE MOUNT DIABLO MERIDIAN, NEVADA
DEPENDENT RESURVEY



History of the earlier surveys is contained in the field notes.

A dependent resurvey of the west and north boundaries of T. 16 S., R. 64 E., was executed concurrently under this same Group.

This plat represents a dependent resurvey of the Fourth Standard Parallel South, through a portion of Range 63 East, a portion of the east boundary and a portion of the subdivisional lines of T. 16 S., R. 63 E., designed to restore the corners in their original locations according to the best available evidence.

Lottings and areas, except as indicated hereon, are as shown on the plat approved January 21, 1947 and accepted June 5, 1947.

Survey executed by Stephen R. Lambeth, Cadastral Surveyor, beginning March 18, 1987 and completed April 1, 1987, under Supplemental Special Instructions dated February 11, 1987, for Group No. 641, Nevada.

UNITED STATES DEPARTMENT OF THE INTERIOR
BUREAU OF LAND MANAGEMENT

Reno, Nevada August 13, 1990

This plat is strictly conformable to the approved field notes, and the survey, having been correctly executed in accordance with the requirements of law and the regulations of this Bureau, is hereby accepted.

For the Director

John J. Parrish
Chief Cadastral Surveyor

Resurveyed by J.W. Hardison and W. McConkie in 1938
FOURTH STANDARD PARALLEL SOUTH
R.63E. R.64E. T.17S.
Latitude 36°29'29.27"N
Longitude 114°52'19.97"W
NAD 27

