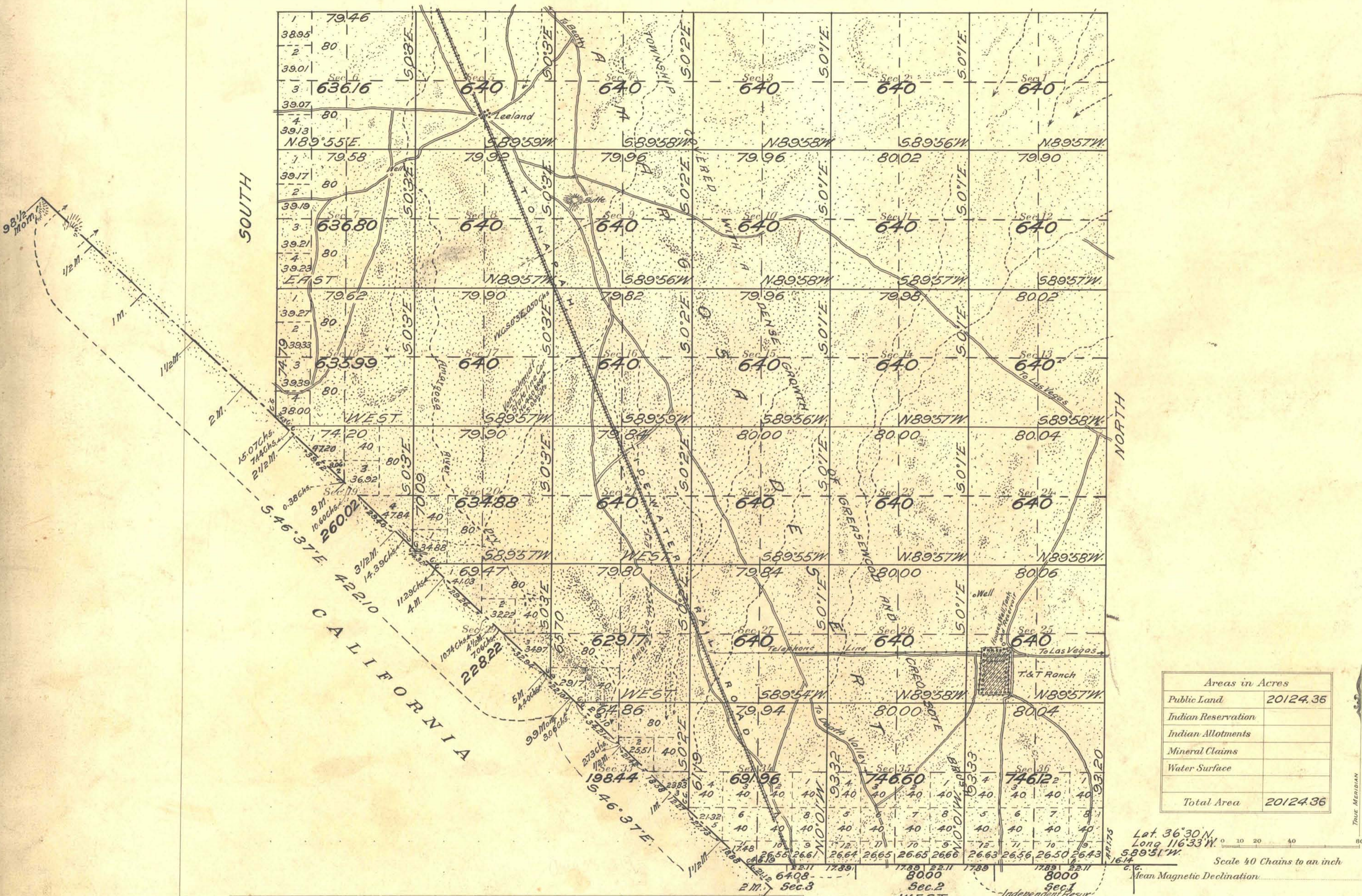


Township No 16 South Range No 48 East Mt Diablo Meridian, Nevada.

WEST



Areas in Acres	
Public Land	20124.36
Indian Reservation	
Indian Allotments	
Mineral Claims	
Water Surface	
Total Area	20124.36

Lat 36° 30' N.
 Long 116° 33' W.
 589° 51' W.
 Scale 40 Chains to an inch
 Mean Magnetic Declination

Surveys Designated	By Whom Surveyed	Group No.	Date	Amount of Surveys			When Surveyed	
				Mls.	chs.	lks.	Begun	Completed
North Boundary	Emil Voigt U.S.	77	Aug. 28, 1919	5	79	46	Feb. 14, 1921	Feb. 15, 1921
East Boundary	Cadastral Engineer	"	"	6	13	20	Jan. 29, 1921	Jan. 31, 1921
4th St. Far North	and	"	"	1	51	72	Feb. 17, 1921	Feb. 17, 1921
4th St. Far North Res.	W. H. Good U.S.	"	"	0	74	47	Jan. 29, 1921	Feb. 17, 1921
Nev.-Calif. Bay	Transitman	"	"	7	00	98	Feb. 3, 1921	Feb. 14, 1921
West Boundary	"	"	"	2	74	79	Feb. 15, 1921	Feb. 15, 1921
Subdivisions	"	"	"	53	30	26	Feb. 16, 1921	Feb. 23, 1921

FOURTH STANDARD PARALLEL SOUTH
 The above map of Township No. 16 South Range No. 48 East of the Mount Diablo Meridian Nevada is strictly conformable to the field notes of the survey thereof on file in this office, which have been examined and approved
 U. S. Surveyor General's Office.
 Reno, Nevada; May 8, 1922.

J. S. Elden
 Surveyor General.