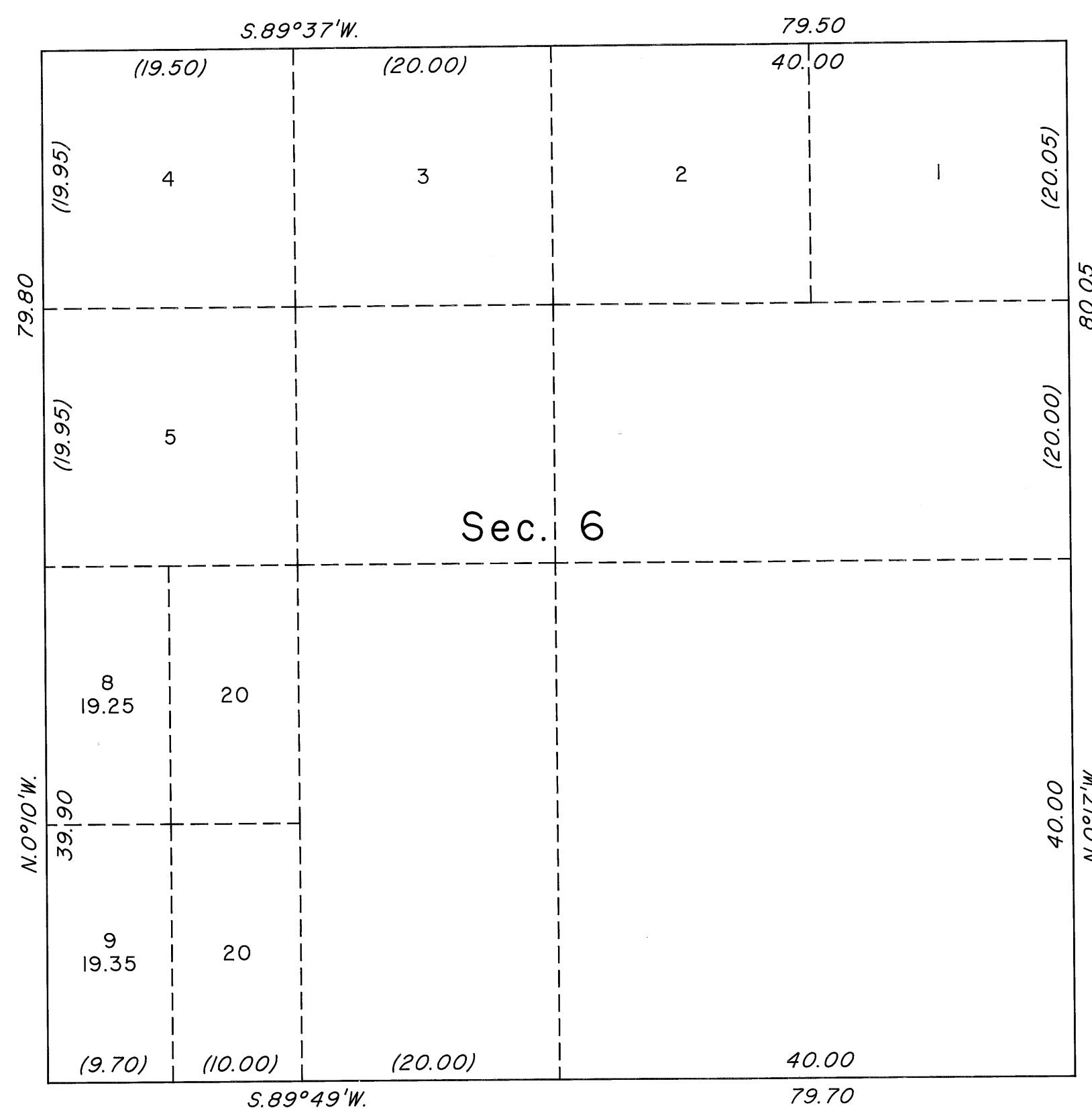
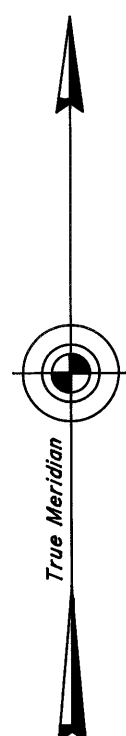


ORIGINAL

OFFICIALLY FILED  
NEVADA STATE OFFICE  
at 10:00 AM on October 15, 2009

TOWNSHIP 16 NORTH, RANGE 64 EAST, OF THE MOUNT DIABLO MERIDIAN, NEVADA  
SUPPLEMENTAL PLAT OF SECTION 6



This plat, showing a subdivision of original lots 6 and 7, sec. 6, T. 16 N., R. 64 E., Mount Diablo Meridian, Nevada, is based upon the plats, approved June 15, 1872 and May 4, 1875, and the plat accepted November 5, 1975.

UNITED STATES DEPARTMENT OF THE INTERIOR  
BUREAU OF LAND MANAGEMENT

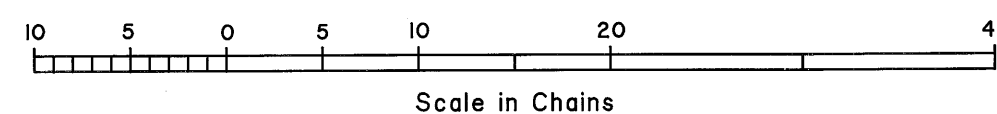
Reno, Nevada October 13, 2009

This plat, showing amended lottings, is based upon the official records, and having been correctly prepared in accordance with the regulations of this Bureau, is hereby accepted.

For the Director

*David A. Moran*

Chief Cadastral Surveyor, Nevada



63

T.16N., R.64E., M.D.M.