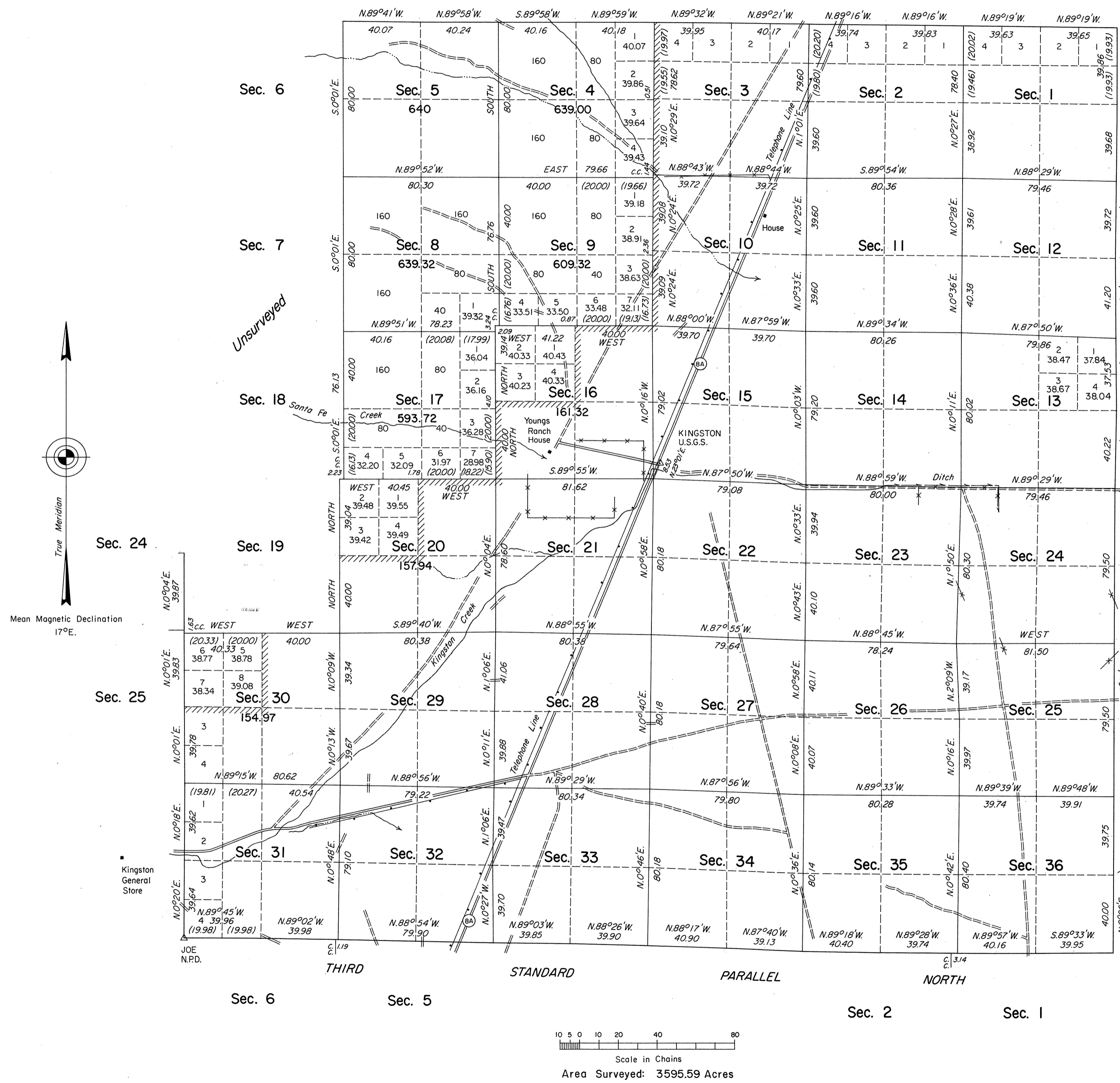


TOWNSHIP 16 NORTH, RANGE 44 EAST, OF THE MOUNT DIABLO MERIDIAN, NEVADA
DEPENDENT RESURVEY AND SURVEY



A history of surveys is contained in the field notes.

This plat represents the dependent resurvey of the Third Standard Parallel North, through R. 44 E., and the east boundary, a portion of the north and west boundaries and a portion of the subdivisional lines designed to restore the corners in their true original locations according to the best available evidence, and the survey completing a portion of the subdivisional lines of T. 16 N., R. 44 E., Mount Diablo Meridian, Nevada.

Except as indicated hereon, the lottings and areas are as shown on the plat approved December 27, 1873.

Survey executed by Robert A. Pratt and Ronald E. Williams, Cadastral Surveyors, beginning May 29, 1979, and completed August 17, 1979, pursuant to Special Instructions dated May 25, 1979, and Supplemental Special Instructions dated August 3, 1979, for Group No. 575, Nevada.

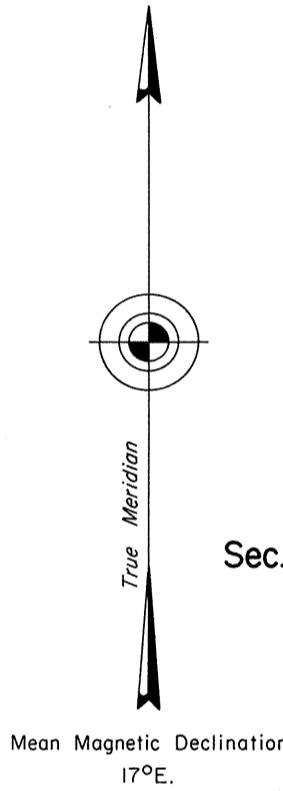
UNITED STATES DEPARTMENT OF THE INTERIOR
BUREAU OF LAND MANAGEMENT
Denver, Colorado April 22, 1981

This plat is strictly conformable to the approved field notes, and the survey, having been correctly executed in accordance with the requirements of law and the regulations of this Bureau, is hereby accepted.

For the Director

James D. Sisk

Acting Chief, Cadastral Survey
Examination and Approval Staff



Latitude 39°11'52.5"N,
Longitude 116°58'15.9"W