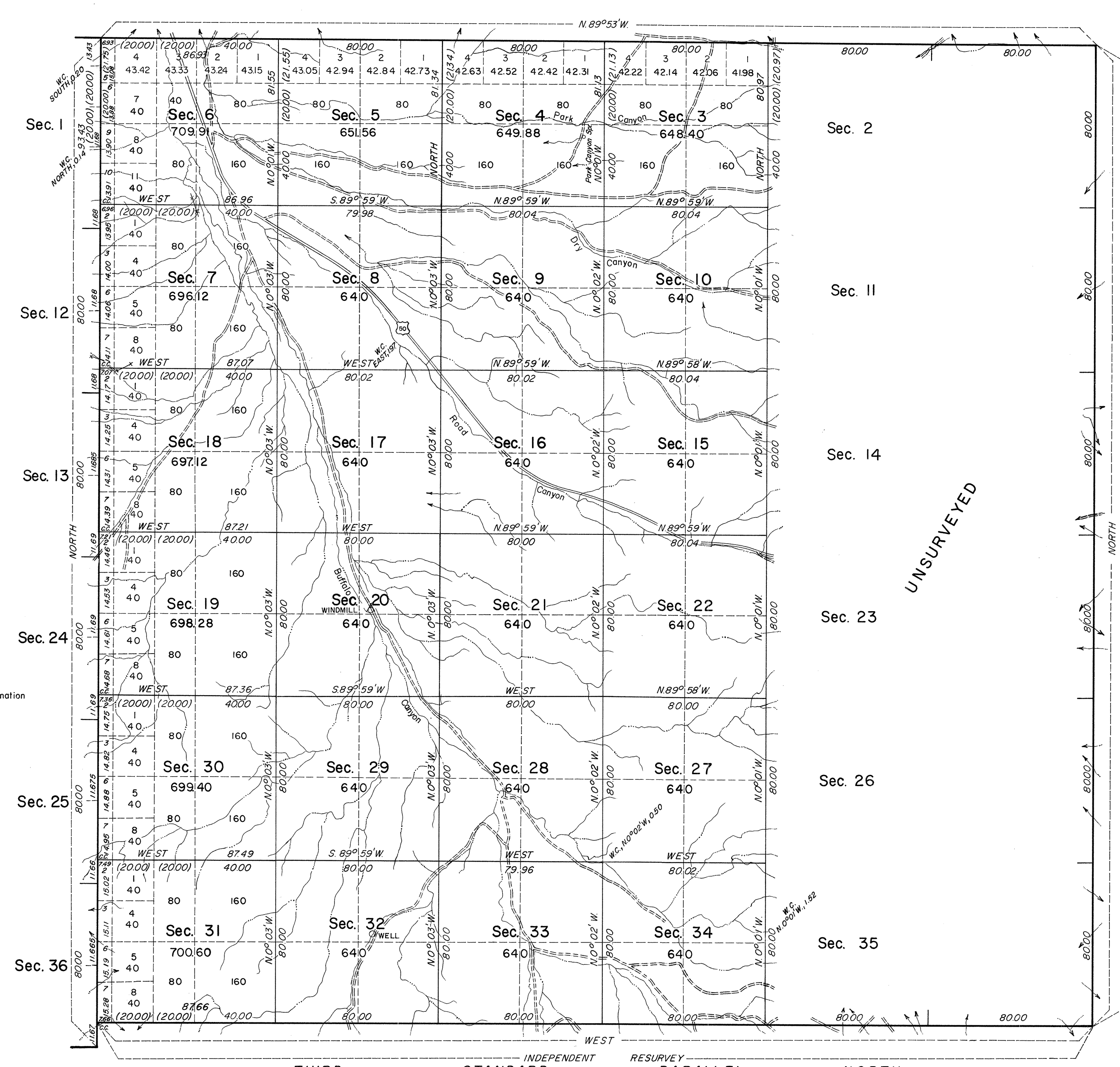


TOWNSHIP 16 NORTH, RANGE 37 EAST, OF THE MOUNT DIABLO MERIDIAN, NEVADA

OFFICIALLY FILED
NEVADA LAND OFFICE
10:00 AM Dec. 16, 1968



True Meridian
Mean Magnetic Declination
17 1/4° East

History of earlier surveys is contained in the field notes.

The survey of the west boundary was executed concurrently under T. 16 N., R. 36 E., of this group.

This plat represents the independent resurvey of the Third Standard Parallel North, through Range 37 East; the survey of the north boundary and a portion of the subdivisional lines of T. 16 N., R. 37 E., Mount Diablo Meridian, Nevada.

These surveys were executed by John D. Sorensen, Cadastral Surveyor, May 23, 1966, to August 4, 1966, under Special Instructions dated April 13, 1966, for Group No. 437, Nevada.

UNSURVEYED

Surveyed in 1915, by Andrew Nelson

UNITED STATES
DEPARTMENT OF THE INTERIOR
BUREAU OF LAND MANAGEMENT
Washington, D. C.
October 2, 1968

This plat is strictly conformable to the approved field notes, and the survey, having been correctly executed in accordance with the requirements of law and the regulations of this Bureau, is hereby accepted.
Latitude 39°12'01.2"N
Longitude 117°45'17.4"W

For the Director

R. A. Brown

Chief, Division of Engineering

THIRD INDEPENDENT RESURVEY PARALLEL NORTH
Scale in Chains
Area Surveyed 15,751.27 Acres

T16N R37E