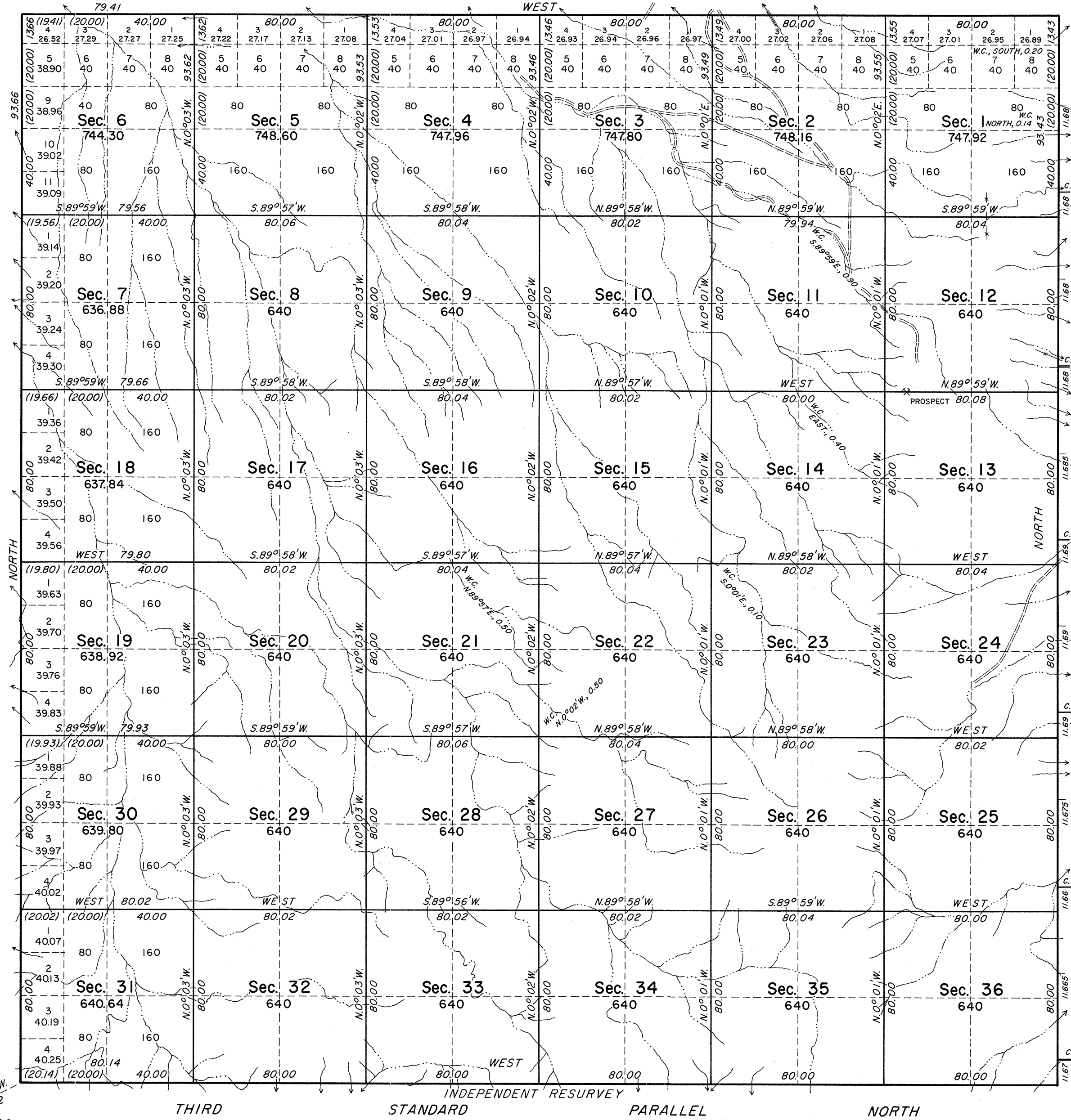


TOWNSHIP 16 NORTH, RANGE 36 EAST, OF THE MOUNT DIABLO MERIDIAN, NEVADA

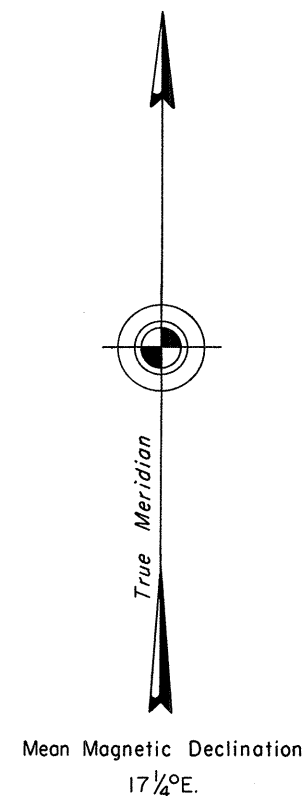
Surveyed in 1913, by H.W. Reppert



History of earlier surveys is contained in the field notes.

This plat represents the independent resurvey of the Third Standard Parallel North, through Range 36 East; the survey of the west and east boundaries and subdivisional lines of T. 16 N., R. 36 E., Mount Diablo Meridian, Nevada.

These surveys were executed by John D. Sorensen, Cadastral Surveyor, May 9, 1966, to August 23, 1966, under Special Instructions dated April 13, 1966, for Group No. 437, Nevada.



Mean Magnetic Declination 17 1/4° E.

5.64° 05' W.
35.72
U.S.C. & G.S.
IRON ROCK

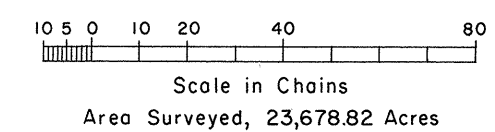
UNITED STATES DEPARTMENT OF THE INTERIOR
BUREAU OF LAND MANAGEMENT
Washington, D. C. October 2, 1968

This plat is strictly conformable to the approved field notes, and the survey, having been correctly executed in accordance with the requirements of law and the regulations of this Bureau, is hereby accepted.

For the Director

R.E. Brown

T. 16 N., R. 36 E.
T. 15 N.
Latitude 39° 11' 53.6" N.
Longitude 117° 52' 06.1" W.
Chief, Division of Engineering



OFFICIALLY FILED
NEVADA LAND OFFICE
10:00 AM Dec 16, 1968

T. 16 N., R. 36 E