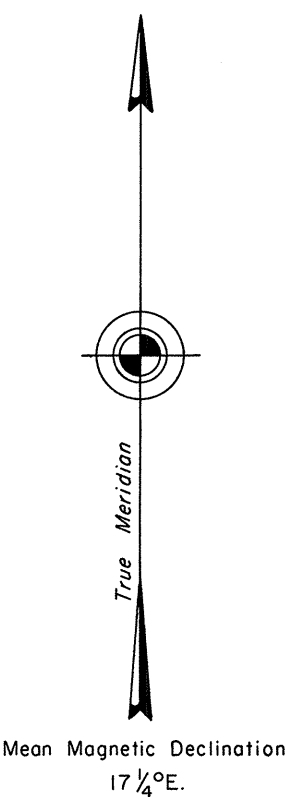
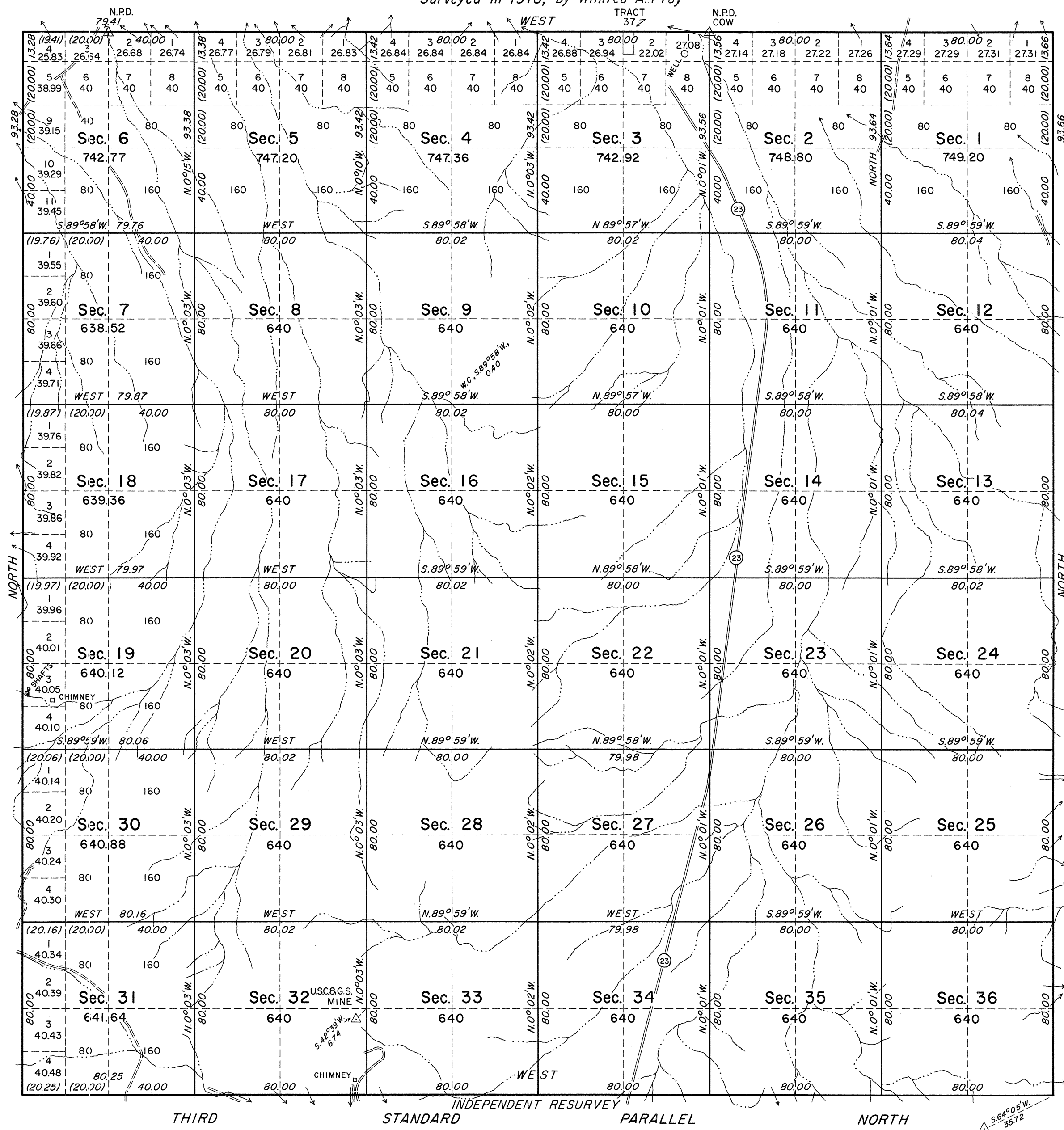


TOWNSHIP 16 NORTH, RANGE 35 EAST, OF THE MOUNT DIABLO MERIDIAN, NEVADA

Surveyed in 1916, by Winfred A. Pray



History of the earlier surveys is contained in the field notes.

This plat represents the independent resurvey of the Third Standard Parallel North, through Range 35 East, and, the survey of the west boundary and the subdivisional lines of T. 16 N., R. 35 E., Mount Diablo Meridian, Nevada.

This survey was executed by John D. Sorensen, Cadastral Surveyor, August 24, 1966, to September 21, 1966, under Special Instructions dated August 9, 1966, for Group No. 441, Nevada.

Surveyed in 1966, by John D. Sorensen

UNITED STATES DEPARTMENT OF THE INTERIOR
BUREAU OF LAND MANAGEMENT
Washington, D. C. October 2, 1968

This plat is strictly conformable to the approved field notes, and the survey, having been correctly executed in accordance with the requirements of law and the regulations of this Bureau, is hereby accepted.

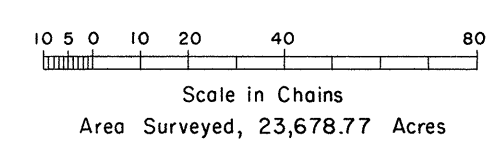
For the Director

R.E. Brown

Chief, Division of Engineering

Latitude 39°11'53.6" N.
Longitude 117°58'48.4" W.

U.S.C.G.S.
IRON ROCK



OFFICIALLY FILED
NEVADA LAND OFFICE
10:00 AM Dec 14, 1968

T. 16 North, Range 35 East