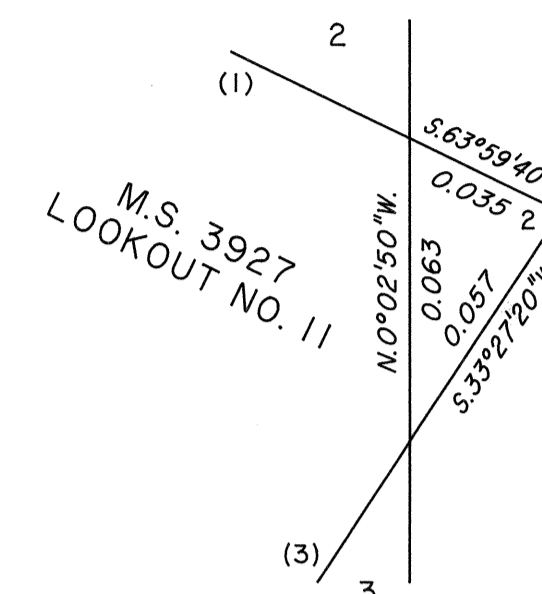
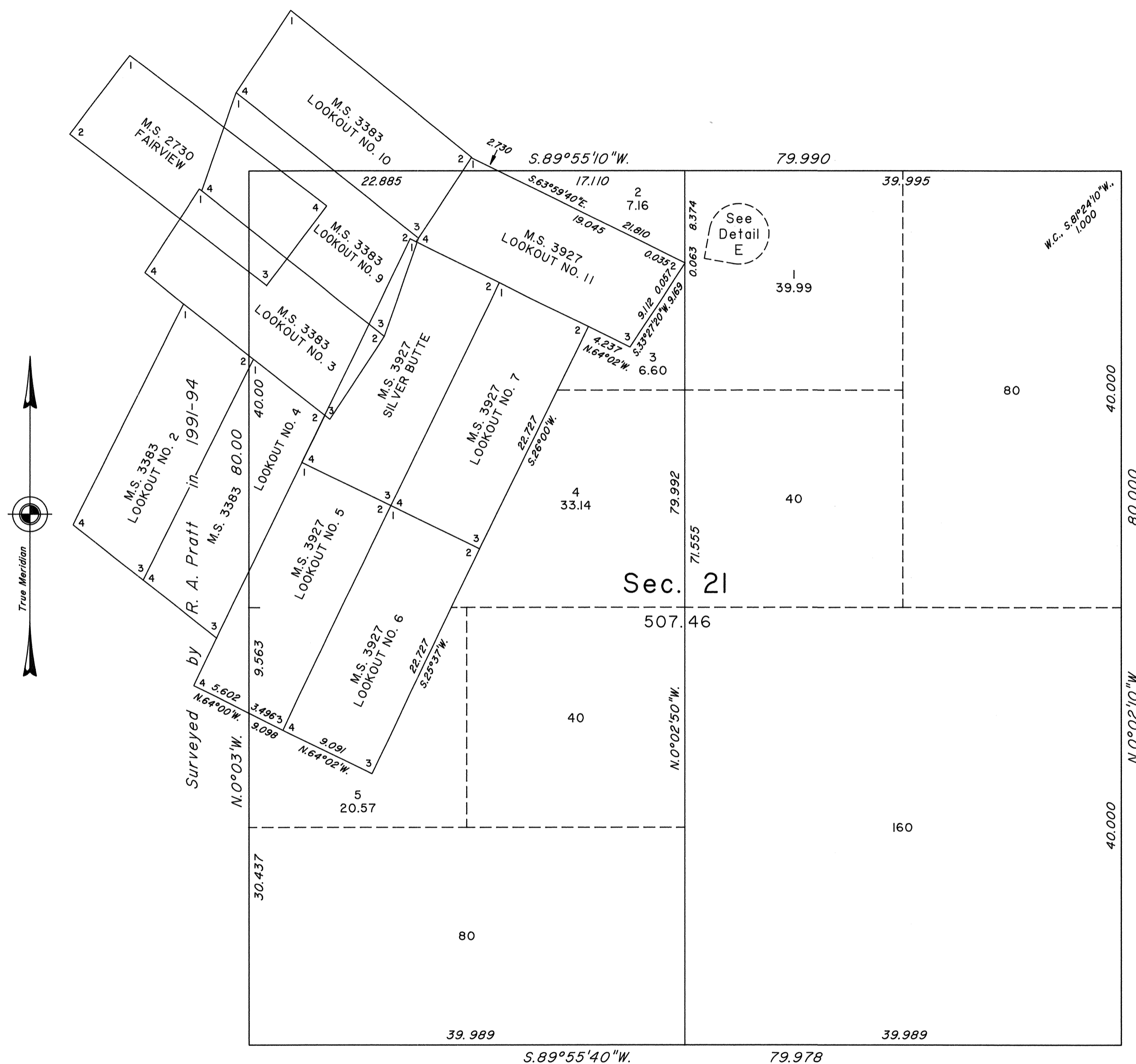


TOWNSHIP 16 NORTH, RANGE 34 EAST, OF THE MOUNT DIABLO MERIDIAN, NEVADA

ENLARGED DIAGRAM OF SECTION 21

DETAIL E
Not to Scale



Reference should be made to Sheet No. 1 for survey information.

Unless otherwise indicated in the field notes, all courses and distances shown on the plat along the perimeter of the mineral segregation areas, were taken or computed from the appropriate Mineral Survey record.

UNITED STATES DEPARTMENT OF THE INTERIOR
BUREAU OF LAND MANAGEMENT

Reno, Nevada June 18, 2002

This plat is strictly conformable to the approved field notes, and the survey, having been correctly executed in accordance with the requirements of law and the regulations of this Bureau, is hereby accepted.

For the Director

Robert M. Scurry

Chief Cadastral Surveyor, Nevada

A graphical scale bar labeled "Scale in Chains". The bar has markings at 10, 5, 0, 5, 10, 20, and 30. The segment from 0 to 10 is divided into 10 equal parts, each representing 1 chain. The segment from 10 to 20 is divided into 2 equal parts, each representing 10 chains. The segment from 20 to 30 is divided into 1 equal part, representing 10 chains.

T.16N., R.34E., M.D.M.