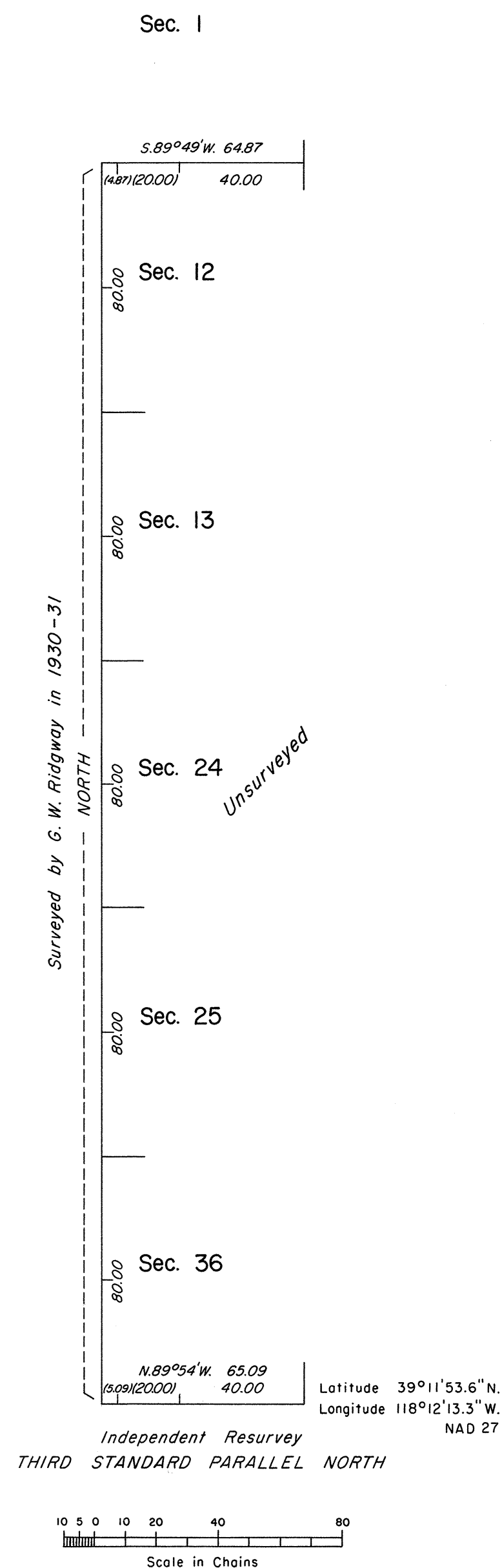
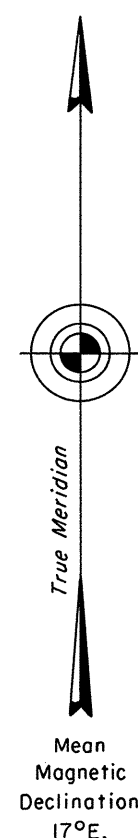


TOWNSHIP 16 NORTH, RANGE 33 1/2 EAST, OF THE MOUNT DIABLO MERIDIAN, NEVADA

INDEPENDENT RESURVEY AND SURVEY



A history of surveys is contained in the field notes.

An independent resurvey of the Third Standard Parallel North, through a portion of Range 34 East, and the survey of a portion of the subdivisional lines and a portion of the Lahontan Valley Navy Bombing Range Boundary, and the dependent resurvey of a portion of Mineral Survey Nos. 2664 and 3206, Township 16 North, Range 34 East, were executed concurrently under this same Group.

This plat represents the independent resurvey of the Third Standard Parallel North, through Range 33 1/2 East, and the survey of a portion of the subdivisional lines of Township 16 North, Range 33 1/2 East, Mount Diablo Meridian, Nevada.

Survey executed by Robert A. Pratt, Cadastral Surveyor, beginning February 22, 1991, and completed May 10, 1991, pursuant to Special Instructions dated February 11, 1991, for Group No. 695, Nevada.

UNITED STATES DEPARTMENT OF THE INTERIOR
BUREAU OF LAND MANAGEMENT

Reno, Nevada January 19, 1995

This plat is strictly conformable to the approved field notes, and the survey, having been correctly executed in accordance with the requirements of law and the regulations of this Bureau, is hereby accepted.

For the Director

John S. Parrish

Chief Cadastral Surveyor, Nevada