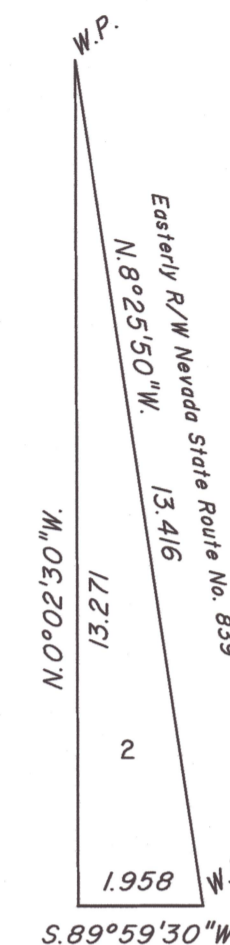
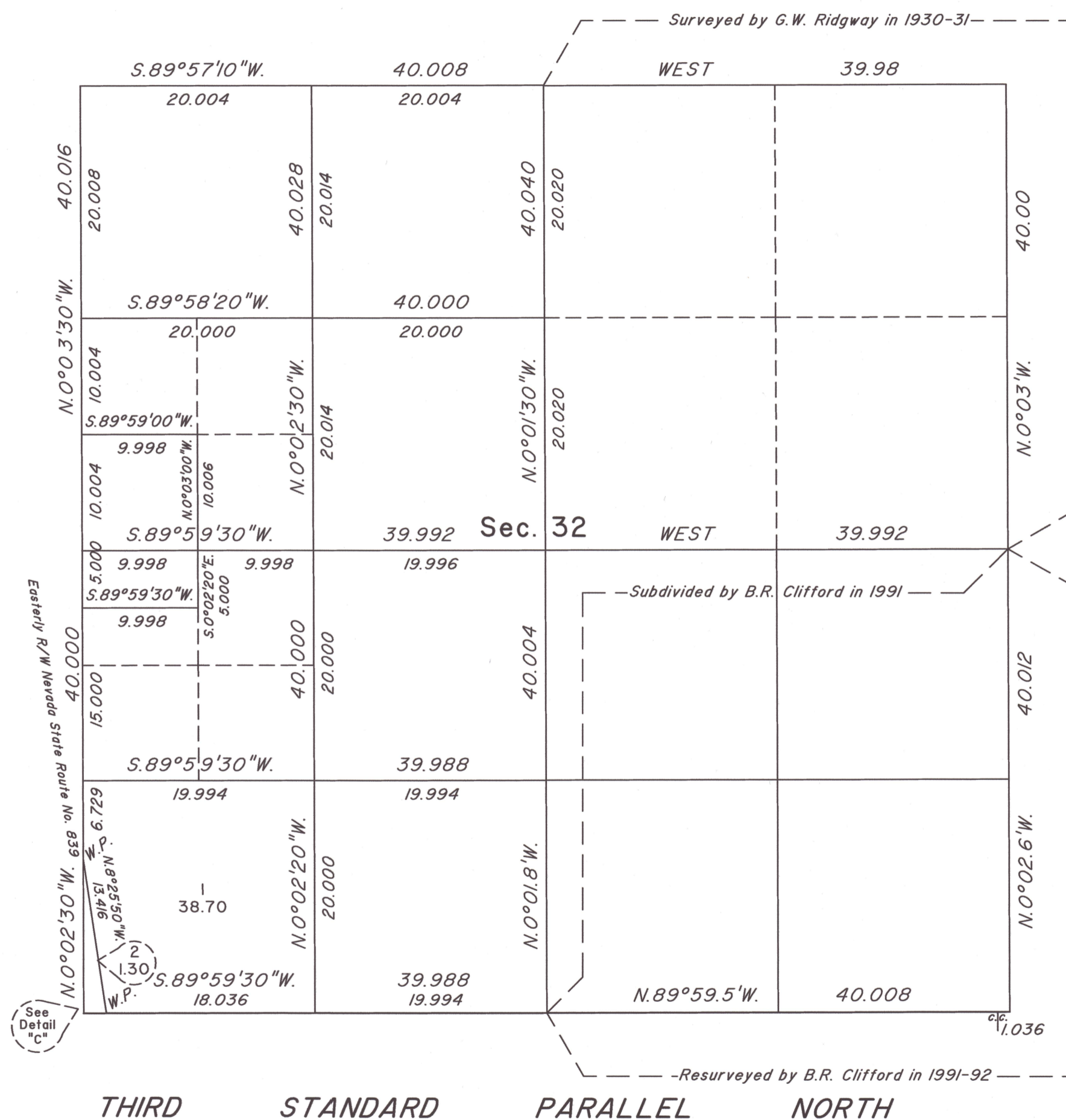


TOWNSHIP 16 NORTH, RANGE 33 EAST, OF THE MOUNT DIABLO MERIDIAN, NEVADA

ENLARGED DIAGRAM OF SECTION 32

DETAIL "C"  
Not to Scale

OFFICIALLY FILED  
NEVADA STATE OFFICE  
at 10:00 AM on APR 15 2026



Reference should be made to Sheet No. 1 for survey information.

UNITED STATES DEPARTMENT OF THE INTERIOR  
BUREAU OF LAND MANAGEMENT

Reno, Nevada March 27, 2026

This plat is strictly conformable to the approved field notes, and the survey, having been correctly executed in accordance with the requirements of law and the regulations of this Bureau, is hereby accepted.

For the Director

*Clarence D. Strickland*

Chief Cadastral Surveyor for Nevada

