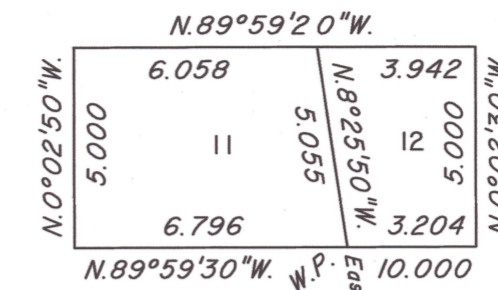


TOWNSHIP 16 NORTH, RANGE 33 EAST, OF THE MOUNT DIABLO MERIDIAN, NEVADA

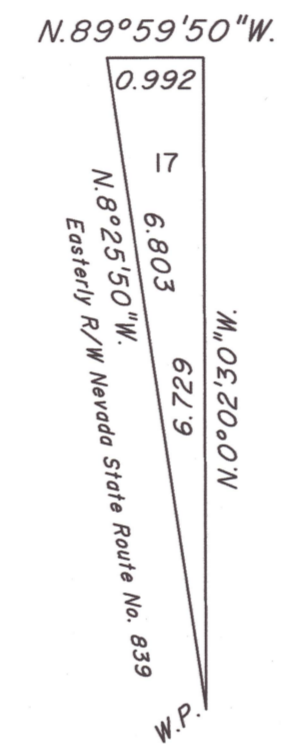
ENLARGED DIAGRAM OF SECTION 31

OFFICIALLY FILED
NEVADA STATE OFFICE
at 10:00 AM on
APR 15 2026

Detail "A"
Not to Scale



Detail "B"
Not to Scale



Reference should be made to Sheet No. 1 for survey information.

UNITED STATES DEPARTMENT OF THE INTERIOR
BUREAU OF LAND MANAGEMENT

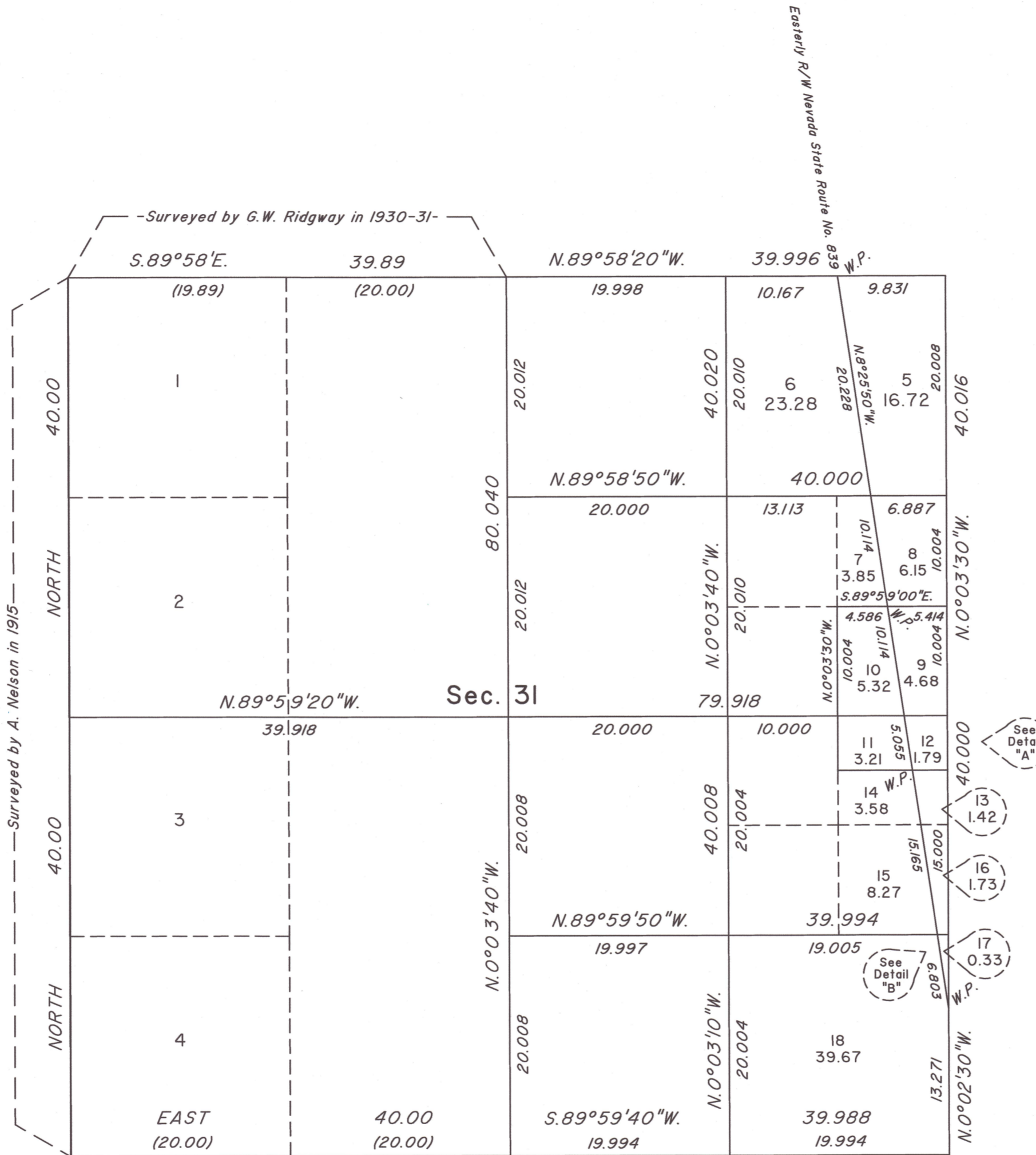
Reno, Nevada March 27, 2026

This plat is strictly conformable to the approved field notes, and the survey, having been correctly executed in accordance with the requirements of law and the regulations of this Bureau, is hereby accepted.

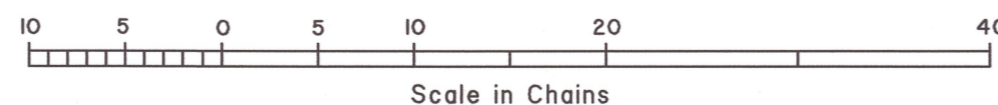
For the Director

Clarence D. Strickland

Chief Cadastral Surveyor for Nevada



THIRD STANDARD PARALLEL NORTH



-Surveyed by G.W. Ridgway in 1930-31-

Surveyed by A. Nelson in 1915

Resurveyed by G.W. Ridgway in 1930-31

C.C.
R. 32 E., R. 33 E.
T. 15 N.

RPM

T.16N., R.33E., M.D.M.