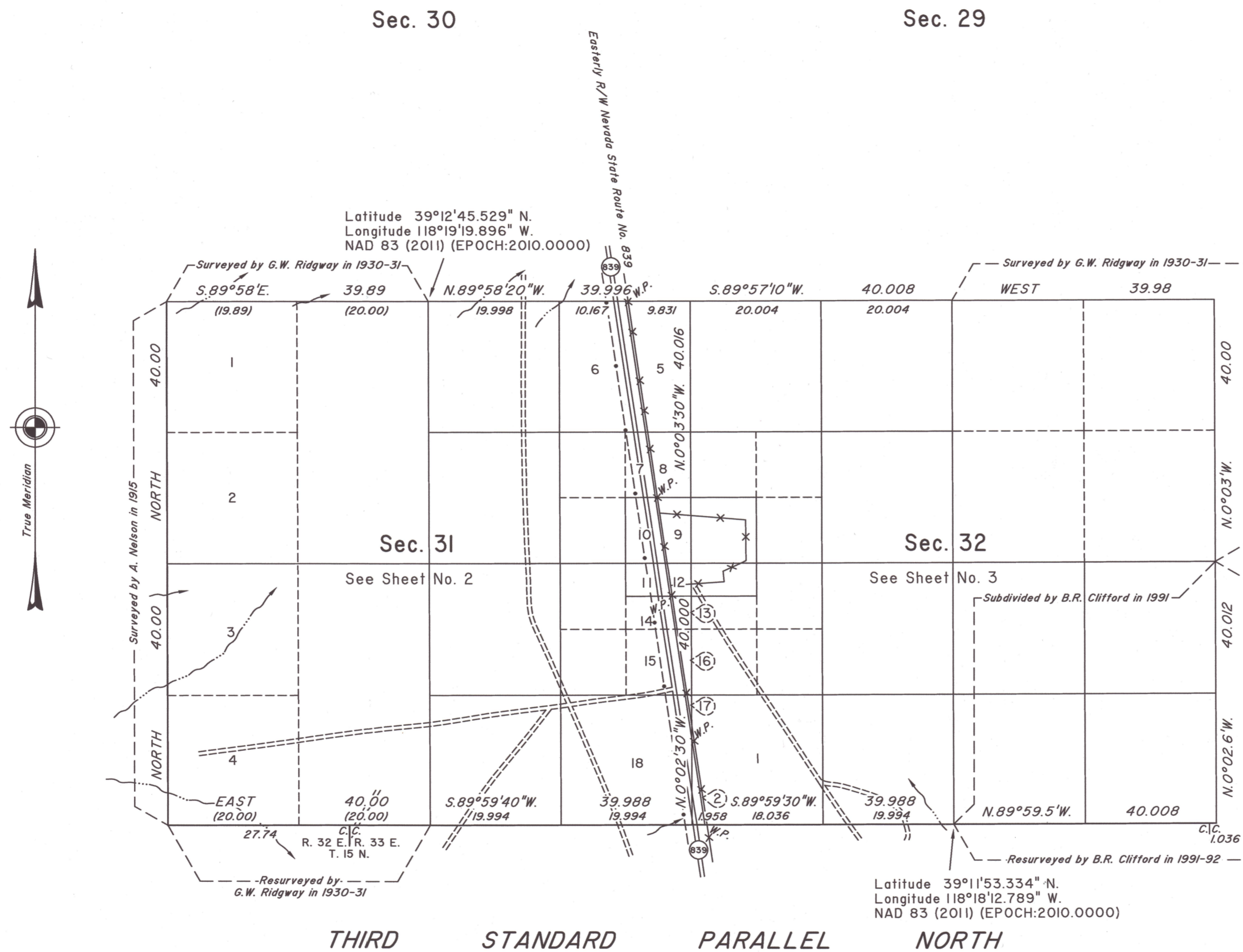


TOWNSHIP 16 NORTH, RANGE 33 EAST, OF THE MOUNT DIABLO MERIDIAN, NEVADA
DEPENDENT RESURVEY, SUBDIVISION, AND METES-AND-BOUNDS SURVEY

OFFICIALLY FILED
NEVADA STATE OFFICE
at 10:00 AM on
APR 15 2026



A history of surveys is contained in the field notes.

This plat, in three sheets, represents the dependent resurvey of the Third Standard Parallel North through a portion of Range 33 East, a portion of the subdivisional lines, and a portion of the subdivision-of-section lines of section 32, designed to restore the corners in their true original locations according to the best available evidence; the subdivision of section 31, the further subdivision of section 32, and a metes-and-bounds survey of the easterly right-of-way line of Nevada State Route No. 839 through sections 31 and 32, Township 16 North, Range 33 East, Mount Diablo Meridian, Nevada.

For surveyed lines not showing bearings and distances, refer to the official 1995 survey.

Except as indicated hereon, the lottings and areas are as shown on the plat approved June 21, 1935 and accepted February 6, 1936.

Survey executed by Kelly R. Totten, Cadastral Surveyor, beginning November 13, 2024 and completed August 20, 2025, pursuant to Special Instructions dated October 9, 2024, for Group No. 1020, Nevada.

UNITED STATES DEPARTMENT OF THE INTERIOR
BUREAU OF LAND MANAGEMENT

Reno, Nevada March 27, 2026

This plat is strictly conformable to the approved field notes, and the survey, having been correctly executed in accordance with the requirements of law and the regulations of this Bureau, is hereby accepted.

For the Director

Clarence D. Strickland

Chief Cadastral Surveyor for Nevada

RPM

T.16N., R.33E., M.D.M.