

TOWNSHIP 16 NORTH, RANGE 33 EAST, OF THE MOUNT DIABLO MERIDIAN, NEVADA  
DEPENDENT RESURVEY AND SUBDIVISIONS

Surveyed by

G.W. Ridgway

in 1930-31

Sec. 29

Sec. 28

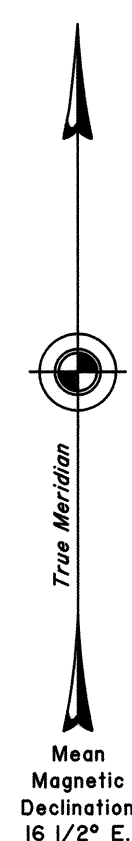
A history of surveys is contained in the field notes.

The Third Standard Parallel North, through a portion of Range 33 East, was dependently resurveyed concurrently under this same Group.

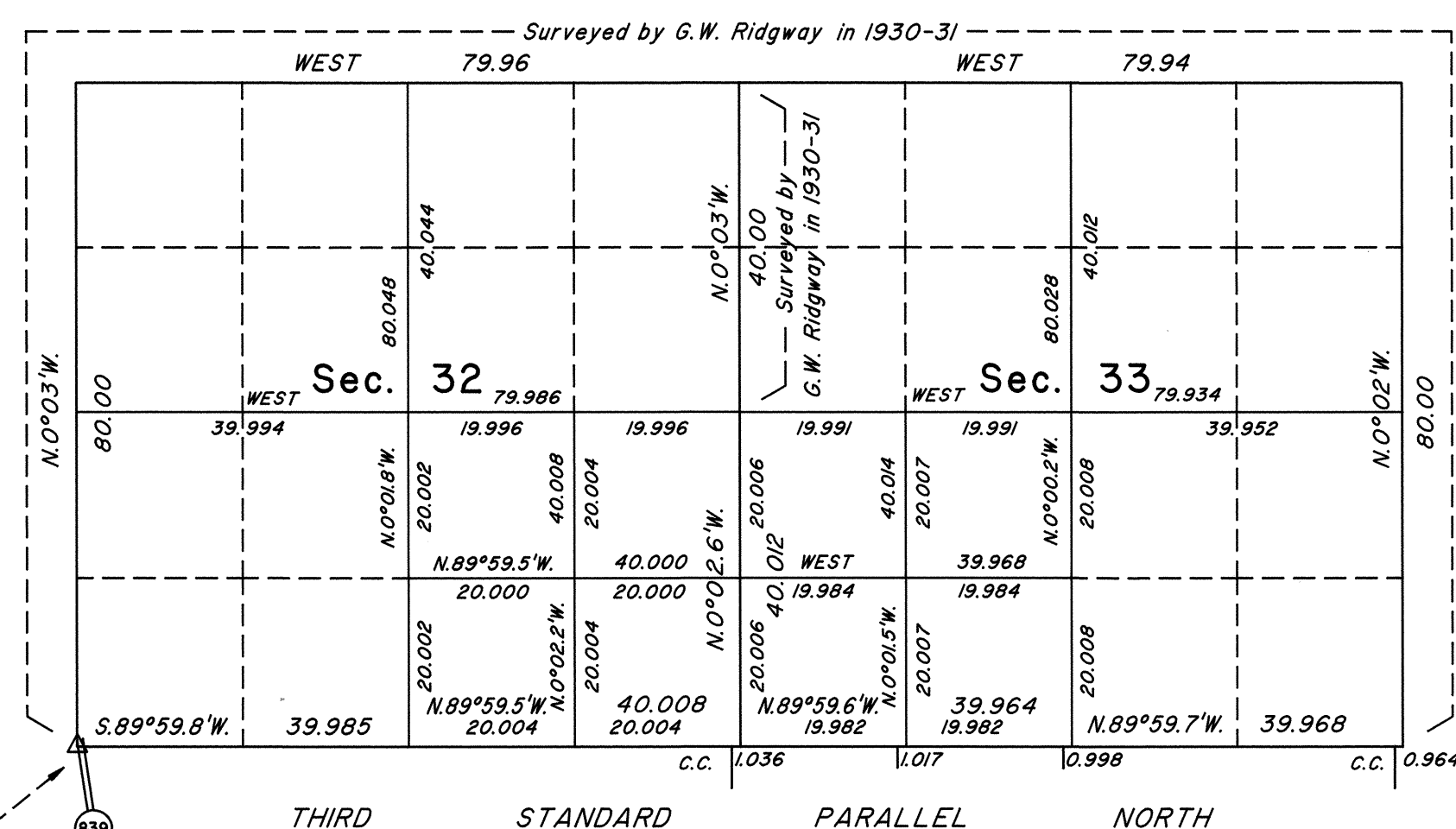
This plat represents the dependent resurvey of a portion of the subdivisional lines, designed to restore the corners in their true original locations according to the best available evidence, and the subdivision of sections 32 and 33, Township 16 North, Range 33 East, Mount Diablo Meridian, Nevada.

Areas are as shown on the plat approved June 21, 1935 and accepted February 6, 1936.

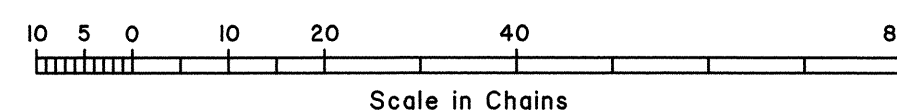
Survey executed by Brock R. Clifford, Cadastral Surveyor, beginning October 30, 1991, and completed November 2, 1991, pursuant to Special Instructions dated October 24, 1991, for Group No. 714, Nevada.



Sec. 31



"T16N R33E  
SEC 31  
SE CORNER"  
U.S.G.S.  
Latitude 39°11'53.605"N.  
Longitude 118°18'42.808"W.  
NAD 27



Sec. 34

UNITED STATES DEPARTMENT OF THE INTERIOR  
BUREAU OF LAND MANAGEMENT

Reno, Nevada April 27, 1995

This plat is strictly conformable to the approved field notes, and the survey, having been correctly executed in accordance with the requirements of law and the regulations of this Bureau, is hereby accepted.

For the Director

Chief Cadastral Surveyor, Nevada