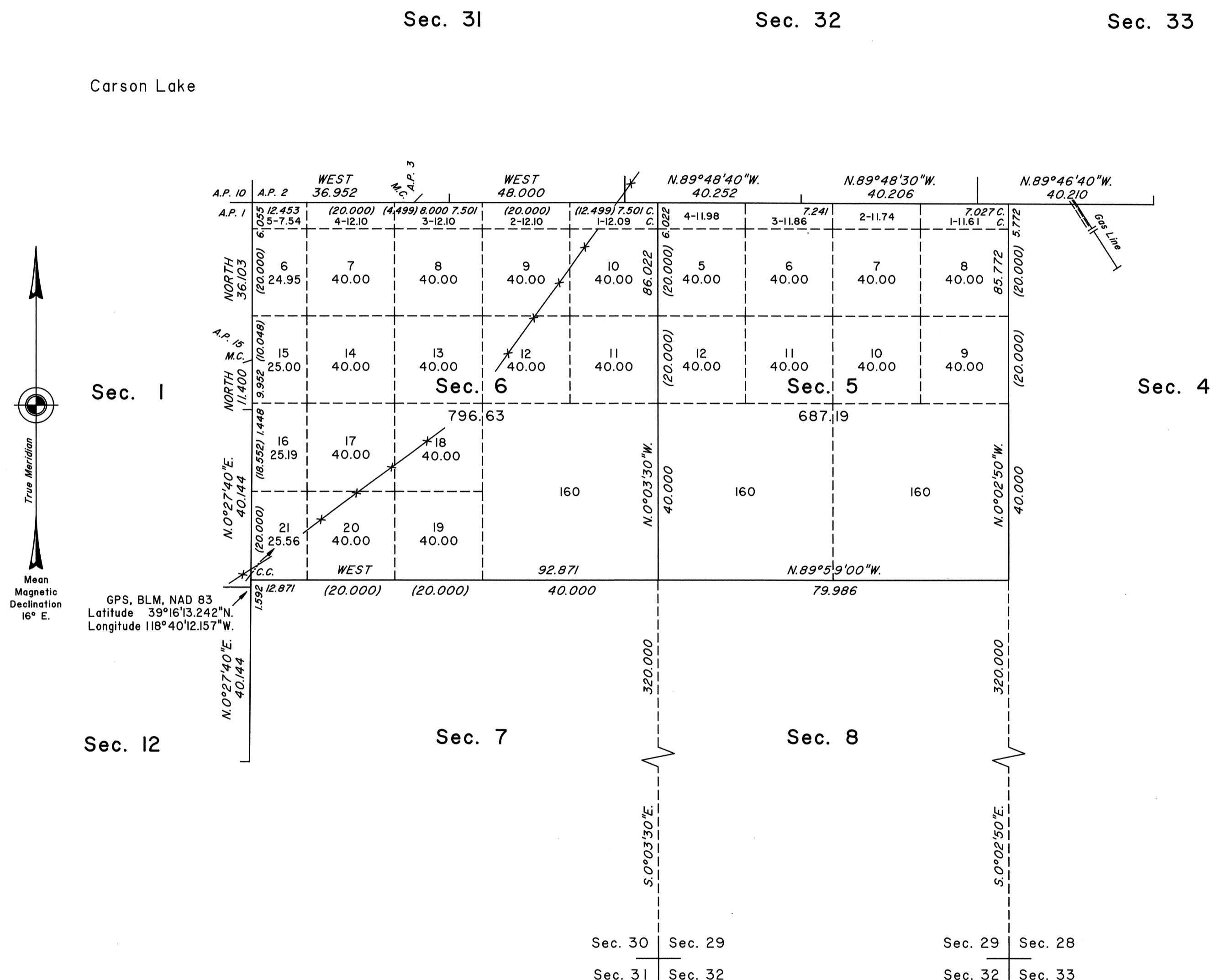


# TOWNSHIP 16 NORTH, RANGE 30 EAST, OF THE MOUNT DIABLO MERIDIAN, NEVADA



A history of surveys is contained in the field notes.

The dependent resurvey of a portion of the south boundary and the completion survey of the south boundary of T.17N., R.30E., and the dependent resurvey of a portion of the east boundary and the survey of a portion of the east boundary of T.16N., R.29E., were executed concurrently under this same group.

This plat represents the survey of a portion of the subdivisional lines of Township 16 North, Range 30 East, Mount Diablo Meridian, Nevada.

Survey executed by Brock R. Clifford and Thomas E. Casinger, Cadastral Surveyors, beginning July 7, 1996, and completed July 2, 1998, pursuant to Special Instructions dated June 10, 1996, and Supplemental Special Instructions dated April 30, 1998, for Group No. 763, Nevada.

UNITED STATES DEPARTMENT OF THE INTERIOR  
BUREAU OF LAND MANAGEMENT

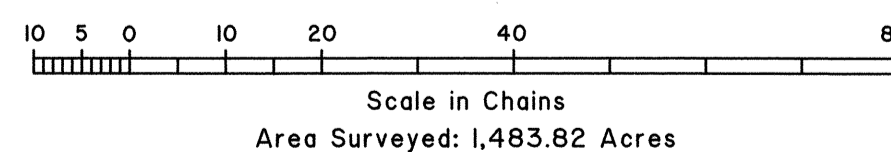
Reno, Nevada November 23, 1998

This plat is strictly conformable to the approved field notes, and the survey, having been correctly executed in accordance with the requirements of law and the regulations of this Bureau, is hereby accepted.

For the Director

*David J. Clark*

Chief Cadastral Surveyor, Nevada



T.16N., R.30E., M.D.M.