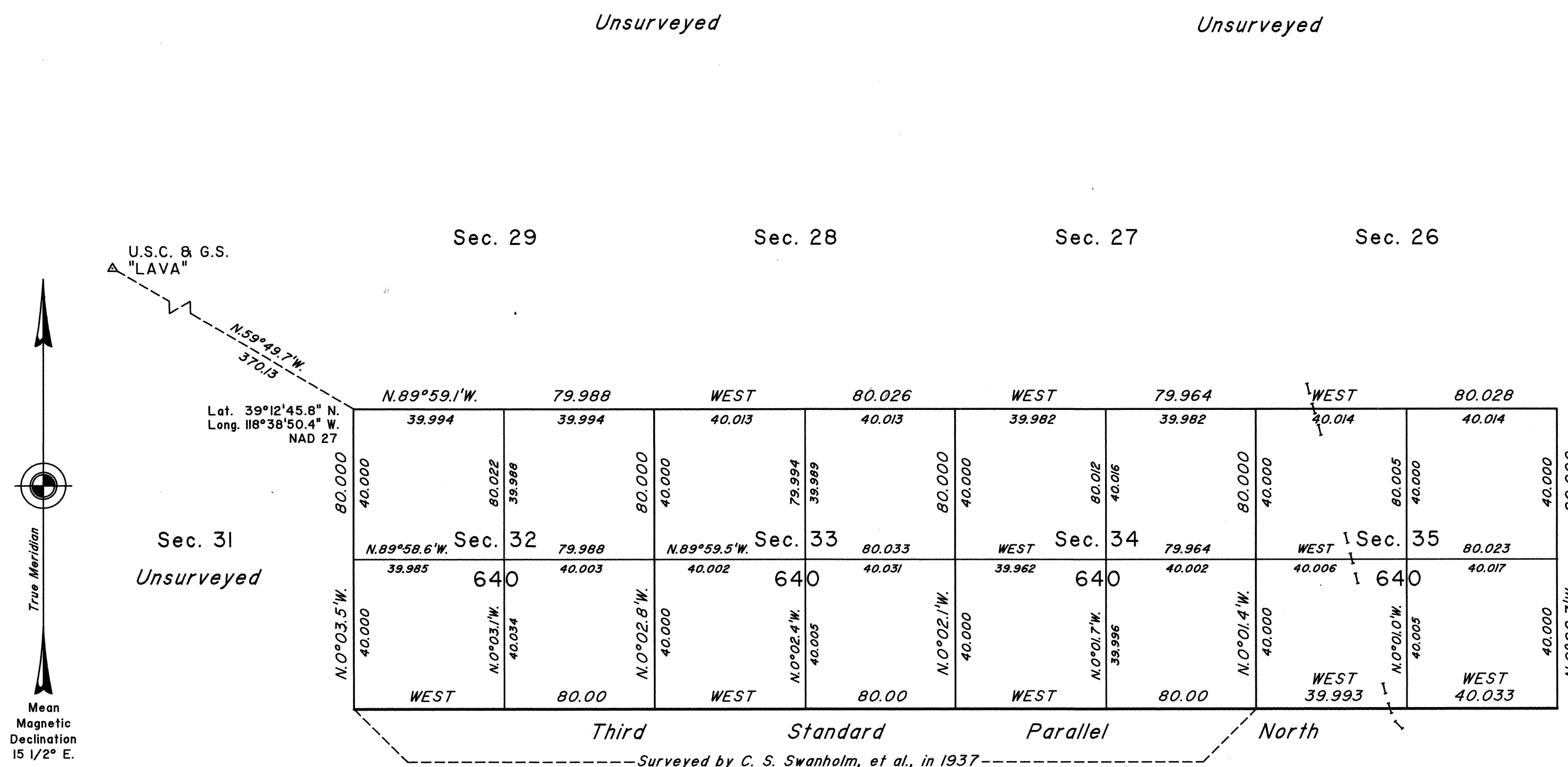


TOWNSHIP 16 NORTH, RANGE 30 EAST, OF THE MOUNT DIABLO MERIDIAN, NEVADA

SURVEY AND SUBDIVISIONS



A history of surveys is contained in the field notes.

The Third Standard Parallel North, through a portion of Range 30 East, was dependently resurveyed concurrently under this same Group.

This plat represents the survey of a portion of the subdivisional lines, and the subdivision of sections 32, 33, 34 and 35, Township 16 North, Range 30 East, Mount Diablo Meridian, Nevada.

Survey executed by Brock R. Clifford, Cadastral Surveyor, beginning November 23, 1991, and completed June 30, 1995, pursuant to Special Instructions dated October 22, 1991, for Group No. 711, Nevada.

UNITED STATES DEPARTMENT OF THE INTERIOR
BUREAU OF LAND MANAGEMENT

Reno, Nevada September 21, 1995

This plat is strictly conformable to the approved field notes, and the survey, having been correctly executed in accordance with the requirements of law and the regulations of this Bureau, is hereby accepted.

For the Director

John S. Parrish
Chief Cadastral Surveyor, Nevada