

TOWNSHIP 16 NORTH, RANGE 29 EAST, OF THE MOUNT DIABLO MERIDIAN, NEVADA  
DEPENDENT RESURVEY AND SURVEY

OFFICIALLY FILED  
NEVADA STATE OFFICE  
at 10:00 AM on Dec. 28, 1998

A history of surveys is contained in the field notes.

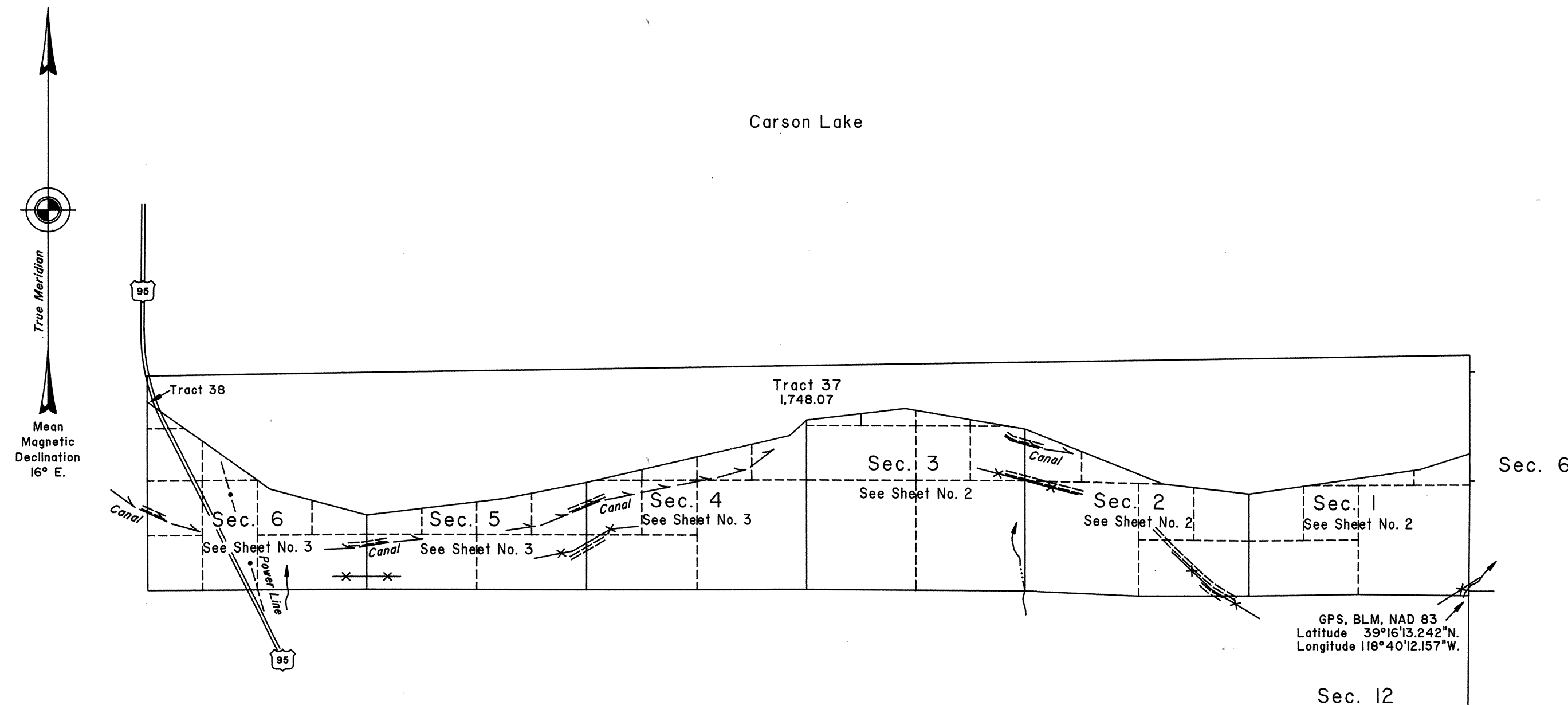
The survey of the south boundary of T.17N., R.29E., and the survey of a portion of the subdivisional lines of T.16N., R.30E., were executed concurrently under this same group.

This plat, in three sheets, represents the dependent resurvey of portions of the east and west boundaries, a portion of the subdivisional lines, and the meanders of Carson Lake designed to restore the corners in their true original locations according to the best available evidence, and the survey of portions of the east and west boundaries, the metes-and-bounds survey of a portion of U.S. Highway No. 95, and the survey of Tracts 37 and 38, Township 16 North, Range 29 East, Mount Diablo Meridian, Nevada.

Except as indicated hereon, the lottings and areas are as shown on the plat approved February 1, 1881.

Survey executed by Brock R. Clifford and Thomas E. Casinger, Cadastral Surveyors, beginning June 12, 1996, and completed June 25, 1998, pursuant to Special Instructions dated June 10, 1996, and Supplemental Special Instructions dated April 30, 1998, for Group No. 763, Nevada.

For enlargement of fractional sections 1, 2 and 3, and a portion of Tract 37; and fractional sections 4, 5 and 6, Tract 38 and a portion of Tract 37, see Sheet No. 2 and Sheet No. 3, respectively.



UNITED STATES DEPARTMENT OF THE INTERIOR  
BUREAU OF LAND MANAGEMENT

Reno, Nevada November 23, 1998

This plat is strictly conformable to the approved field notes, and the survey, having been correctly executed in accordance with the requirements of law and the regulations of this Bureau, is hereby accepted.

For the Director

Chief Cadastral Surveyor, Nevada

10 5 0 10 20 40 80  
Scale in Chains  
Area Surveyed: 1,749.79 Acres