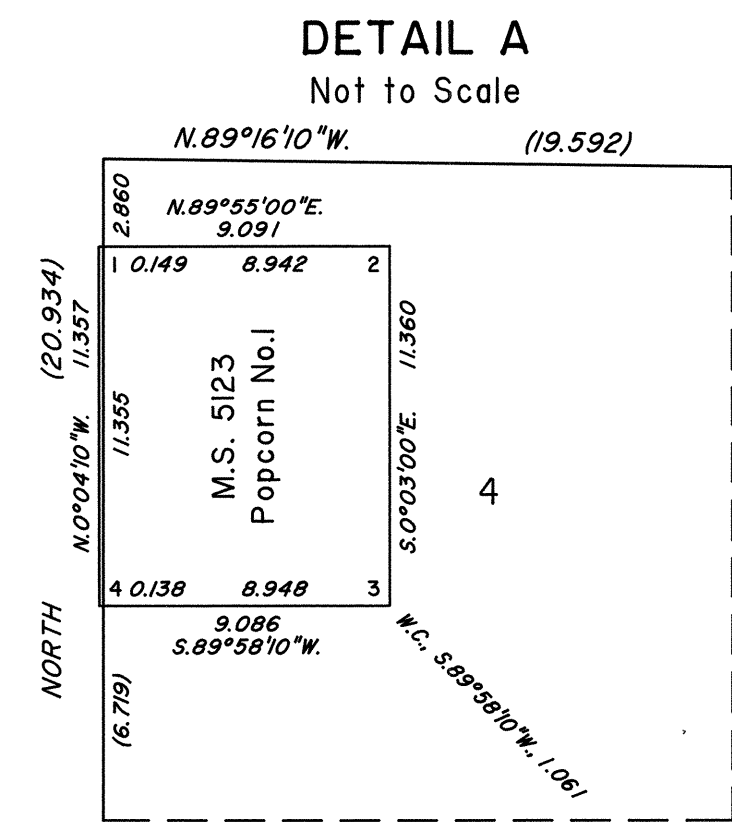
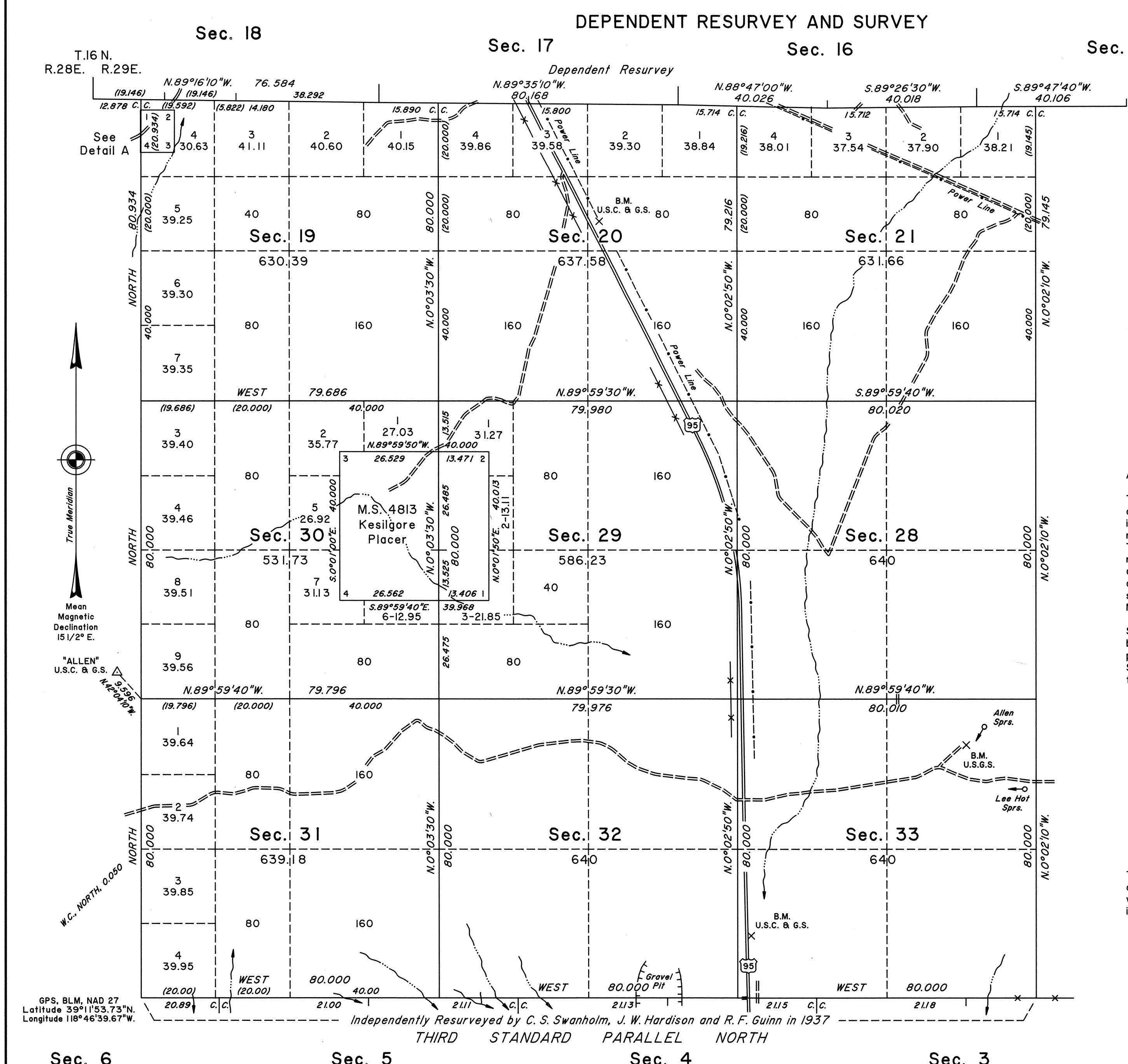


TOWNSHIP 16 NORTH, RANGE 29 EAST, OF THE MOUNT DIABLO MERIDIAN, NEVADA



A history of surveys is contained in the field notes.

This plat represents the dependent resurvey of a portion of the subdivisional lines and Mineral Survey No. 4813 in Township 16 North, Range 29 East; and the dependent resurvey of a portion of Mineral Survey No. 5123 in Townships 16 North, Ranges 28 and 29 East, designed to restore the corners in their true original locations according to the best available evidence, and the survey of a portion of the west boundary and a portion of the subdivisional lines of Township 16 North, Range 29 East, Mount Diablo Meridian, Nevada.

Survey executed by Ronald E. Williams, Cadastral Surveyor, beginning March 7, 1996, and completed October 3, 1996, pursuant to Special Instructions dated March 6, 1996, and Supplemental Special Instructions dated September 23, 1996, for Group No. 759, Nevada.

UNITED STATES DEPARTMENT OF THE INTERIOR
BUREAU OF LAND MANAGEMENT

Reno, Nevada March 18, 1997

This plat is strictly conformable to the approved field notes, and the survey, having been correctly executed in accordance with the requirements of law and the regulations of this Bureau, is hereby accepted.

For the Director

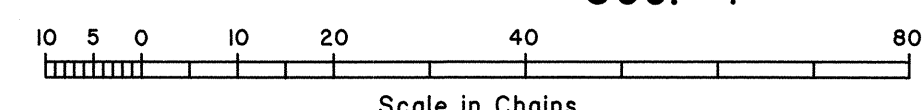
Robert H. Thompson

Acting Chief Cadastral Surveyor, Nevada

GPS, BLM, NAD 27
Latitude 39°11'53.73"N
Longitude 118°46'39.67"W

Independently Resurveyed by C. S. Swanholm, J. W. Hardison and R. F. Guinn in 1937

THIRD STANDARD PARALLEL NORTH



OFFICIALLY FILED
NEVADA STATE OFFICE
at 10:00 AM on May 5, 1997