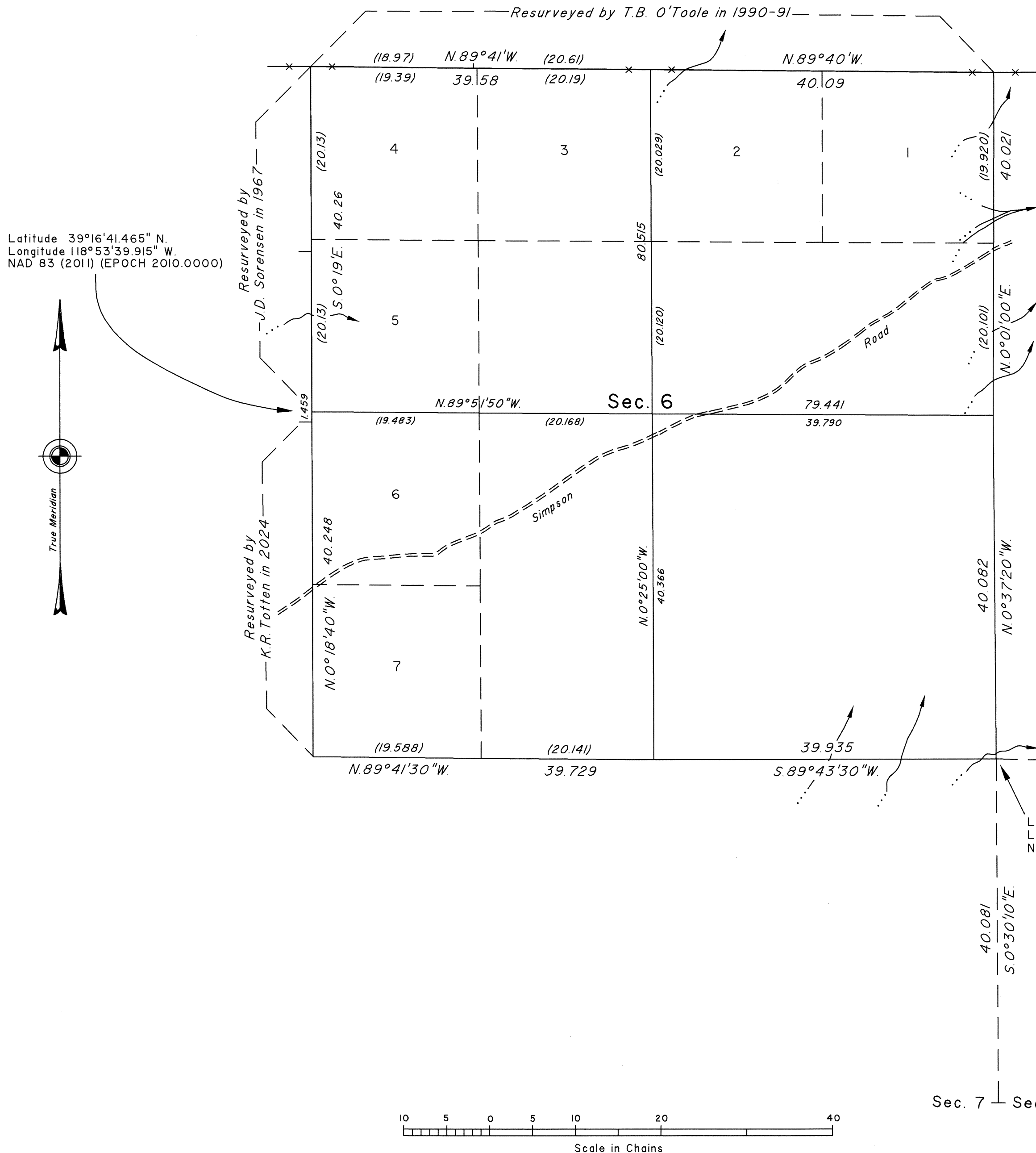


TOWNSHIP 16 NORTH, RANGE 28 EAST, OF THE MOUNT DIABLO MERIDIAN, NEVADA
DEPENDENT RESURVEY AND SUBDIVISION



A history of surveys is contained in the field notes.

This plat represents the dependent resurvey of a portion of the subdivisional lines of Township 16 North, Range 28 East, designed to restore the corners in their true original locations according to the best available evidence, and the subdivision of section 6, Township 16 North, Range 28 East, Mount Diablo Meridian, Nevada.

Except as indicated hereon, the lottings and areas are as shown on the plat approved February 1, 1881.

Survey executed by Brandon K. Grace, Supervisory Cadastral Surveyor, and Robert S. Hollis, Surveying Technician, beginning February 11, 2024, and completed February 14, 2024, pursuant to Special Instructions dated February 7, 2024, for Group No. 1012, Nevada.

UNITED STATES DEPARTMENT OF THE INTERIOR
BUREAU OF LAND MANAGEMENT

Reno, Nevada December 19, 2024

This plat is strictly conformable to the approved field notes, and the survey, having been correctly executed in accordance with the requirements of law and the regulations of this Bureau, is hereby accepted.

For the Director

Clarence D. Strickland

Chief Cadastral Surveyor for Nevada