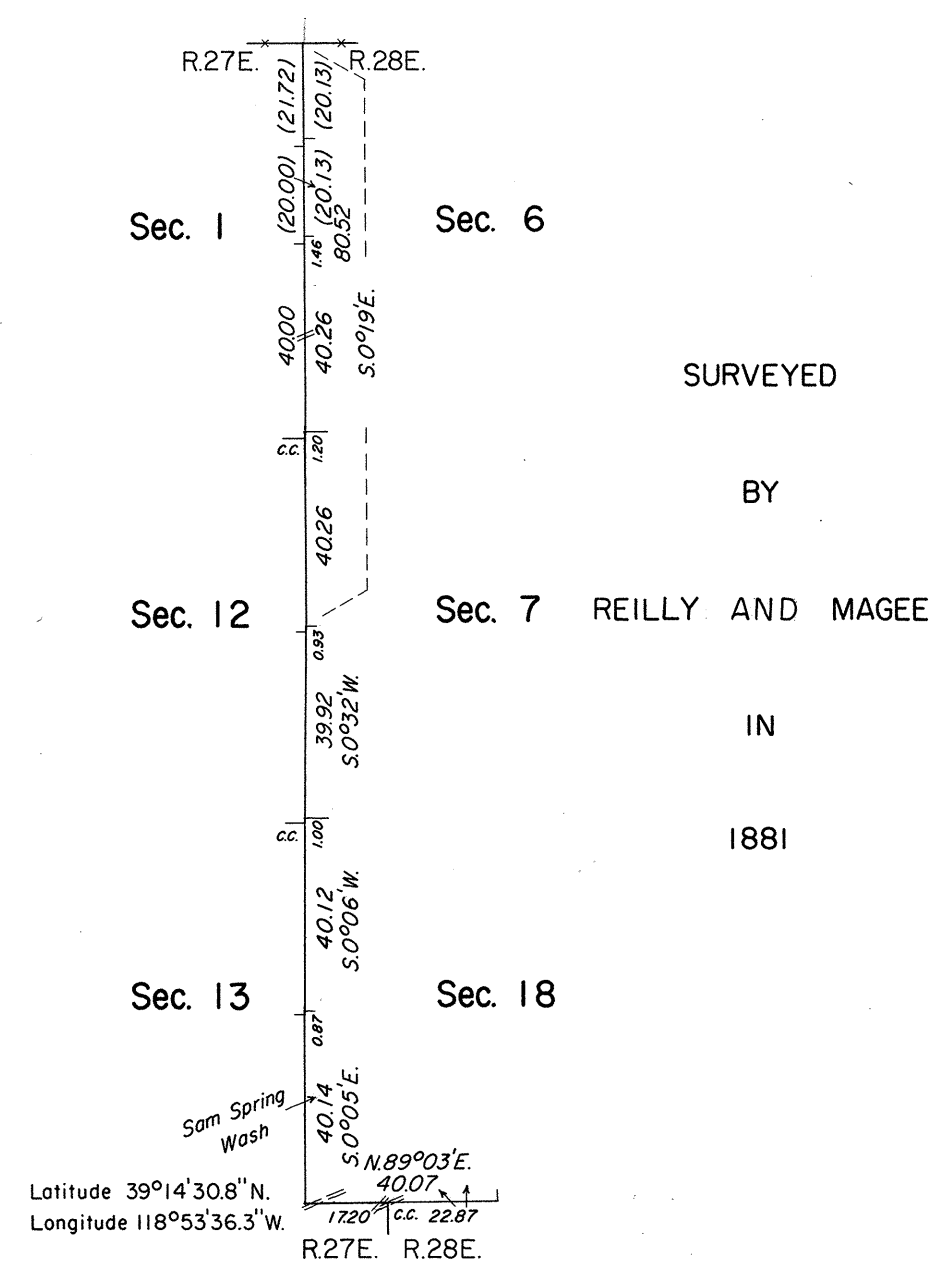
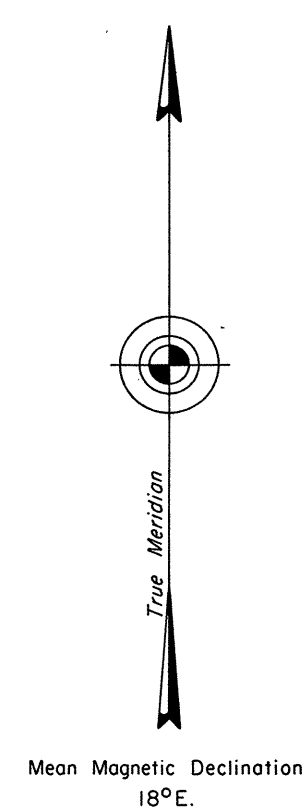


Churchill

ORIGINAL

TOWNSHIP 16 NORTH, RANGE 28 EAST, OF THE MOUNT DIABLO MERIDIAN, NEVADA
DEPENDENT RESURVEY

OFFICIALLY FILED
NEVADA LAND OFFICE
10:00 AM May 24, 1971



A history of the previous surveys is contained in the field notes.

This plat represents a dependent resurvey of a portion of the west boundary and a portion of the subdivisional lines of T. 16 N., R. 28 E., designed to restore the corners in their true original locations according to the best available evidence.

These surveys were executed by John D. Sorensen, Cadastral Surveyor, May 22, 1967, to May 31, 1967, under Special Instructions dated April 11, 1967, for Group No. 447, Nevada.

SURVEYED

BY

REILLY AND MAGEE

IN

1881

UNITED STATES DEPARTMENT OF THE INTERIOR
BUREAU OF LAND MANAGEMENT
Washington, D. C. May 3, 1971

This plat is strictly conformable to the approved field notes, and the survey, having been correctly executed in accordance with the requirements of law and the regulations of this Bureau, is hereby accepted.

For the Director

Clark F. Humm

Chief, Division of Cadastral Survey