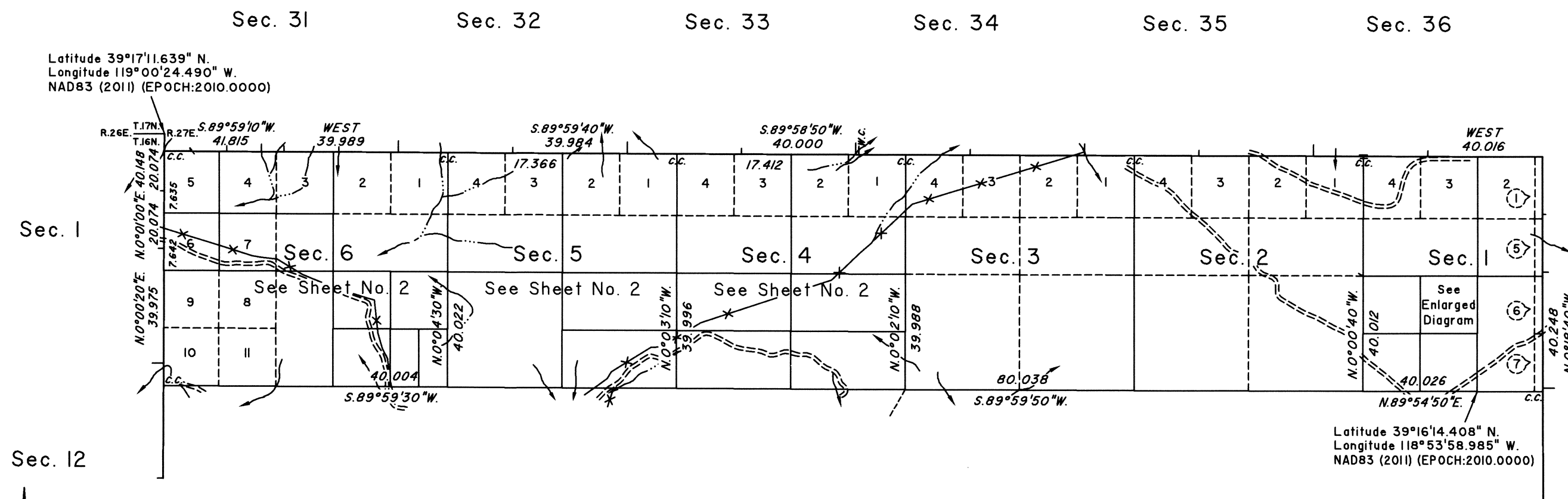
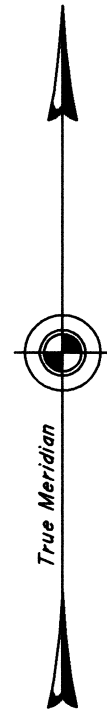


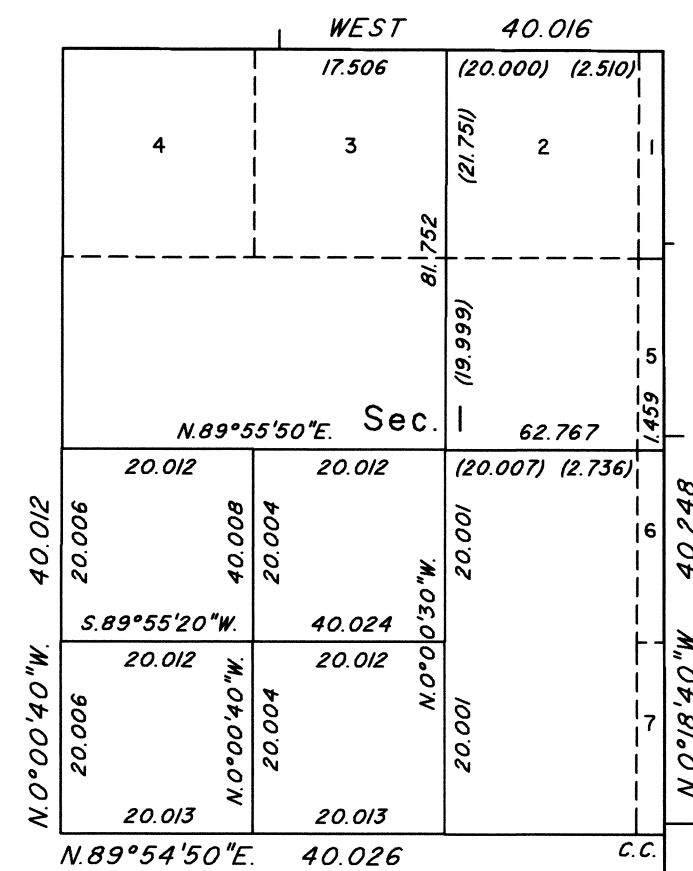
TOWNSHIP 16 NORTH, RANGE 27 EAST, OF THE MOUNT DIABLO MERIDIAN, NEVADA
DEPENDENT RESURVEY AND SUBDIVISION



Sec. 12

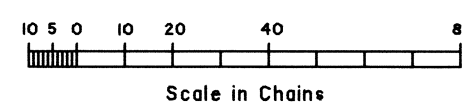
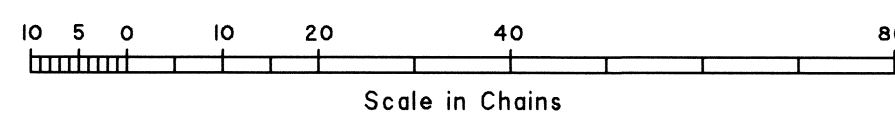


ENLARGED DIAGRAM



Sec. 6

Sec. 7



Sec. 6

Sec. 7

A history of surveys is contained in the field notes.

This plat, in two sheets, represents the dependent resurvey of a portion of the east boundary, Township 16 North, Range 26 East; a portion of the west boundary, Township 16 North, Range 28 East; portions of the south boundary, Township 17 North, Range 27 East; and a portion of the subdivisional lines designed to restore the corners in their true original locations according to the best available evidence, and the subdivision of certain sections, Township 16 North, Range 27 East, Mount Diablo Meridian, Nevada.

Except as indicated hereon, the lottings and areas are as shown on the plat accepted May 3, 1971.

For those surveyed lines not showing bearings and distances, refer to the prior official records.

Survey executed by Kelly R. Totten, Cadastral Surveyor, beginning August 3, 2023 and completed August 4, 2024, pursuant to Special Instructions dated August 1, 2023, for Group No. 1005, Nevada.

UNITED STATES DEPARTMENT OF THE INTERIOR
BUREAU OF LAND MANAGEMENT

Reno, Nevada September 23, 2024

This plat is strictly conformable to the approved field notes, and the survey, having been correctly executed in accordance with the requirements of law and the regulations of this Bureau, is hereby accepted.

For the Director

Clarence D. Strickland
Chief Cadastral Surveyor for Nevada