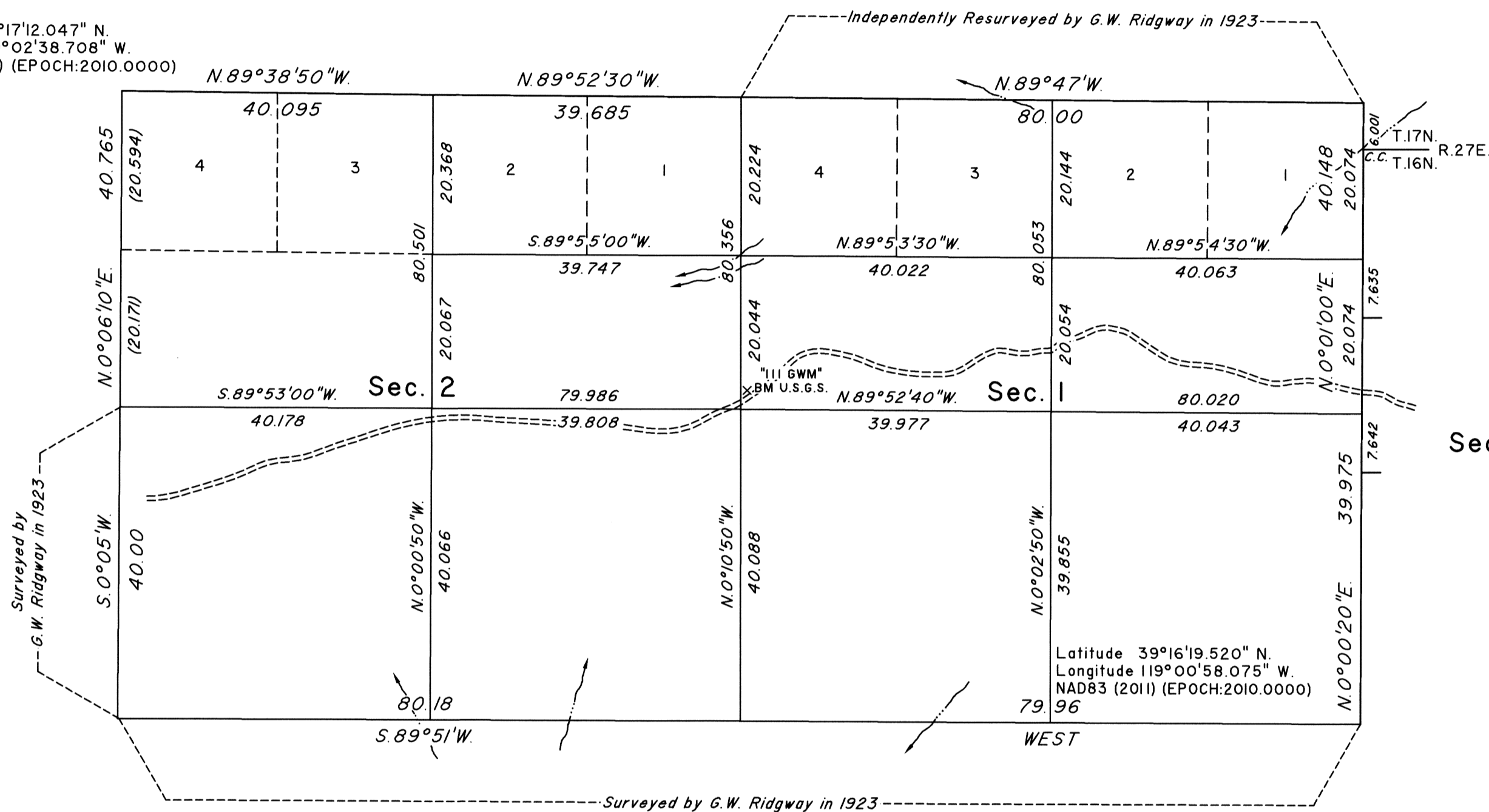


TOWNSHIP 16 NORTH, RANGE 26 EAST, OF THE MOUNT DIABLO MERIDIAN, NEVADA  
DEPENDENT RESURVEY AND SUBDIVISION

Latitude 39°17'12.047" N.  
Longitude 119°02'38.708" W.  
NAD83 (2011) (EPOCH:2010.0000)



Latitude 39°16'19.520" N.  
Longitude 119°00'58.075" W.  
NAD83 (2011) (EPOCH:2010.0000)

A history of surveys is contained in the field notes.  
The dependent resurvey of a portion of the east boundary was executed concurrently under Group No. 1005.  
This plat represents the dependent resurvey of a portion of the north boundary and a portion of the subdivisional lines designed to restore the corners in their true original locations according to the best available evidence, and the subdivision of sections 1 and 2, Township 16 North, Range 26 East, Mount Diablo Meridian, Nevada.  
Except as indicated hereon, the lottings and areas are as shown on the plat approved October 21, 1924.  
Survey executed by Lucas T. Beauchamp, Cadastral Surveyor, beginning September 26, 2023 and completed July 31, 2024, pursuant to Special Instructions dated August 24, 2023, for Group No. 1006, Nevada.

UNITED STATES DEPARTMENT OF THE INTERIOR  
BUREAU OF LAND MANAGEMENT

Reno, Nevada September 23, 2024

This plat is strictly conformable to the approved field notes, and the survey, having been correctly executed in accordance with the requirements of law and the regulations of this Bureau, is hereby accepted.

For the Director

*Clarence D. Strickland*  
Chief Cadastral Surveyor for Nevada

