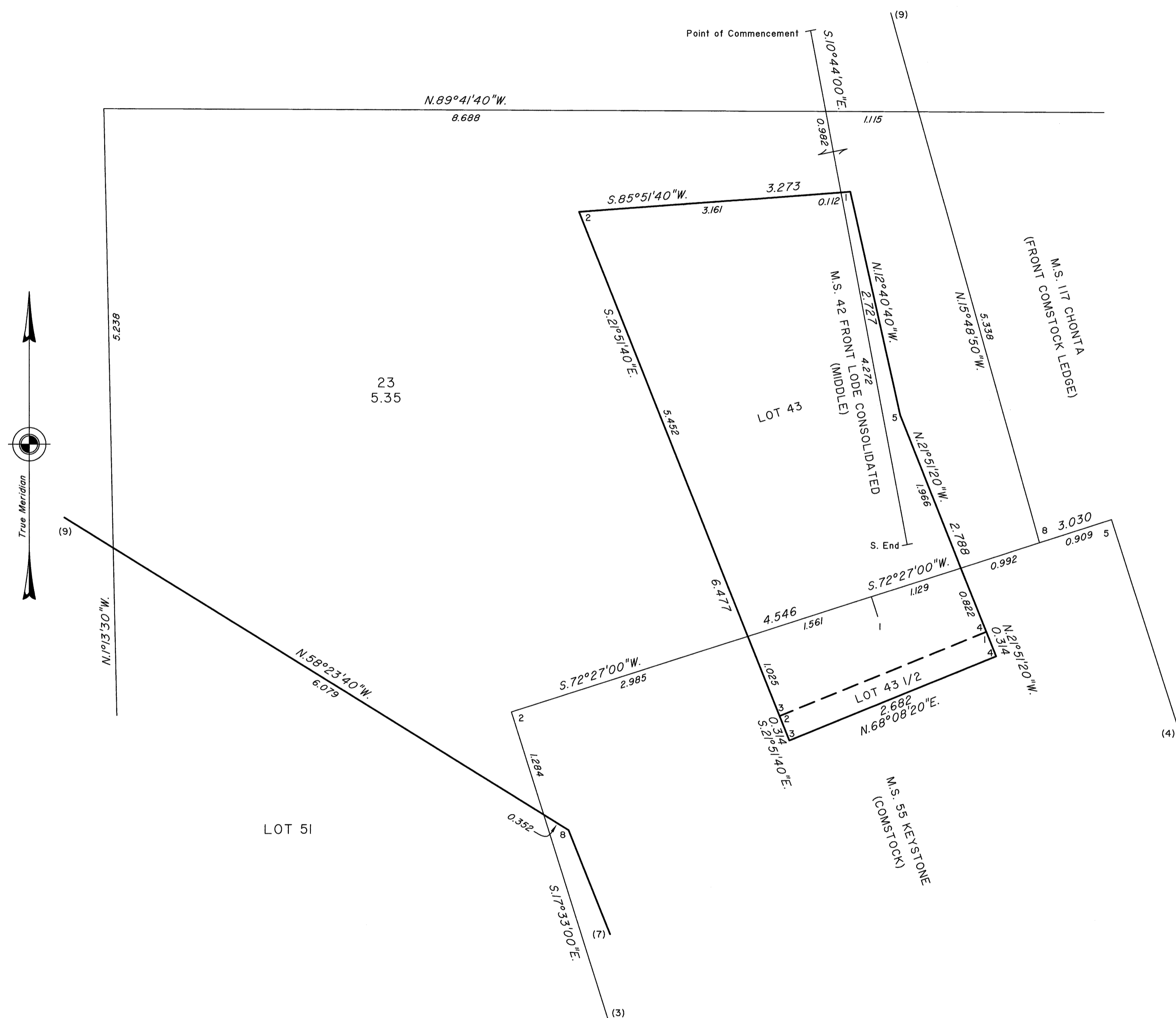


TOWNSHIP 16 NORTH, RANGE 21 EAST, OF THE MOUNT DIABLO MERIDIAN, NEVADA

ENLARGED DIAGRAM

OFFICIALLY FILED  
NEVADA STATE OFFICE  
at 10:00 AM on  
MAY 03 2016



Reference should be made to Sheet No. 1 for survey information.

UNITED STATES DEPARTMENT OF THE INTERIOR  
BUREAU OF LAND MANAGEMENT

April 29, 2016

This plat is strictly conformable to the approved field notes, and the survey, having been correctly executed in accordance with the requirements of law and the regulations of this Bureau, is hereby accepted.

For the Director

*Michael C. Hammer*

Chief Cadastral Surveyor for Nevada