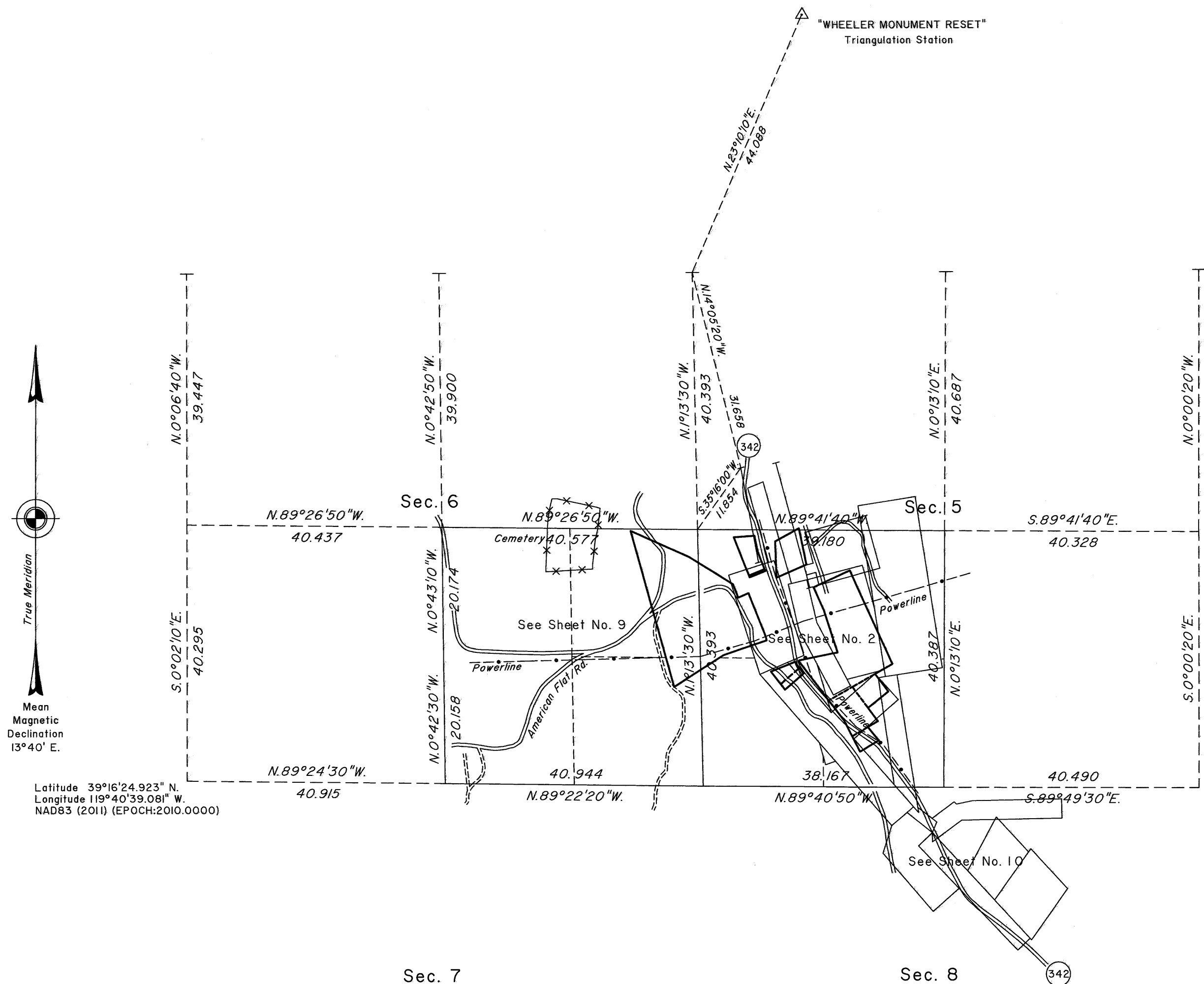


TOWNSHIP 16 NORTH, RANGE 21 EAST, OF THE MOUNT DIABLO MERIDIAN, NEVADA

DEPENDENT RESURVEY, SUBDIVISION AND METES-AND-BOUNDS SURVEY

OFFICIALLY FILED
NEVADA STATE OFFICE
at 10:00 AM on MAY 03 2016



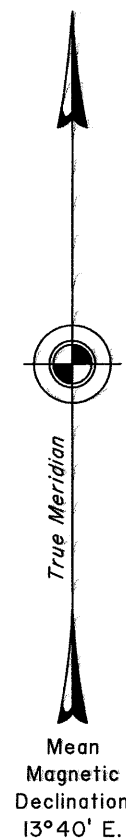
Latitude $39^{\circ}17'17.282''$ N.
Longitude $119^{\circ}38'24.416''$ W.
NAD83 (2011) (EPOCH:2010.0000)

A history of surveys is contained in the field notes.

This plat, in ten sheets, represents the dependent resurvey of a portion of the subdivisional lines and portions of certain mineral surveys designed to restore the corners in their true original locations according to the best available evidence, the subdivision of sections 5 and 6, and metes-and-bounds surveys of certain Gold Hill Townsite Lots, Township 16 North, Range 21 East, Mount Diablo Meridian, Nevada.

Except as indicated hereon, lottings and areas are as shown on the plats approved August 31, 1867 and July 27, 1880.

Survey executed by Brock R. Clifford, Supervisory Cadastral Surveyor and Brandon G. Courtright, Cadastral Surveyor, beginning August 25, 2014 and completed January 8, 2016, pursuant to Special Instructions dated August 18, 2014, for Group No. 937, Nevada



Latitude $39^{\circ}16'24.923''$ N.
Longitude $119^{\circ}40'39.081''$ W.
NAD83 (2011) (EPOCH:2010.0000)

UNITED STATES DEPARTMENT OF THE INTERIOR
BUREAU OF LAND MANAGEMENT

Reno, Nevada April 29, 2016

This plat is strictly conformable to the approved field notes, and the survey, having been correctly executed in accordance with the requirements of law and the regulations of this Bureau, is hereby accepted.

For the Director

Chief Cadastral Surveyor for Nevada

