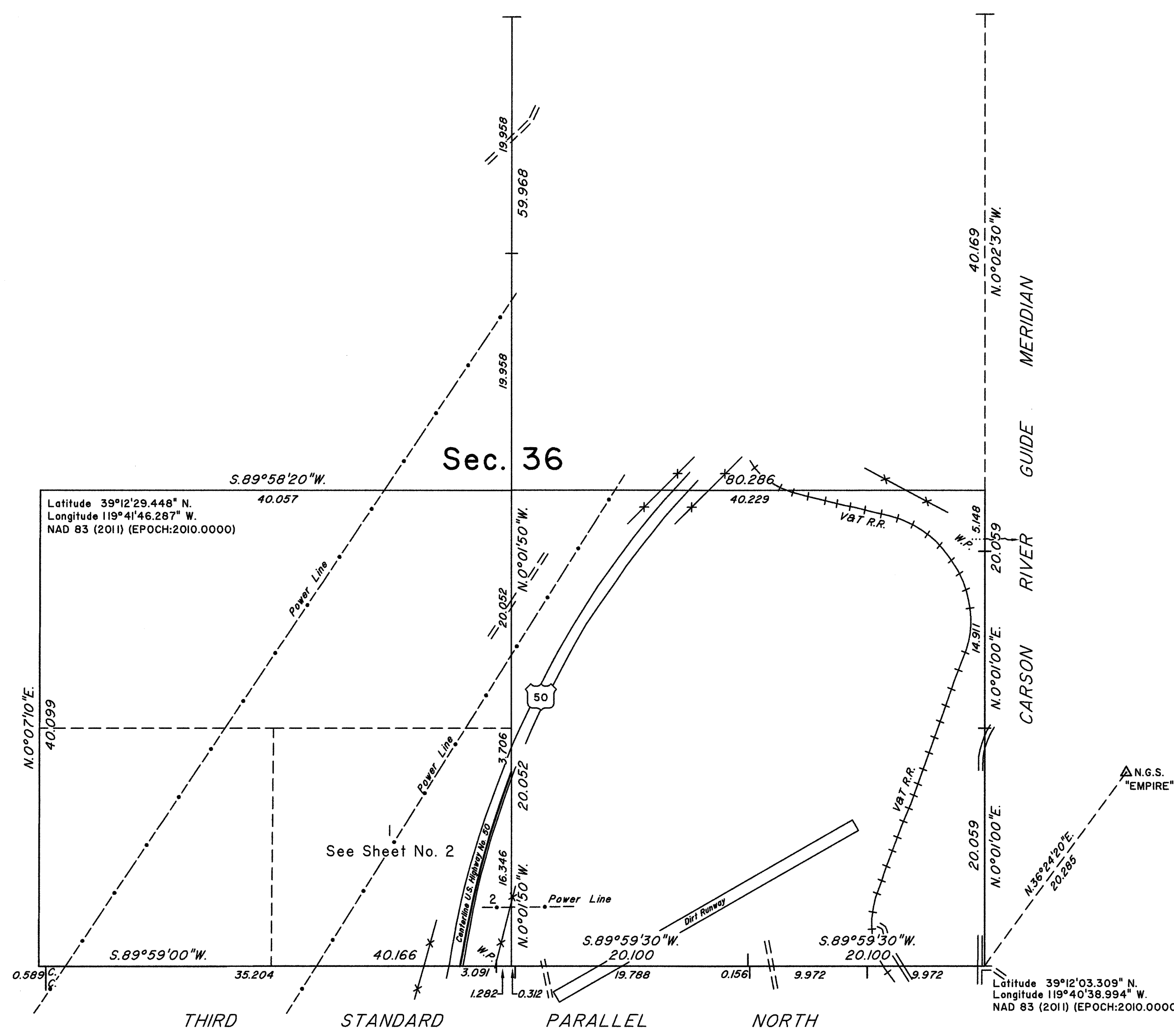
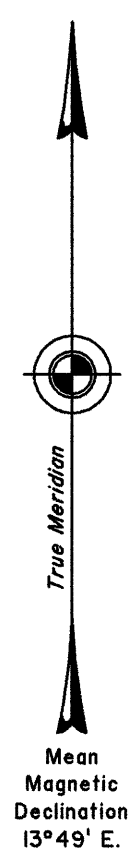


TOWNSHIP 16 NORTH, RANGE 20 EAST, OF THE MOUNT DIABLO MERIDIAN, NEVADA

DEPENDENT RESURVEY, SUBDIVISION AND METES-AND-BOUNDS SURVEY

OFFICIALLY FILED
NEVADA STATE OFFICE
at 10:00 AM on JUN 30 2014



A history of surveys is contained in the field notes.

A dependent resurvey of a portion of the east boundary (Carson River Guide Meridian) was executed concurrently under Township 16 North, Range 21 East, of this same Group.

This plat, in two sheets, represents the dependent resurvey of The Third Standard Parallel North through a portion of Range 20 East and a portion of the subdivisional lines designed to restore the corners in their true original locations according to the best available evidence, and the subdivision of section 36 and a metes-and-bounds survey of a portion of the centerline of U.S. Highway No. 50, Township 16 North, Range 20 East, Mount Diablo Meridian, Nevada.

Except as indicated hereon, the lottings and areas are as shown on the plat approved July 6, 1875.

Survey executed by Clarence D. Strickland, Cadastral Surveyor, beginning December 3, 2012, and completed March 18, 2014, pursuant to Special Instructions dated November 20, 2012, for Group No. 920, Nevada.

UNITED STATES DEPARTMENT OF THE INTERIOR
BUREAU OF LAND MANAGEMENT

Reno, Nevada June 25, 2014

This plat is strictly conformable to the approved field notes, and the survey, having been correctly executed in accordance with the requirements of law and the regulations of this Bureau, is hereby accepted.

For the Director

Chief Cadastral Surveyor for Nevada

