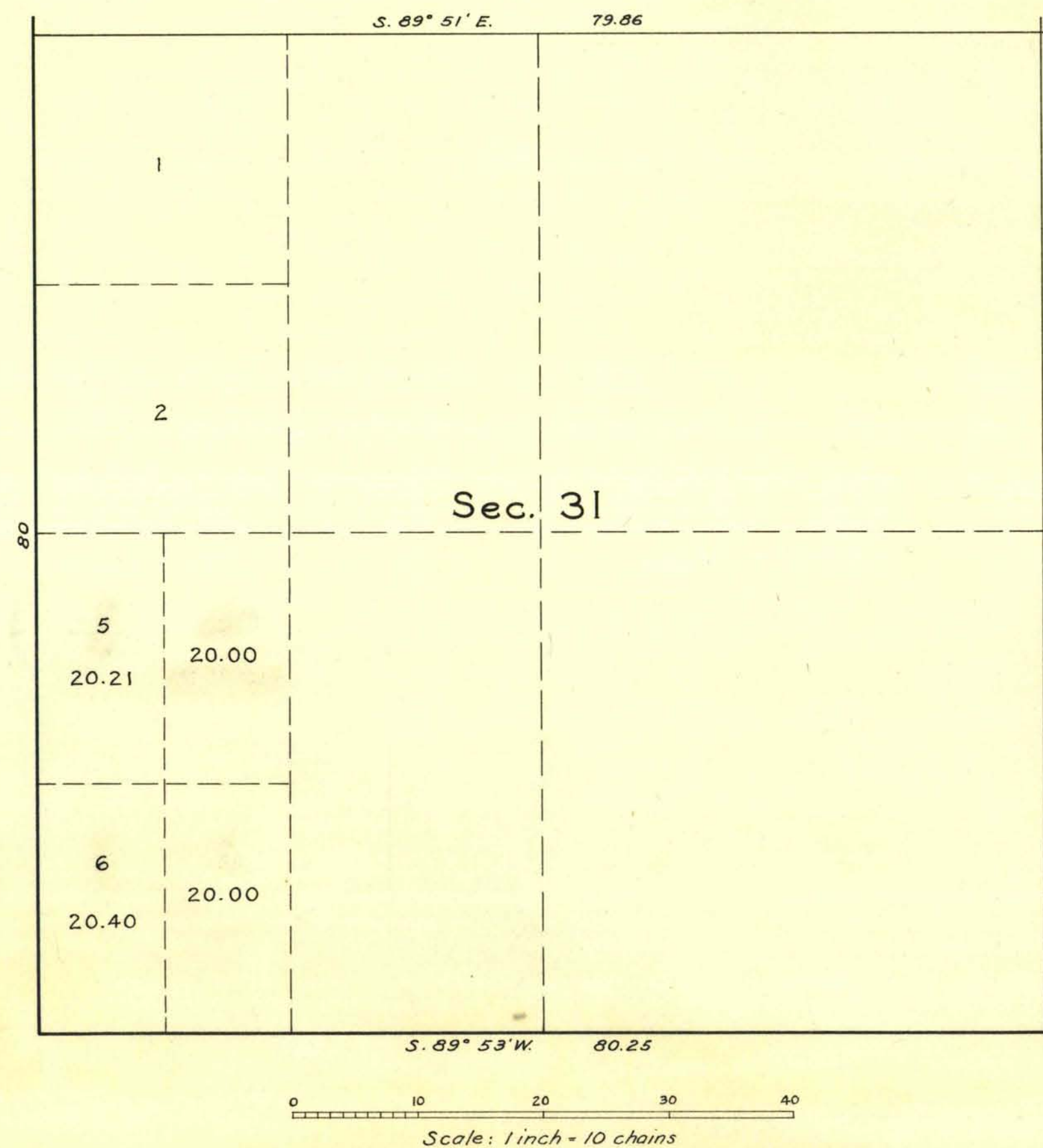


TOWNSHIP No. 15 SOUTH, RANGE No. 67 EAST, OF THE MOUNT DIABLO MERIDIAN, NEVADA
SUPPLEMENTAL PLAT OF SECTION 31



UNITED STATES DEPARTMENT OF THE INTERIOR
GENERAL LAND OFFICE

Public Survey Office, Reno, Nevada, March 9, 1943.

This supplemental plat of section 31, Township No. 15 South, Range No. 67 East, of the Mount Diablo Meridian, Nevada, based upon the plat approved June 13, 1881, showing a subdivision of original lots 3 and 4, to accommodate entry Carson City 021250, prepared in accordance with instructions contained in the Commissioner's memorandum "N" dated March 3, 1943, is hereby approved.

Harry L. Palmer
Office Cadastral Engineer

Washington, D.C., March 18, 1943

The amended lottings represented by this supplemental plat having been correctly made in accordance with the regulations of this office, the plat is hereby accepted.

Joel David Wolfson
Assistant Commissioner