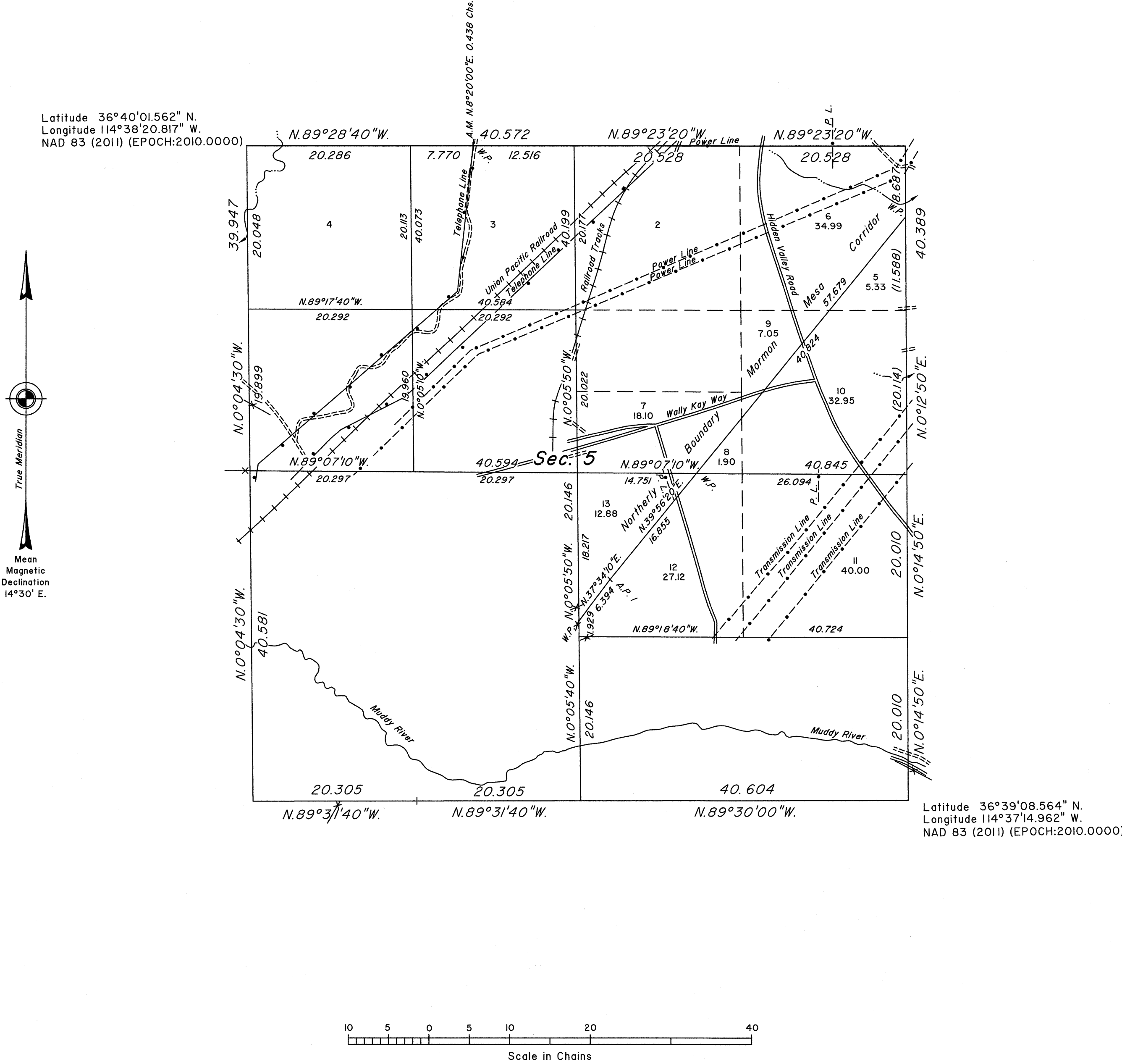


TOWNSHIP 15 SOUTH, RANGE 66 EAST, OF THE MOUNT DIABLO MERIDIAN, NEVADA
DEPENDENT RESURVEY, CORRECTIVE DEPENDENT RESURVEY, SUBDIVISION AND METES-AND-BOUNDS SURVEY



A history of surveys is contained in the field notes.

This plat represents the dependent resurvey and the corrective dependent resurvey of a portion of the north boundary and the dependent resurvey of a portion of the subdivisional lines designed to restore the corners in their true original locations according to the best available evidence, the subdivision of section 5 and a metes-and-bounds survey in section 5, Township 15 South, Range 66 East, Mount Diablo Meridian, Nevada.

Except as indicated hereon, the lottings and areas, are as shown on the plat approved June 13, 1881.

Survey executed by Joseph J. Johnson, Cadastral Surveyor, beginning October 4, 2015 and completed March 14, 2017, pursuant to Special Instructions dated August 27, 2015, and Supplemental Special Instructions dated November 21, 2016, for Group No. 955, Nevada.

UNITED STATES DEPARTMENT OF THE INTERIOR
BUREAU OF LAND MANAGEMENT
Reno, Nevada March 21, 2017

This plat is strictly conformable to the approved field notes, and the survey, having been correctly executed in accordance with the requirements of law and the regulations of this Bureau, is hereby accepted.

For the Director

Muhammad O. Hammami

Chief Cadastral Surveyor for Nevada