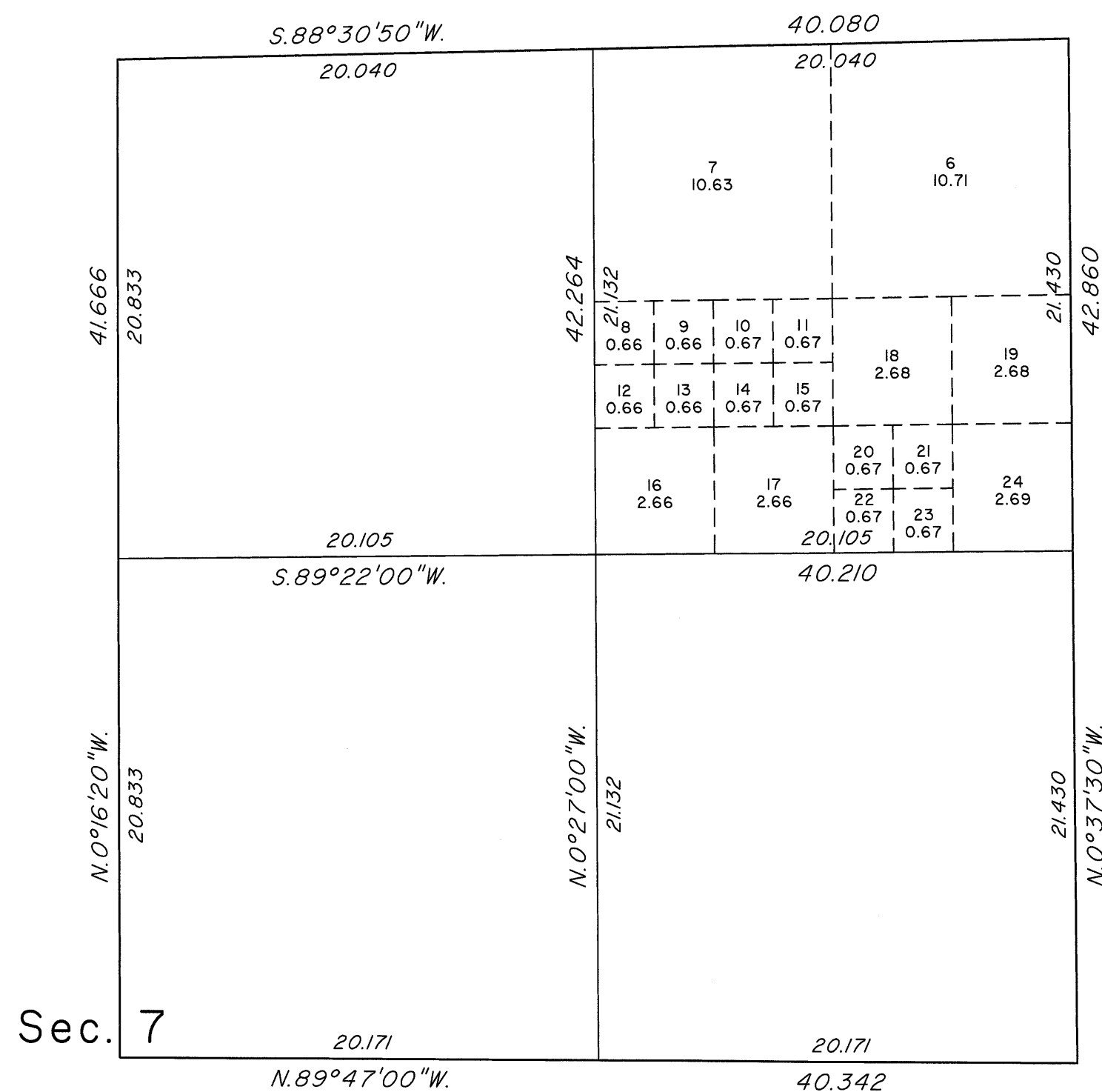


TOWNSHIP 15 SOUTH, RANGE 66 EAST, OF THE MOUNT DIABLO MERIDIAN, NEVADA  
SUPPLEMENTAL PLAT OF THE NE 1/4 SECTION 7



This plat showing a subdivision of former lot 5, sec. 7, Township 15 South, Range 66 East, Mount Diablo Meridian, Nevada, based upon the plat approved June 13, 1881, and the plat accepted July 5, 1995, is prepared to accommodate a direct land sale under provisions of the Federal Land Policy and Management Act.

Plat prepared by Clay W. Morrow, Cartographic Technician, beginning February 14, 2012 and completed February 15, 2012, pursuant to special instructions dated February 13, 2012, and assignment instructions dated February 14, 2012, for Group No. 913, Nevada.

Except as indicated hereon, the lotting and areas are shown on plat approved June 13, 1881, and the plat accepted July 5, 1995.

UNITED STATES DEPARTMENT OF THE INTERIOR  
BUREAU OF LAND MANAGEMENT

Reno, Nevada February 17, 2012

This plat, showing amended lottings, is based upon the official records and, having been correctly prepared in accordance with the requirements of the law and the regulations of this Bureau, is hereby accepted.

For the Director

*David D. Moran*

Chief Cadastral Surveyor for Nevada

